



NS0-509^{Q&As}

NetApp Certified Implementation Engineer - SAN - ONTAP

Pass NetApp NS0-509 Exam with 100% Guarantee

Free Download Real Questions & Answers **PDF** and **VCE** file from:

<https://www.geekcert.com/ns0-509.html>

100% Passing Guarantee
100% Money Back Assurance

Following Questions and Answers are all new published by NetApp
Official Exam Center

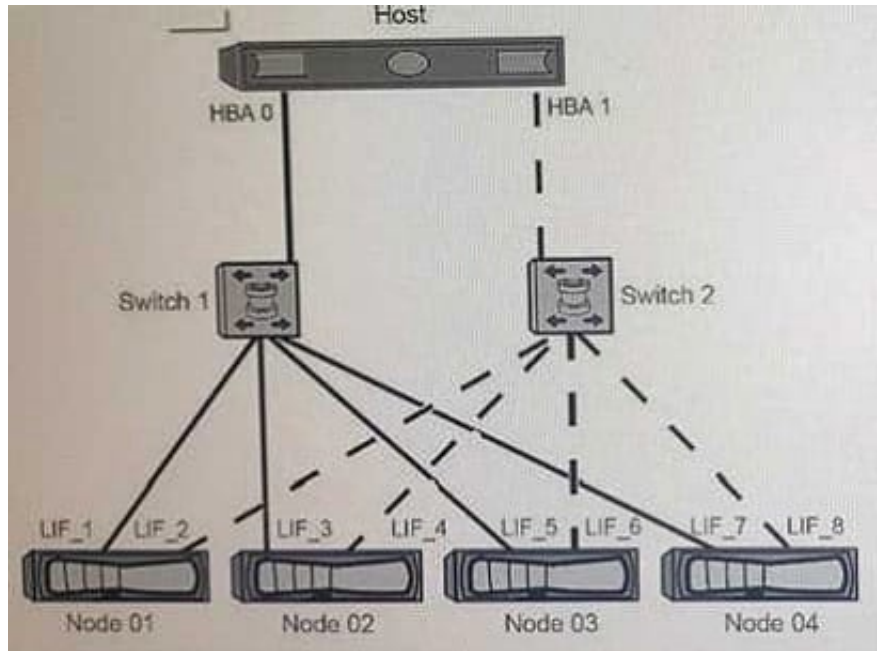
- ⚙️ **Instant Download** After Purchase
- ⚙️ **100% Money Back** Guarantee
- ⚙️ **365 Days** Free Update
- ⚙️ **800,000+** Satisfied Customers





QUESTION 1

Exhibit.



The host in the exhibit is connected to a 4-node ONTAP SAN using dual-fabric implementation. LUNs have been mapped LUN through all available UFs on nil (our nodes. Switch 2 is powered off for high-availability testing.

How many paths per LUN would you expect the host to see in this scenario?

- A. 2
- B. 6
- C. 4
- D. 8

Correct Answer: C

QUESTION 2

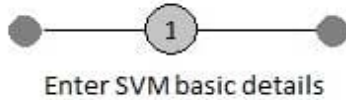
Click the Exhibit button.



Question

Exhibit

Storage Virtual Machine (SVM) Setup



SVM Details

? Specify a unique name and the data protocols for the SVM

SVM Name:

? IPspace:

 v

? Data Protocols:

☐ CIFS ☐ NFS ☐ iSCSI ☐ FC/FCoE

? Default language:

 v

The language of the SVM specifies the default language encoding setting for the SVM and its volumes. Using a setting that incorporates UTF-8 character encoding is recommended.

? Security Style:

 v

Root Aggregate:

 v

DNS Configuration

Specify the DNS domain and name servers. DNS details are required to configure the CIFS protocol.

? Search Domains:

rtp.openenlab.netapp.com

? Name Servers:

10.193.0.250.10.192.0.250.10.193.0.251

Referring to the exhibit, which two elements are required for NVMe host access with ONTAP 9.5 and using supported AFF nodes? (Choose two.)

- A. You need 16 Gb FC HBAs installed in the AFF nodes.
- B. You must have the license installed for NVMe support in the cluster.
- C. You must have the license installed for FC support in the cluster.
- D. You need 32 Gb FC HBAs installed in the AFF nodes.

Correct Answer: CD



QUESTION 3

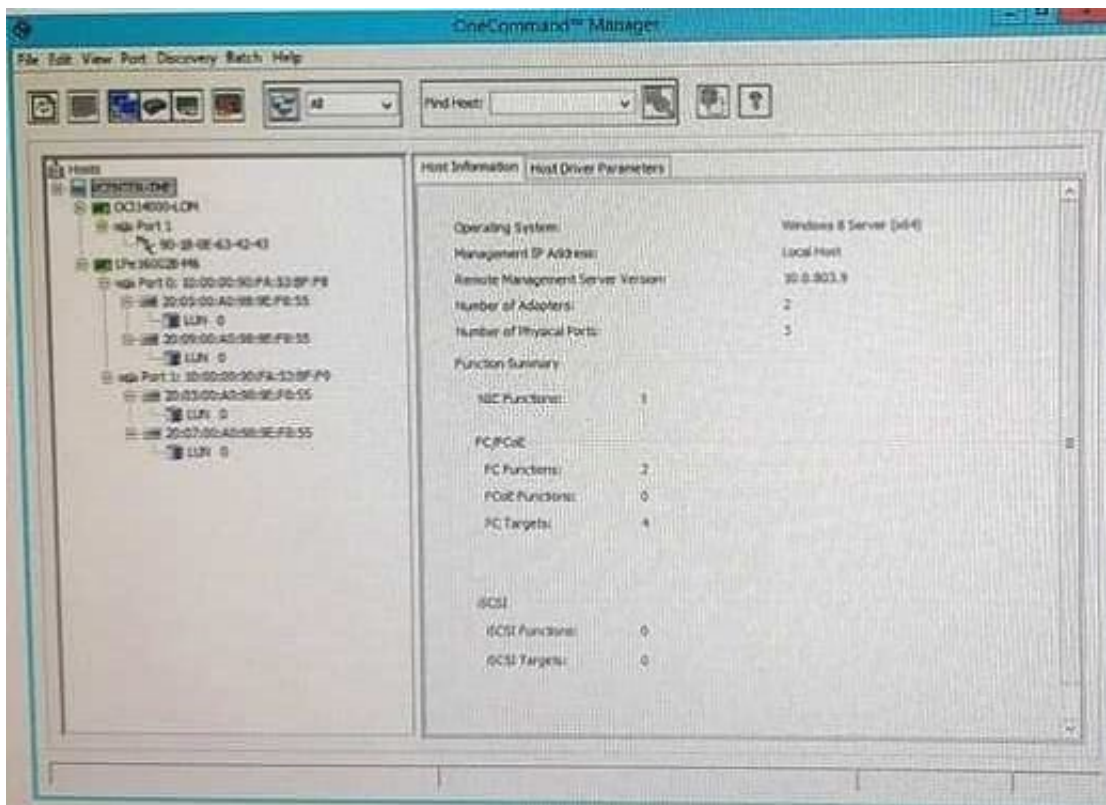
You want to access and mount a Linux LUN using only iSCSI. In the past, the LUN has been accessed using FC. What must you do to accomplish this task?

- A. Change the LUN protocol type to (SCSI).
- B. Create a new iSCSI igroup. and change the LUN mapping from the original to the new igroup.
- C. Create a new iSCSI Igroup and map the LUN to both the new and existing FC igroup.
- D. Add an iSCSI protocol type to the existing igroup so that the LUN can be accessed by both FC and iSCSI hosts.

Correct Answer: B

QUESTION 4

Exhibit.



Referring to the exhibit, what is the total number of target LUNs that are being accessed?

- A. 4
- B. 1
- C. 2



D. 8

Correct Answer: B

QUESTION 5

A4-node ONTAP FAS9000 cluster was used to serve I/O from six RedHat 7.3 servers. The servers were configured with maximum, queue depth.

For production purposes, an additional 60 similarly configured hosts were added to the environment. Later, the hosts started reporting random QFull errors, and the aggregated performance degraded. Which two solutions would alleviate the QFull errors and performance problems? (Choose two.)

- A. Remove Selective LUN Mapping (SIM) from the 4-node FAS9000 cluster.
- B. Download the latest FC HBA driver, firmware, and BIOS, and deploy them on the hosts.
- C. Configure and use additional FC target HBAs in the FAS9000 cluster.
- D. Reduce FC HBA queue depth on the hosts.

Correct Answer: CD

[Latest NS0-509 Dumps](#)

[NS0-509 Practice Test](#)

[NS0-509 Braindumps](#)