



# NS0-520<sup>Q&As</sup>

NetApp Certified Implementation Engineer - SAN ONTAP

## Pass NetApp NS0-520 Exam with 100% Guarantee

Free Download Real Questions & Answers **PDF** and **VCE** file from:

<https://www.geekcert.com/ns0-520.html>

100% Passing Guarantee  
100% Money Back Assurance

Following Questions and Answers are all new published by NetApp  
Official Exam Center

-  **Instant Download** After Purchase
-  **100% Money Back** Guarantee
-  **365 Days** Free Update
-  **800,000+** Satisfied Customers





### QUESTION 1

A company has 20 ESX hosts. Ten of the hosts are connected using FC, and the rest are connected over iSCSI. The FC host HBA queue depth is set to 32, and the iSCSI LUN queue depth is set to 64. The FC hosts are now experiencing random connectivity issues.

In this scenario, what would be the reason for the disconnects?

- A. The FC host has a lower queue depth.
- B. According to the IMT, unsupported HBA firmware is in use.
- C. All of the hosts are part of the same cluster.
- D. The queue depth is not consistent across the cluster.

Correct Answer: A

### QUESTION 2

Question		Exhibit					
<code>cl1::&gt; ucadmin show</code>							
Node	Adapter	Current Mode	Current Type	Pending Mode	Pending Type	Admin Status	
01a	0e	cna	target	-	-	online	
01a	0f	cna	target	-	-	online	
01a	0g	cna	target	-	fc	online	
01a	0h	cna	target	-	fc	online	
01b	0e	cna	target	-	-	online	
01b	0f	cna	target	-	-	online	
01b	0g	fc	target	-	-	online	
01b	0h	fc	target	-	-	online	

Referring to the exhibit, which two pairs of ports are currently configurable as FC SAN LIFs? (Choose two.)

- A. 01b, 0h
- B. 01a, 0g
- C. 01a, 0h
- D. 01b, 0g

Correct Answer: D

### QUESTION 3

An administrator reviews the Upgrade Advisor before performing an upgrade of their ONTAP cluster. What information



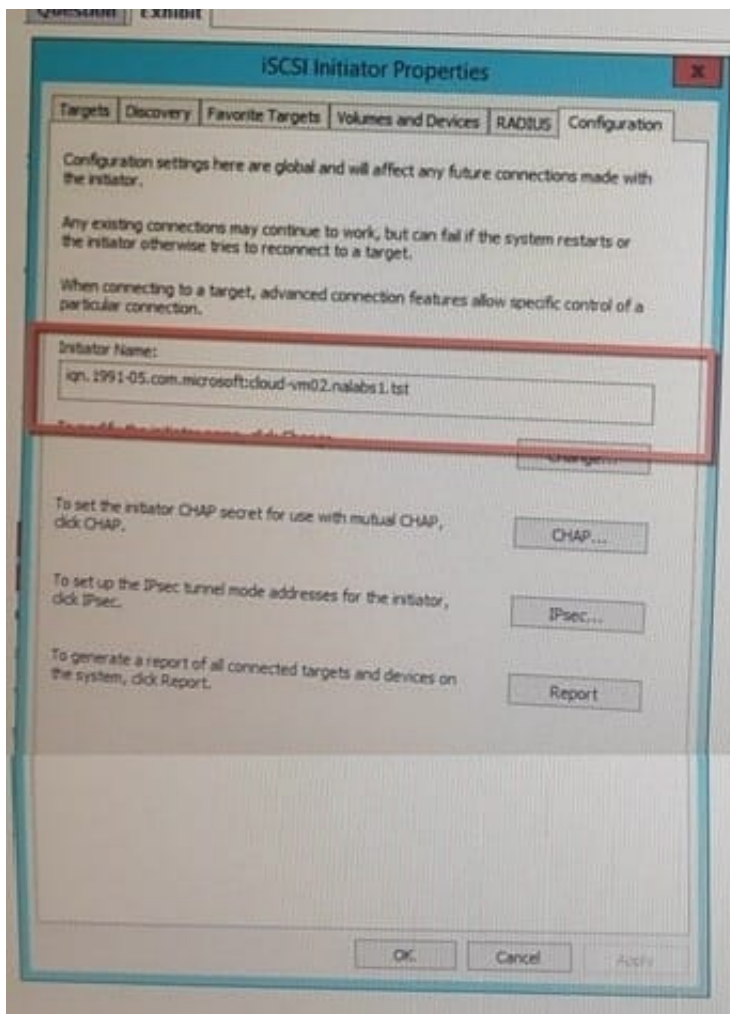
is detailed in the report? (Choose two.)

- A. pre-upgrade checks
- B. performance metrics
- C. risk exposures
- D. cluster interconnect checks

Correct Answer: AD

#### QUESTION 4

Exhibit.



You want to map a LUN to a server.

To which SAN object is the highlighted value in the exhibit added?

- A. LUN



- B. fabric zone
- C. FlexClone
- D. igroup

Correct Answer: D

### QUESTION 5

Exhibit.

Name	Container Path	Space Reservation	Available Size	Total Size	% Used
test_lun	/vol/vol_c01_01	Enabled	100.01 GB	100.01 GB	0.0%
lun_sanluns01_prod01	/vol/vol_sanluns01dev_02	Enabled	10 GB	10 GB	0.0%
lun_sanluns1_prod_01	/vol/vol_sanluns01prod_03	Enabled	100.01 GB	100.01 GB	0.0%
lun_sanluns1_prod_02	/vol/vol_sanluns01prod_03	Enabled	200.03 GB	200.03 GB	0.0%
lun_sanluns1_prod_03	/vol/vol_sanluns01prod_03	Disabled	300.04 GB	300.04 GB	0.0%
lun_sanluns1_prod_04	/vol/vol_sanluns01prod_03	Disabled	2 TB	2 TB	0.0%

Referring to the exhibit, what is the total amount of space that is guaranteed for the LUNs in the /vol/vol\_sanlunsprod\_03 volume?

- A. 0 GB
- B. 300 GB
- C. 600 GB
- D. 2600 GB

Correct Answer: A

[Latest NS0-520 Dumps](#)

[NS0-520 Practice Test](#)

[NS0-520 Study Guide](#)