



# NS0-520<sup>Q&As</sup>

NetApp Certified Implementation Engineer - SAN ONTAP

## Pass NetApp NS0-520 Exam with 100% Guarantee

Free Download Real Questions & Answers **PDF** and **VCE** file from:

<https://www.geekcert.com/ns0-520.html>

100% Passing Guarantee  
100% Money Back Assurance

Following Questions and Answers are all new published by NetApp  
Official Exam Center

- ⚙️ **Instant Download** After Purchase
- ⚙️ **100% Money Back** Guarantee
- ⚙️ **365 Days** Free Update
- ⚙️ **800,000+** Satisfied Customers





### QUESTION 1

In an NVMe/FC environment, the host cannot discover the namespace on the AFF system. Referring to the exhibit, what is the problem?

```
# cat /etc/nvme/hostnqn
nqn.2014-08.org.nvmexpress:uuid:75953f3b-77fe-4e03-bf3c-09d5a156fbcd

*> vserver nvme subsystem host show -vserver vs_nvme_10
Vserver Subsystem Host NQN
-----
rhel_141_nvme_ss_10_0
nqn.2014-08.org.nvmexpress:uuid:3ca559e1-5588-4fc4-b7d6-5ccfb0b9f054
```

- A. The host MPIO drivers are not installed
- B. NVMe is not supported on the FC adapter
- C. The NQN is not correct
- D. The NVMe service is not running on the SVM

Correct Answer: C

We would not be able to run that command if NVMe is not enabled NVMe is supported on the same SVM along with FC protocol The multipath tool on NVMe is called ANA NQN needs to be correctly declared on the subsystem to map the new NVMe resources

### QUESTION 2

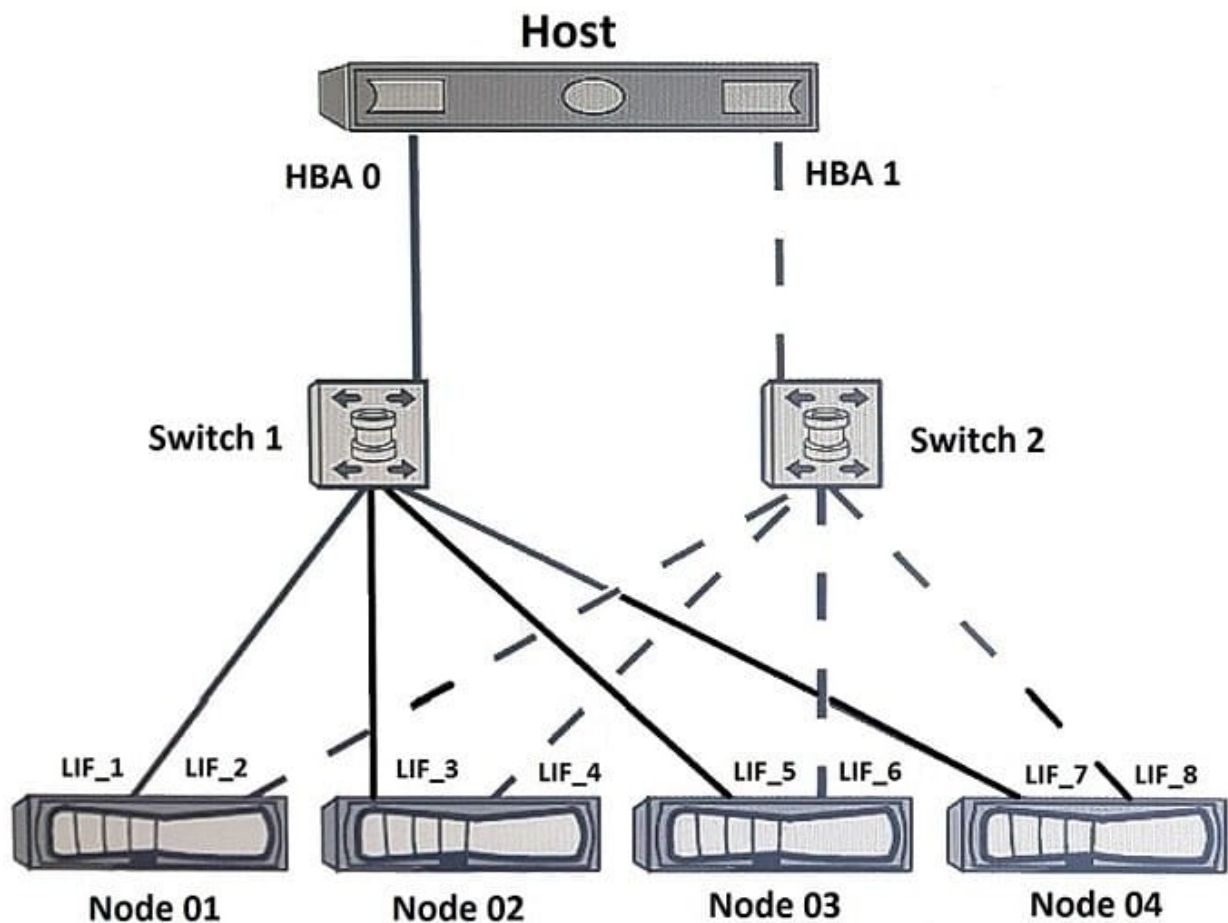
You use iSCSI to present a LUN to a newly installed Windows 2016 Server. You have created the volume and LUN on the NetApp cluster. When you perform a hardware rescan on the Windows host, you cannot see the newly presented storage.

What are three reasons for this problem? (Choose three.)

- A. The protocol has not been enabled on the NetApp cluster.
- B. You need to add the IQN of the Windows host to the newly created LUN.
- C. The IQN of the Windows host is not included in the igroup for the new LUN.
- D. The wrong igroup has been associated with the new LUN.
- E. The volume has not been enabled for iSCSI access.

Correct Answer: ABD

### QUESTION 3



You configured a SAN host with a 4-node ONTAP 9.5 cluster that uses default settings. All paths are available from the host to the four nodes. You have a requirement to see only two paths to each LUN. One path is optimized and the other is non-optimized.

In this scenario, which NetApp SAN feature supports this requirement?

- A. portsets
- B. SLM
- C. VLANs
- D. igroups

Correct Answer: C

#### QUESTION 4

An administrator is configuring a SAN-only cluster. The data room that houses four AFF A220 controllers is small and not able to house the DS224C shelves. The administrator proposes to rack the shelves in a separate room that is 40



meters away from the controllers.

In this situation, how would you properly cable the controllers to the shelves?

- A. Use multimode passive optical cables.
- B. Use multimode active copper cables.
- C. Use multimode active optical cables.
- D. Use multimode passive copper cables.

Correct Answer: C

---

#### QUESTION 5

You are deploying an 8-node FAS8200 ONTAP cluster and attaching to an existing FC fabric.

Which two ONTAP features would be used to restrict or limit the available paths seen from the host? (Choose two.)

- A. port sets
- B. igroup
- C. VIAN
- D. Selective IUN Map

Correct Answer: AD

[Latest NS0-520 Dumps](#)

[NS0-520 PDF Dumps](#)

[NS0-520 Practice Test](#)