



# NS0-527<sup>Q&As</sup>

NetApp Certified Implementation Engineer - Data Protect

## Pass NetApp NS0-527 Exam with 100% Guarantee

Free Download Real Questions & Answers **PDF** and **VCE** file from:

<https://www.geekcert.com/ns0-527.html>

100% Passing Guarantee  
100% Money Back Assurance

Following Questions and Answers are all new published by NetApp  
Official Exam Center

- ⚙️ **Instant Download** After Purchase
- ⚙️ **100% Money Back** Guarantee
- ⚙️ **365 Days** Free Update
- ⚙️ **800,000+** Satisfied Customers





### QUESTION 1

You are asked to implement a DR solution to protect employee home directories on the primary cluster. The solution should provide an RPO of one hour, disaster recovery and archiving configured on the same destination volume of the DR cluster. Your solution should also reduce the amount of secondary storage requirements and use lower network traffic on the WAN links.

In this scenario, which NetApp replication technology satisfies these requirements?

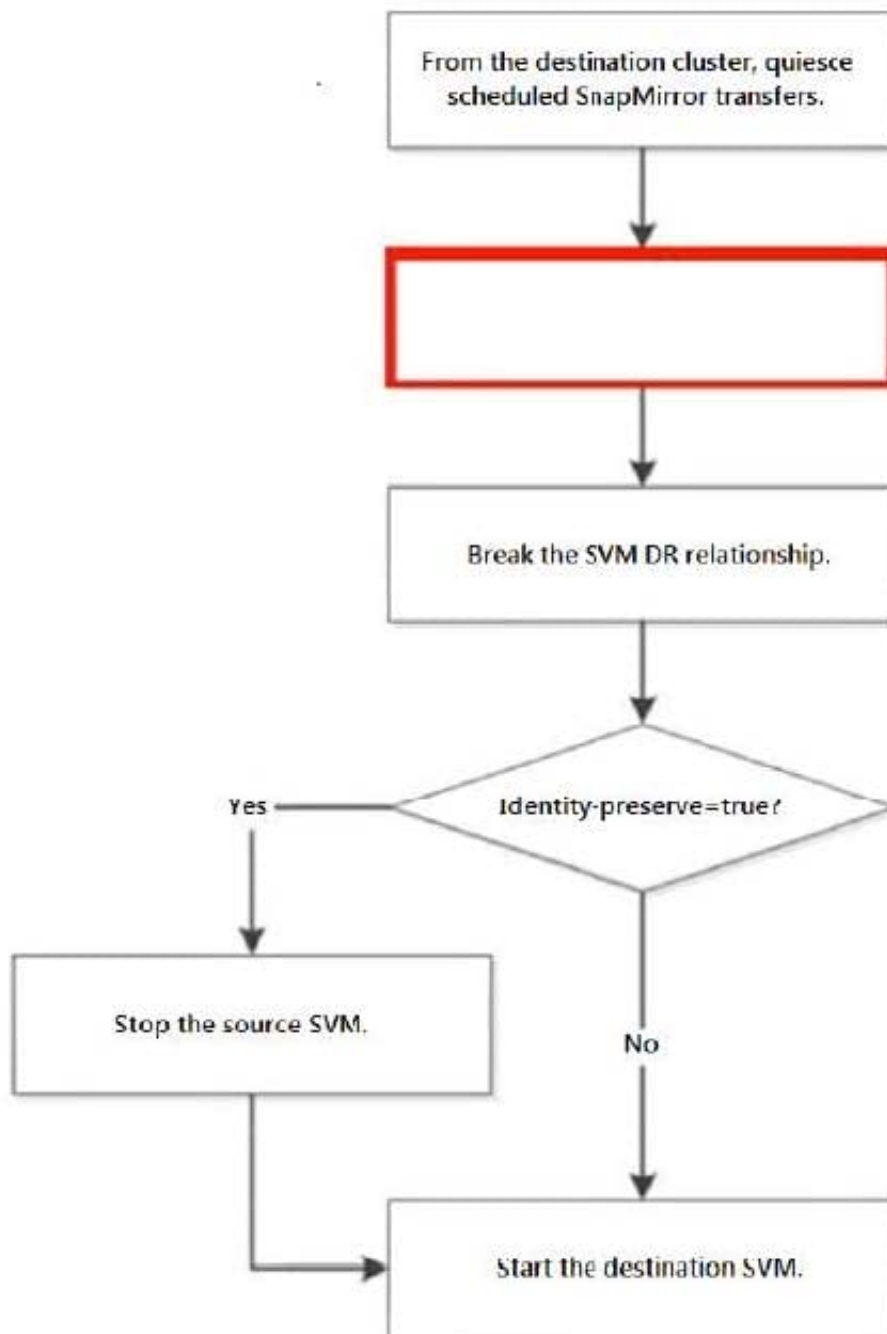
- A. SnapMirror-Sync
- B. SyncMirror
- C. MetroCluster
- D. SnapMirror

Correct Answer: D

---

### QUESTION 2

Click the Exhibit button.



In an ONTAP environment, an SVM-DR relationship exists between your AFF A220 cluster and your FAS2720 cluster, with identity preserve enabled. You are asked to test the disaster recovery workflow in an upcoming maintenance window. Referring to the exhibit, which step should be performed next to test the recovery workflow?

- A. Delete the SVM-DR relationship.
- B. Pause any ongoing transfers.
- C. Abort any ongoing transfers.
- D. Update any ongoing transfers.

Correct Answer: C



### QUESTION 3

Click the Exhibit button.

<input type="checkbox"/>	Name	Storage VM	Status	Capacity (available   total)	Protection
	mworthen_src1_lun	mworthen_src1	Online	<div><div></div></div> 27.16 MB   3.03 GB	
<div><div><div>STATUS  Online</div><div>EXPORT POLICY default</div><div>STYLE FlexVol</div><div>SPACE RESERVATION Thin Provisioned</div></div><div><div>TYPE Read Write</div><div>QOS POLICY GROUP -</div></div><div><div>STORAGE EFFICIENCY Enabled</div></div><div><div>SNAPSHOT COPIES (LOCAL) STATUS  Unprotected</div><div>SNAPSHOT POLICY none</div></div><div><div>SNAPMIRROR (LOCAL OR REMOTE) STATUS  Unprotected</div></div></div>					
	my_vol	svm_argn	Online	<div><div></div></div> 474.57 MB   500 MB	
<div><div><div>STATUS  Online</div><div>EXPORT POLICY ▼ default</div><div>STYLE FlexVol</div><div>SPACE RESERVATION Thin Provisioned</div></div><div><div>TYPE Read Write</div><div>QOS POLICY GROUP pg10</div></div><div><div>STORAGE EFFICIENCY Enabled</div></div><div><div>SNAPSHOT COPIES (LOCAL) STATUS  Protected</div><div>SNAPSHOT POLICY default</div></div><div><div>SNAPMIRROR (LOCAL OR REMOTE) STATUS  Unprotected</div></div></div>					
	new_work_vol	AFF_SAN_DEFAULT_SVM	Online	<div><div></div></div> 3.32 GB   25.77 GB	
<div><div><div>STATUS  Online</div><div>EXPORT POLICY default</div><div>STYLE FlexVol</div><div>SPACE RESERVATION Thin Provisioned</div></div><div><div>TYPE Read Write</div><div>QOS POLICY GROUP -</div></div><div><div>STORAGE EFFICIENCY Enabled</div></div><div><div>SNAPSHOT COPIES (LOCAL) STATUS  Unprotected</div><div>SNAPSHOT POLICY none</div></div><div><div>SNAPMIRROR (LOCAL OR REMOTE) STATUS  Unprotected</div></div></div>					
	project_a	svm_fabricpool	Online	<div><div></div></div> 3.32 GB   25.77 GB	
<div><div><div>STATUS  Online</div><div>EXPORT POLICY ▼ fabricpool</div><div>STYLE FlexVol</div><div>SPACE RESERVATION Thin Provisioned</div></div><div><div>TYPE Read Write</div><div>QOS POLICY GROUP -</div></div><div><div>STORAGE EFFICIENCY Enabled</div></div><div><div>SNAPSHOT COPIES (LOCAL) STATUS  Protected</div><div>SNAPSHOT POLICY default</div></div><div><div>SNAPMIRROR (LOCAL OR REMOTE) PROJECTED ON CLUSTER aff PROJECTED ON VOLUME project_a_dest STATUS  Mirrored PROJECTION POLICY Asynchronous</div></div></div>					

Referring to the exhibit, which volume has the highest level of protection assigned to it?

- A. project\_a
- B. mworthen\_src1\_lun



C. my\_vol

D. new\_work\_vol

Correct Answer: B

#### QUESTION 4

A customer wants to assign a user to a build-in SnapCenter RBAC Role that will allow them to review and start existing SnapMirror processes only. In this scenario, which Role will allow the customer to accomplish this task?

A. App Backup and Clone Admin

B. Infrastructure Admin

C. Backup and Clone Viewer

D. SnapCenter Admin

Correct Answer: D

#### QUESTION 5

You have set up a SnapMirror relationship between two SVMs for data protection. The data in the source volume is unavailable due to an event related to a virus infection leading to data corruption. In this scenario, which three actions are required to activate the SnapMirror destination volume and provide data access to the users? (Choose three.)

A. Perform a SnapMirror quiesce operation.

B. Disable the source volume by taking it offline.

C. Configure the destination volume for data access.

D. Verify the status of the source and destination volumes.

E. Perform a SnapMirror break operation.

Correct Answer: CDE

[NS0-527 PDF Dumps](#)

[NS0-527 Practice Test](#)

[NS0-527 Braindumps](#)