



NSE4_FGT-6.4^{Q&As}

Fortinet NSE 4 - FortiOS 6.4

Pass Fortinet NSE4_FGT-6.4 Exam with 100% Guarantee

Free Download Real Questions & Answers **PDF** and **VCE** file from:

https://www.geekcert.com/nse4_fgt-6-4.html

100% Passing Guarantee
100% Money Back Assurance

Following Questions and Answers are all new published by Fortinet Official Exam Center

-  **Instant Download** After Purchase
-  **100% Money Back** Guarantee
-  **365 Days** Free Update
-  **800,000+** Satisfied Customers





QUESTION 1

Which two statements are true about the Security Fabric rating? (Choose two.)

- A. It provides executive summaries of the four largest areas of security focus.
- B. Many of the security issues can be fixed immediately by clicking Apply where available.
- C. The Security Fabric rating must be run on the root FortiGate device in the Security Fabric.
- D. The Security Fabric rating is a free service that comes bundled with all FortiGate devices.

Correct Answer: BC

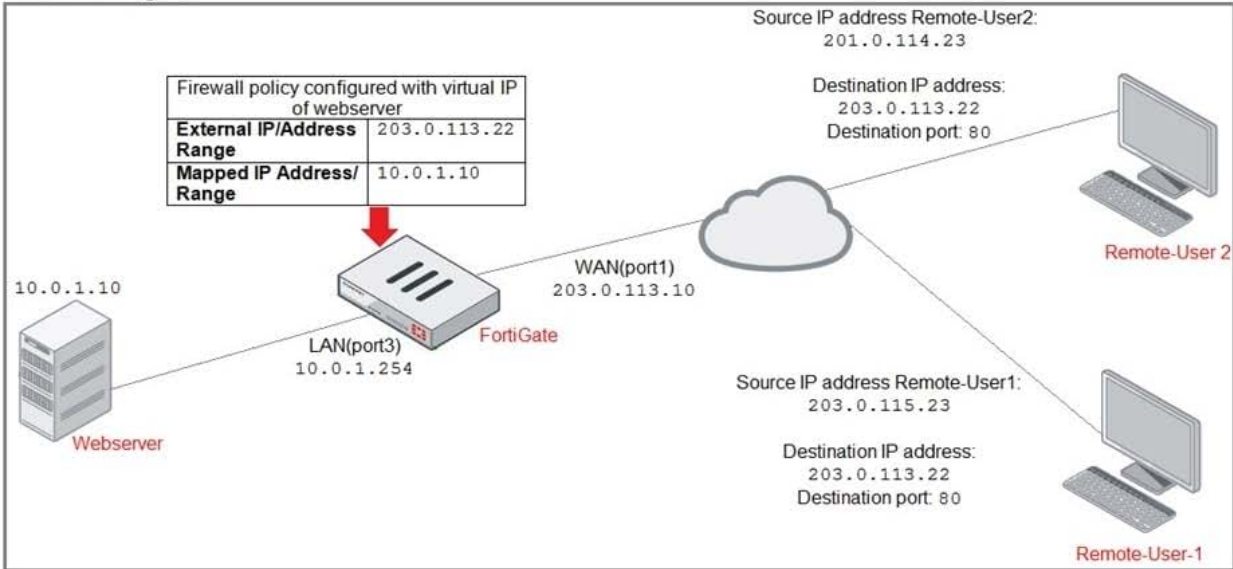
FortiGate_Security_6.4_Study_Guide-Online. page 89

QUESTION 2

Refer to the exhibit.



Network diagram

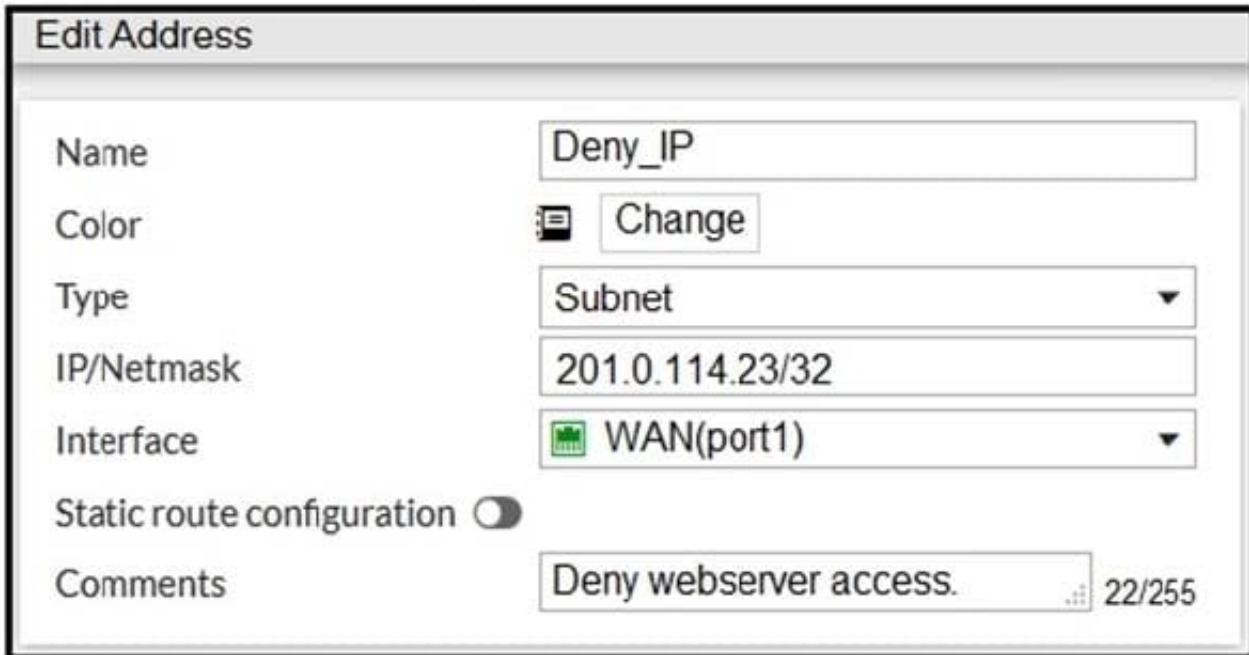



ID	Name	Source	Destination	Schedule	Service	Action
WAN(port1) → LAN(port3)						
2	Deny	Deny_IP	all	always	ALL	DENY
3	Allow_access	all	Web_server	always	ALL	ACCEPT



Firewall address object

Edit Address

Name	<input type="text" value="Deny_IP"/>
Color	 <input type="button" value="Change"/>
Type	<input type="text" value="Subnet"/>
IP/Netmask	<input type="text" value="201.0.114.23/32"/>
Interface	 <input type="text" value="WAN(port1)"/>
Static route configuration	<input type="checkbox"/>
Comments	<input type="text" value="Deny webserver access."/> 22/255

The exhibit contains a network diagram, firewall policies, and a firewall address object configuration.

An administrator created a Deny policy with default settings to deny Webserver access for Remote-user2. Remote-user2 is still able to access Webserver.

Which two changes can the administrator make to deny Webserver access for Remote-User2? (Choose two.)

- A. Disable match-vip in the Deny policy.
- B. Set the Destination address as Deny_IP in the Allow-access policy.
- C. Enable match vip in the Deny policy.
- D. Set the Destination address as Web_server in the Deny policy.

Correct Answer: CD

QUESTION 3

Which two statements are true about collector agent advanced mode? (Choose two.)

- A. Advanced mode uses Windows convention--NetBios: Domain\Username.
- B. FortiGate can be configured as an LDAP client and group filters can be configured on FortiGate
- C. Advanced mode supports nested or inherited groups
- D. Security profiles can be applied only to user groups, not individual users.



Correct Answer: BC

QUESTION 4

An administrator has configured a strict RPF check on FortiGate. Which statement is true about the strict RPF check?

- A. The strict RPF check is run on the first sent and reply packet of any new session.
- B. Strict RPF checks the best route back to the source using the incoming interface.
- C. Strict RPF checks only for the existence of at least one active route back to the source using the incoming interface.
- D. Strict RPF allows packets back to sources with all active routes.

Correct Answer: B

QUESTION 5

Which three methods are used by the collector agent for AD polling? (Choose three.)

- A. FortiGate polling
- B. NetAPI
- C. Novell API
- D. WMI
- E. WinSecLog

Correct Answer: BDE

Reference: <https://kb.fortinet.com/kb/documentLink.do?externalID=FD47732>

[NSE4_FGT-6.4 PDF Dumps](#) [NSE4_FGT-6.4 VCE Dumps](#) [NSE4_FGT-6.4 Braindumps](#)