



NSE4_FGT-7.0^{Q&As}

Fortinet NSE 4 - FortiOS 7.0

Pass Fortinet NSE4_FGT-7.0 Exam with 100% Guarantee

Free Download Real Questions & Answers **PDF** and **VCE** file from:

https://www.geekcert.com/nse4_fgt-7-0.html

100% Passing Guarantee
100% Money Back Assurance

Following Questions and Answers are all new published by Fortinet
Official Exam Center

- ⚙️ **Instant Download** After Purchase
- ⚙️ **100% Money Back** Guarantee
- ⚙️ **365 Days** Free Update
- ⚙️ **800,000+** Satisfied Customers





QUESTION 1

In consolidated firewall policies, IPv4 and IPv6 policies are combined in a single consolidated policy. Instead of separate policies. Which three statements are true about consolidated IPv4 and IPv6 policy configuration? (Choose three.)

- A. The IP version of the sources and destinations in a firewall policy must be different.
- B. The Incoming Interface, Outgoing Interface, Schedule, and Service fields can be shared with both IPv4 and IPv6.
- C. The policy table in the GUI can be filtered to display policies with IPv4, IPv6 or IPv4 and IPv6 sources and destinations.
- D. The IP version of the sources and destinations in a policy must match.
- E. The policy table in the GUI will be consolidated to display policies with IPv4 and IPv6 sources and destinations.

Correct Answer: BDE

QUESTION 2

An administrator has configured the following settings: What are the two results of this configuration? (Choose two.)

```
config system settings
set ses-denied-traffic enable
end
config system global
set block-session-timer 30
end
```

- A. Device detection on all interfaces is enforced for 30 minutes.
- B. Denied users are blocked for 30 minutes.
- C. A session for denied traffic is created.
- D. The number of logs generated by denied traffic is reduced.

Correct Answer: CD

Reference: <https://kb.fortinet.com/kb/documentLink.do?externalID=FD46328>

QUESTION 3

A FortiGate is operating in NAT mode and configured with two virtual LAN (VLAN) sub interfaces added to the physical interface.

Which statements about the VLAN sub interfaces can have the same VLAN ID, only if they have IP addresses in different subnets.



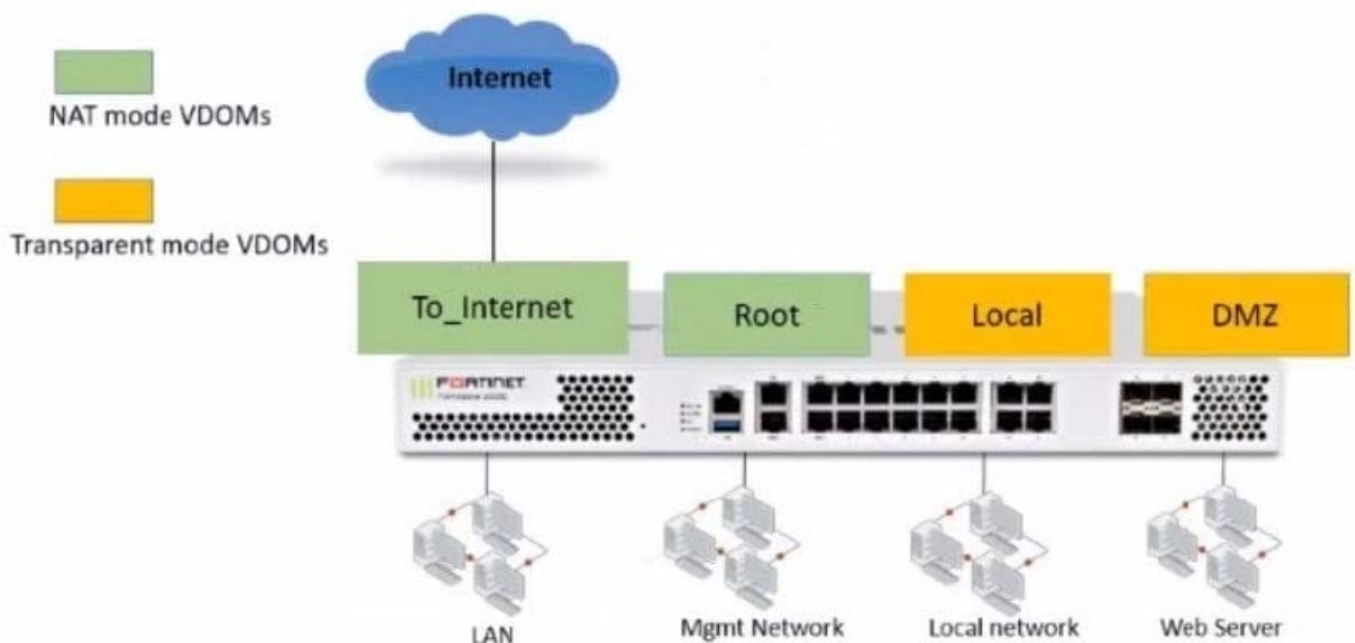
- A. The two VLAN sub interfaces can have the same VLAN ID, only if they have IP addresses in different subnets.
- B. The two VLAN sub interfaces must have different VLAN IDs.
- C. The two VLAN sub interfaces can have the same VLAN ID, only if they belong to different VDOMs.
- D. The two VLAN sub interfaces can have the same VLAN ID, only if they have IP addresses in the same subnet.

Correct Answer: B

FortiGate_Infrastructure_6.0_Study_Guide_v2-Online.pdf ?gt; page 147 "Multiple VLANs can coexist in the same physical interface, provide they have different VLAN ID"

QUESTION 4

Refer to the exhibit.



The Root and To_Internet VDOMs are configured in NAT mode. The DMZ and Local VDOMs are configured in transparent mode.

The Root VDOM is the management VDOM. The To_Internet VDOM allows LAN users to access the internet. The To_Internet VDOM is the only VDOM with internet access and is directly connected to ISP modem.

With this configuration, which statement is true?

- A. Inter-VDOM links are required to allow traffic between the Local and Root VDOMs.
- B. A static route is required on the To_Internet VDOM to allow LAN users to access the internet.
- C. Inter-VDOM links are required to allow traffic between the Local and DMZ VDOMs.
- D. Inter-VDOM links are not required between the Root and To_Internet VDOMs because the Root VDOM is used only as a management VDOM.



Correct Answer: A

Reference: <https://kb.fortinet.com/kb/documentLink.do?externalID=FD46542>

QUESTION 5

What types of traffic and attacks can be blocked by a web application firewall (WAF) profile? (Choose three.)

- A. Traffic to botnetservers
- B. Traffic to inappropriate web sites
- C. Server information disclosure attacks
- D. Credit card data leaks
- E. SQL injection attacks

Correct Answer: CDE

[Latest NSE4_FGT-7.0 Dumps](#)

[NSE4_FGT-7.0 Exam Questions](#)

[NSE4_FGT-7.0 Braindumps](#)