



NSE7_SAC-6.2^{Q&As}

Fortinet NSE 7 - Secure Access 6.2

Pass Fortinet NSE7_SAC-6.2 Exam with 100% Guarantee

Free Download Real Questions & Answers **PDF** and **VCE** file from:

https://www.geekcert.com/nse7_sac-6-2.html

100% Passing Guarantee
100% Money Back Assurance

Following Questions and Answers are all new published by Fortinet Official Exam Center

-  **Instant Download** After Purchase
-  **100% Money Back** Guarantee
-  **365 Days** Free Update
-  **800,000+** Satisfied Customers





QUESTION 1

Which statement correctly describes the quest portal behavior on FortiAuthenticator?

- A. Sponsored accounts cannot authenticate using guest portals.
- B. FortiAuthenticator uses POST parameters and a RADIUS client configuration to map the request to a guest portal for authentication.
- C. All guest accounts must be activated using SMS or email activation codes.
- D. All self-registered and sponsored accounts are listed on the local Users GUI page on FortiAuthenticator.

Correct Answer: A

QUESTION 2

Refer to the exhibit.

Examine the output of the debug command and port configuration shown in the exhibit.

Debug command output

```
# diagnose switch-controller switch-info mac-table
FS108D3W17002387      0 :
  MAC address        Interface          vlan
=====
78:2b:cb:d8:36:68   port1             4094
```

Port configuration

```
config switch-controller managed-switch
  edit FS108D3W17002387
    config ports
      edit port1
        set learning-limit 1
        set discard-mode all-tagged
        set arp-inspection-trust untrusted
      end
    end
```

FortiGate learned the MAC address 78:2b:cb:d8:36:68 dynamically.



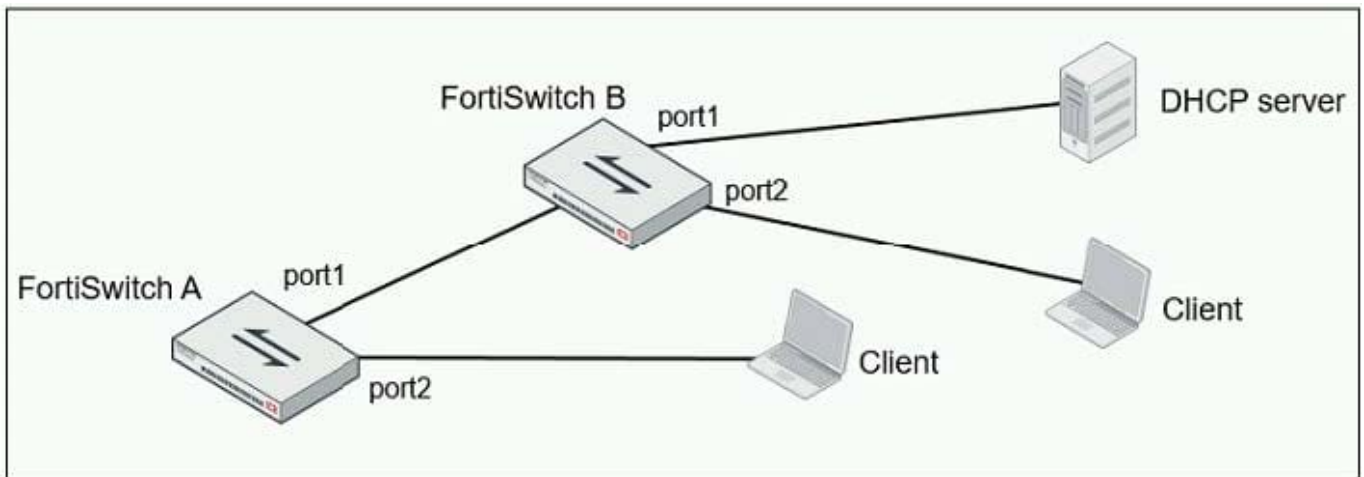
What action does FortiSwitch take if there is an untagged frame coming to port1 will different MAC address?

- A. The frame is accepted and assigned to the quarantine VLAN.
- B. The frame is accepted and FortiSwitch will update its mac address table with the new MAC address.
- C. The frame is dropped.
- D. The frame is accepted and assigned to the user VLAN.

Correct Answer: A

QUESTION 3

Refer to the exhibit.



Given the network topology shown in the exhibit, which two ports should be configured as untrusted DHCP ports? (Choose two.)

- A. FortiSwitch A, port2
- B. FortiSwitch A, port1
- C. FortiSwitch B, port1
- D. FortiSwitch B, port2

Correct Answer: CD

QUESTION 4

What does DHCP snooping MAC verification do?



- A. Drops DHCP release packets on untrusted ports
- B. Drops DHCP packets with no relay agent information (option 82) on untrusted ports
- C. Drops DHCP offer packets on untrusted ports
- D. Drops DHCP packets on untrusted ports when the client hardware address does not match the source MAC address

Correct Answer: D

Reference: <https://docs.fortinet.com/document/fortiswitch/6.4.2/administration-guide/335964/dhcpsnooping> (note)

QUESTION 5

Examine the following RADIUS configuration:

```
config user radius
  edit "FAC-Lab"
    set server "10.0.1.150"
    set secret ENC XXX
    set nas-ip 10.1.0.254
  next
```

An administrator has configured a RADIUS server on FortiGate that points to FortiAuthenticator. FortiAuthenticator is acting as an authentication proxy and is configured to relay all authentication requests to a remote Windows AD server using LDAP.

While testing the configuration, the administrator notices that the diagnose test authservercommand works with PAP, however, authentication requests fail when using MSCHAPv2.

Which two changes should the administrator make to get MSCHAPv2 to work? (Choose two.)

- A. Force FortiGate to use the PAP authentication method in the RADIUS server configuration.
- B. Change the remote authentication server from LDAP to RADIUS on FortiAuthenticator.
- C. Use MSCHAP instead of using MSCHAPv2
- D. Enable Windows Active Directory Domain Authentication on FortiAuthenticator to add FortiAuthenticator to the Windows domain.

Correct Answer: BD

Reference: <https://docs.fortinet.com/document/fortiauthenticator/6.0.0/administration-guide/641286/remote-authentication-servers>