



PCCET^{Q&As}

Palo Alto Networks Certified Cybersecurity Entry-level Technician

Pass Palo Alto Networks PCCET Exam with 100% Guarantee

Free Download Real Questions & Answers **PDF** and **VCE** file from:

<https://www.geekcert.com/pccet.html>

100% Passing Guarantee
100% Money Back Assurance

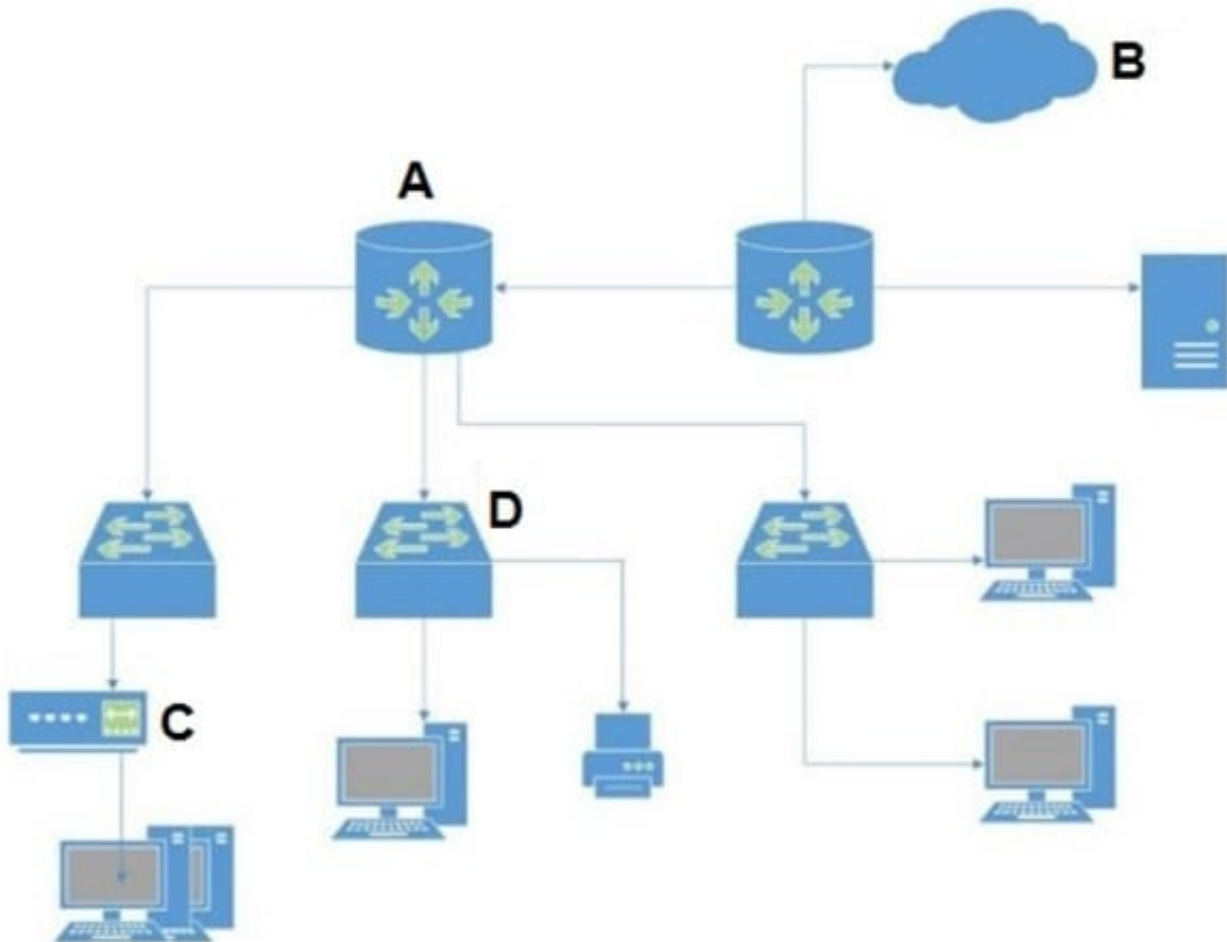
Following Questions and Answers are all new published by Palo Alto Networks Official Exam Center

- ⚙️ **Instant Download** After Purchase
- ⚙️ **100% Money Back** Guarantee
- ⚙️ **365 Days** Free Update
- ⚙️ **800,000+** Satisfied Customers



**QUESTION 1**

In the attached network diagram, which device is the switch?



A. A

B. B

C. C

D. D

Correct Answer: D

QUESTION 2

Which aspect of a SaaS application requires compliance with local organizational security policies?

A. Types of physical storage media used

B. Data-at-rest encryption standards



- C. Acceptable use of the SaaS application
- D. Vulnerability scanning and management

Correct Answer: C

QUESTION 3

Which product from Palo Alto Networks enables organizations to prevent successful cyberattacks as well as simplify and strengthen security processes?

- A. Expedition
- B. AutoFocus
- C. MineMeld
- D. Cortex XDR

Correct Answer: D

From a business perspective, XDR platforms enable organizations to prevent successful cyberattacks as well as simplify and strengthen security processes.

QUESTION 4

Routing Information Protocol (RIP), uses what metric to determine how network traffic should flow?

- A. Shortest Path
- B. Hop Count
- C. Split Horizon
- D. Path Vector

Correct Answer: B

Routing Information Protocol (RIP) is an example of a distance-vector routing protocol that uses hop count as its routing metric. To prevent routing loops, in which packets effectively get stuck bouncing between various router nodes, RIP implements a hop limit of 15, which limits the size of networks that RIP can support. After a data packet crosses 15 router nodes (hops) between a source and a destination, the destination is considered unreachable.

QUESTION 5

In addition to local analysis, what can send unknown files to WildFire for discovery and deeper analysis to rapidly detect potentially unknown malware?

- A. Cortex XDR
- B. AutoFocus



C. MineMild

D. Cortex XSOAR

Correct Answer: A

In addition to local analysis, Cortex XDR can send unknown files to WildFire for discovery and deeper analysis to rapidly detect.

[Latest PCCET Dumps](#)

[PCCET PDF Dumps](#)

[PCCET VCE Dumps](#)