



PEGACSA72V1^{Q&As}

Certified System Architect (CSA) 72V1

Pass Pegasystems PEGACSA72V1 Exam with 100% Guarantee

Free Download Real Questions & Answers **PDF** and **VCE** file from:

<https://www.geekcert.com/pegacsa72v1.html>

100% Passing Guarantee
100% Money Back Assurance

Following Questions and Answers are all new published by
Pegasystems Official Exam Center

-  **Instant Download** After Purchase
-  **100% Money Back** Guarantee
-  **365 Days** Free Update
-  **800,000+** Satisfied Customers





QUESTION 1

You have been asked to configure the following relationship between three case types: Account Open, Link Savings, and Fund Account.

1.

A customer can complete an Account Open case before completing a Fund Account case.

2.

A customer must complete a Link Savings case before completing a Fund Account case. Which configuration satisfies this requirement?

A. Configure the Account Open case type to create a Fund Account case as a top-level case. Configure the Account Open case type to create a Link Savings case as a child case.

B. Configure the Account Open case type to create a Fund Account case as a child case. Configure the Fund Account case type to create a Link Savings case as a top-level case.

C. Configure the Account Open case type to create a Fund Account case as a top-level case. Configure the Fund Account case type to create a Link Savings case as a child case.

D. Configure the Account Open case type to create the other cases as top-level cases. Add a validate rule to the Account Open case to require a resolved Link Savings case before the Fund Account case can be resolved.

Correct Answer: C

QUESTION 2

You are designing a case type that includes a process to perform when a case is rejected. How do you model this requirement in the case life cycle?

A. Add a primary stage and add the rejection process to the stage.

B. Add an alternate stage and add the rejection process as an optional process to the stage.

C. Add an alternate stage and add the rejection process to the stage.

D. Add the rejection process to all the primary stages as an optional process.

Correct Answer: C

QUESTION 3

A form allows customers to specify the amount of a balance transfer for their credit card. The form contains two fields: one to display the available balance on the customer's credit card, and one for the user to enter the amount of the balance transfer.

You configure a validate rule to verify that the amount of a balance transfer is less than 75% of the available balance on the customer's credit card. How do you call the validate rule?

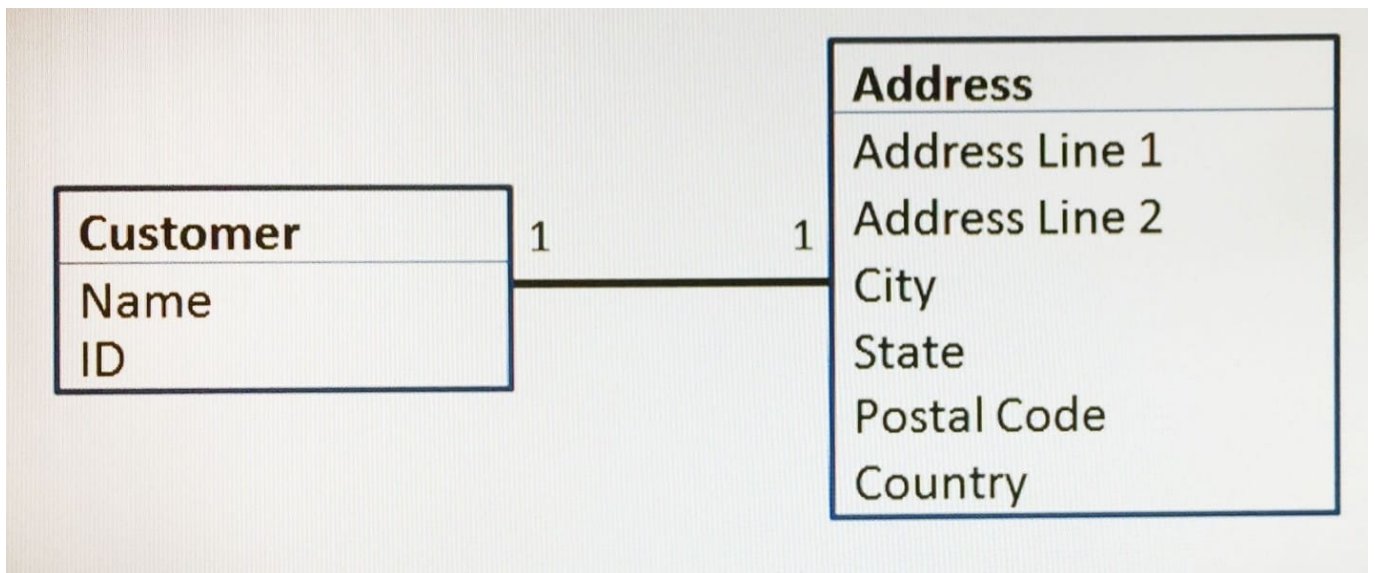


- A. From the step in the case life cycle.
- B. From the section that contains the field for entering the amount of the balance transfer
- C. From the flow action where the customer submits the form
- D. From the property used to capture the amount of the balance transfer

Correct Answer: C

QUESTION 4

A customer data object references an address as depicted by the data model below. How would you define the address property in the customer class?



- A. As a single value
- B. As a page
- C. As a page list
- D. As a page group

Correct Answer: C

Reference <https://pdn.pega.com/load-data-page-property>

QUESTION 5

A manager requests a report that contains the following columns: Create Date, Case ID, Create Operator, and Work Status. You must sort the cases so the case with the most recent create date appears at the top of the list and descends in order.

How would you design the report definition to support this requirement?



- A. Select Count in the Summarize column for Create Date.
- B. Make that Create Date the first column in the report.
- C. Select Highest to Lowest sort type for Create Date.
- D. Add a filter condition where Create Date is greater than the current date.

Correct Answer: C

[Latest PEGACSA72V1 Dumps](#)

[PEGACSA72V1 Study Guide](#)

[PEGACSA72V1 Braindumps](#)