



VCE & PDF

GeekCert.com

https://www.geekcert.com/pegapcrsa80v1_2019.html
2024 Latest geekcert PEGAPCRSA80V1_2019 PDF and VCE dumps
Download

PEGAPCRSA80V1_2019^{Q&As}

Pega Certified Robotics System Architect 80V1 2019

Pass Pegasystems PEGAPCRSA80V1_2019 Exam with 100% Guarantee

Free Download Real Questions & Answers **PDF** and **VCE** file from:

https://www.geekcert.com/pegapcrsa80v1_2019.html

100% Passing Guarantee
100% Money Back Assurance

Following Questions and Answers are all new published by
Pegasystems Official Exam Center

- ⚙️ **Instant Download** After Purchase
- ⚙️ **100% Money Back** Guarantee
- ⚙️ **365 Days** Free Update
- ⚙️ **800,000+** Satisfied Customers





QUESTION 1

You created an RDA solution for a company that uses an application bar with various buttons that trigger robotic automations. Some of the users complained that the application bar often locks up during automation processing. Others

complained that the automations enter the same data two to three times each iteration.

You suspect that the users are triggering the crashes and duplicate automation behavior by double-clicking the buttons on the application bar.

How do you resolve the situation?

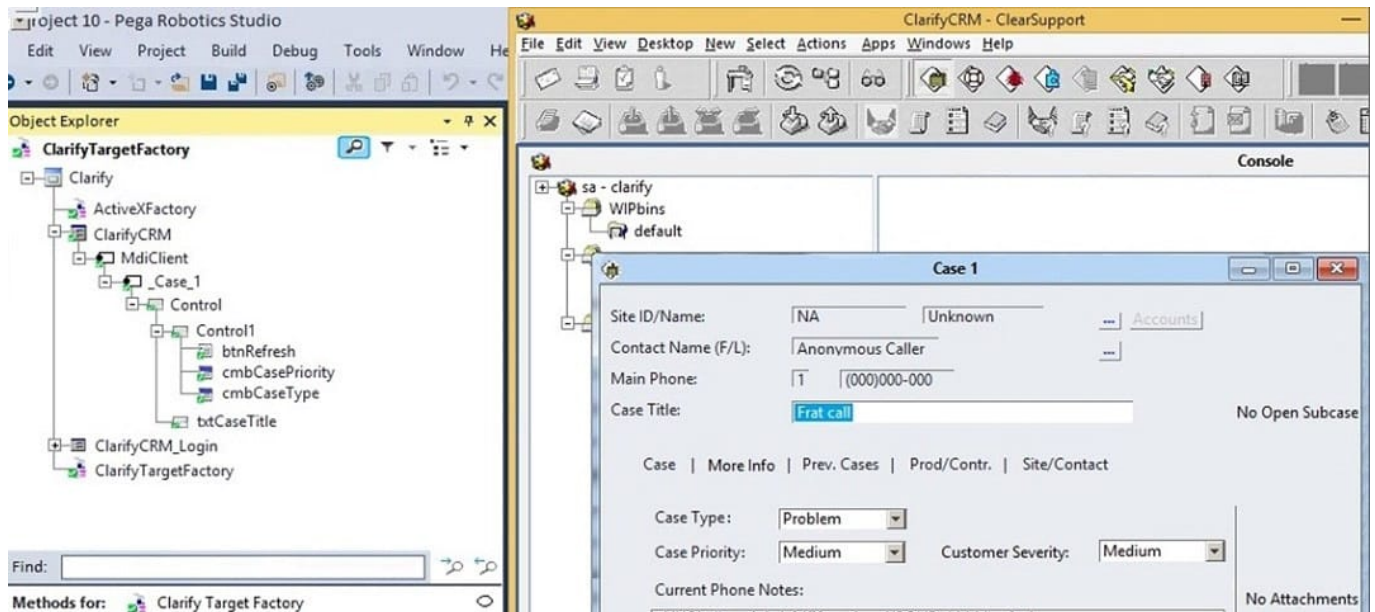
- A. Hide the application bar as soon as the user clicks one of the buttons, and allow the application bar to reappear once the automation completes.
- B. After the initial click, disable the application bar buttons, display an automation progress bar, and then re-enable the buttons once the automation completes.
- C. Talk with the management team about the existing application bar behavior and user error at the company.
- D. Modify the automations so that they display a full message using the MessageManifest when the automations complete.

Correct Answer: C

QUESTION 2

During application discovery of a Clarify application, you determine that the user accesses more than one customer case concurrently within the application, which creates multiple windows of the same type. This requires you to enable the UseKeys property on an application\\'s object.

Based on the image that shows the application and the matched controls in the Object Explorer, which control\\'s UseKeys property must be set to True?



- A. ClarifyCRM
- B. MdiClient
- C. _Case_1
- D. Control

Correct Answer: A

Reference: <https://community.pega.com/knowledgebase/articles/how-do-i-use-keys-navigate-between-multiple-instances-object>

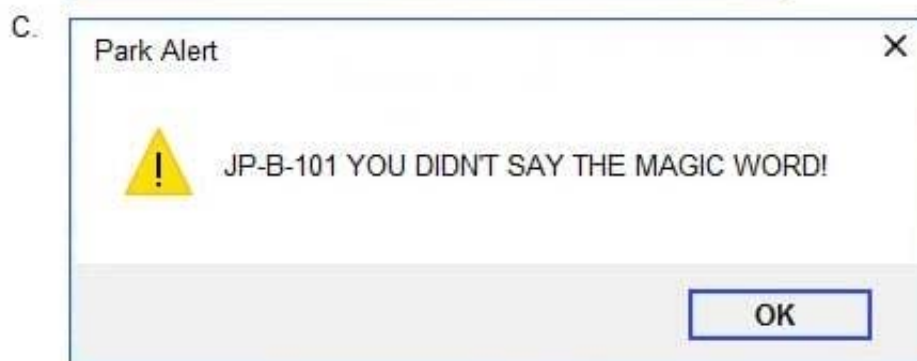
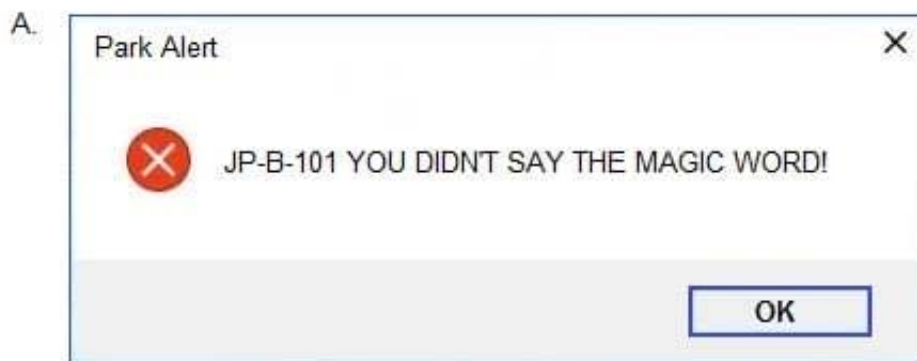
QUESTION 3

The following image shows a Message Definitions configuration.

Code	Caption	Button	Icon	Default Button	Message
JP-B-101	Park Alert	OK	Warning	Button 1	YOU DIDN'T SAY THE MAGIC WORD!

AddRemoveShow Test Dialog...Export...OKCancel

Which option is the correct representation of the message configuration settings?



A. Option A

B. Option B

C. Option C

D. Option D



Correct Answer: B

QUESTION 4

A solution design document outlines several projects for the solution. You are assigned to the Loan Servicing project (LoanSvcPrj). The project uses the Interaction Framework function to communicate with the other projects. Which three toolbox project items do you add to LoanSvcPrj? (Choose three.)

- A. Message Manifest
- B. Interaction.xml
- C. Interaction Manager
- D. Activity
- E. String Variable

Correct Answer: BDE

QUESTION 5

HOTSPOT

Pega Robot Studio provides five rules on how to differentiate between cloneable application objects when using key assignments in automations. The first rule states that an event creates the instance to set the context of a cloneable object. The remaining four rules state the requirements for a key assignment.

In the Answer Area, determine if each rule description requires a key assignment.

Hot Area:

Answer Area

<u>Rule Description</u>	<u>Key Assignment Required?</u>
An event from Child Context to Parent Context	<div><div></div><div>Requires a key assignment</div><div>Does not require a key assignment</div></div>
An event from Parent Context to Child Context	<div><div></div><div>Requires a key assignment</div><div>Does not require a key assignment</div></div>
Logic within the same context	<div><div></div><div>Requires a key assignment</div><div>Does not require a key assignment</div></div>
An event from No Context to a Context	<div><div></div><div>Requires a key assignment</div><div>Does not require a key assignment</div></div>



Correct Answer:

Answer Area

Rule Description

An event from Child Context to Parent Context

An event from Parent Context to Child Context

Logic within the same context

An event from No Context to a Context

Key Assignment Required?

☐

Requires a key assignment

Does not require a key assignment

☐

Requires a key assignment

Does not require a key assignment

☐

Requires a key assignment

Does not require a key assignment

☐

Requires a key assignment

Does not require a key assignment

[Latest PEGAPCRSA80V1_2019 Dumps](#)

[PEGAPCRSA80V1_2019 PDF Dumps](#)

[PEGAPCRSA80V1_2019 Braindumps](#)