



# PL-500<sup>Q&As</sup>

Microsoft Power Automate RPA Developer

## Pass Microsoft PL-500 Exam with 100% Guarantee

Free Download Real Questions & Answers **PDF** and **VCE** file from:

<https://www.geekcert.com/pl-500.html>

100% Passing Guarantee  
100% Money Back Assurance

Following Questions and Answers are all new published by Microsoft  
Official Exam Center

-  **Instant Download** After Purchase
-  **100% Money Back** Guarantee
-  **365 Days** Free Update
-  **800,000+** Satisfied Customers





### QUESTION 1

You have an automation solution that uses a desktop flow. The flow reads data from a file that is stored on a user's machine and writes the data to an application. You import the solution to an environment that is connected to another user's

machine.

The user reports that the flow fails. An alert indicates that the path to a file does not exist.

You confirm that the file present on the user's desktop.

You need to resolve the issue.

What should you do?

- A. Use the Get Windows environment variable action to read the USERNAME environment variable and use the value in the path to the user's desktop.
- B. Change access rights for the file to allow read operations for the PAD process.
- C. Move the file to the user's OneDrive storage.
- D. Change the access rights for the file to allow read operations for the current user.

Correct Answer: A

---

### QUESTION 2

DRAG DROP

You are designing an automation that processes information from documents attached to emails.

You need to extract data from the attachments and insert the data into a custom Microsoft Dataverse table.

Which five actions should you perform in sequence? To answer, move the appropriate actions from the list of actions to the answer

Select and Place:



**Actions**

Create a collection and add documents to the collection.

Create an object detection model.

Use the model in a desktop flow.

Create a custom form processing model.

Train and publish a model.

Add extracted data to the Microsoft Dataverse table.

Use the model in a cloud flow.

**Answer Area**

Five empty green rectangular boxes for providing an answer.

Correct Answer:



**Actions**

- Create a collection and add documents to the collection.
- Create an object detection model.
- Use the model in a desktop flow.
- Create a custom form processing model.
- Train and publish a model.
- Add extracted data to the Microsoft Dataverse table.
- Use the model in a cloud flow.

**Answer Area**

- Create a custom form processing model.
- Create a collection and add documents to the collection.
- Train and publish a model.
- Use the model in a cloud flow.
- Add extracted data to the Microsoft Dataverse table.

**QUESTION 3**

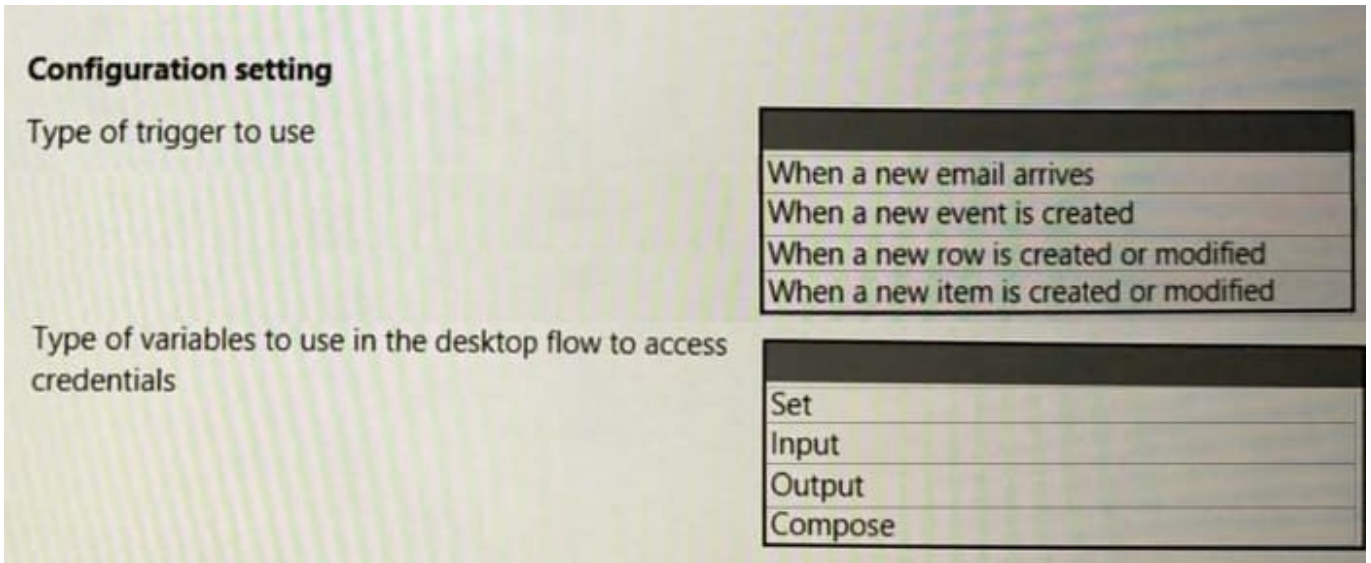
**HOTSPOT**

You need to configure sharing for MaintenanceScheduler.

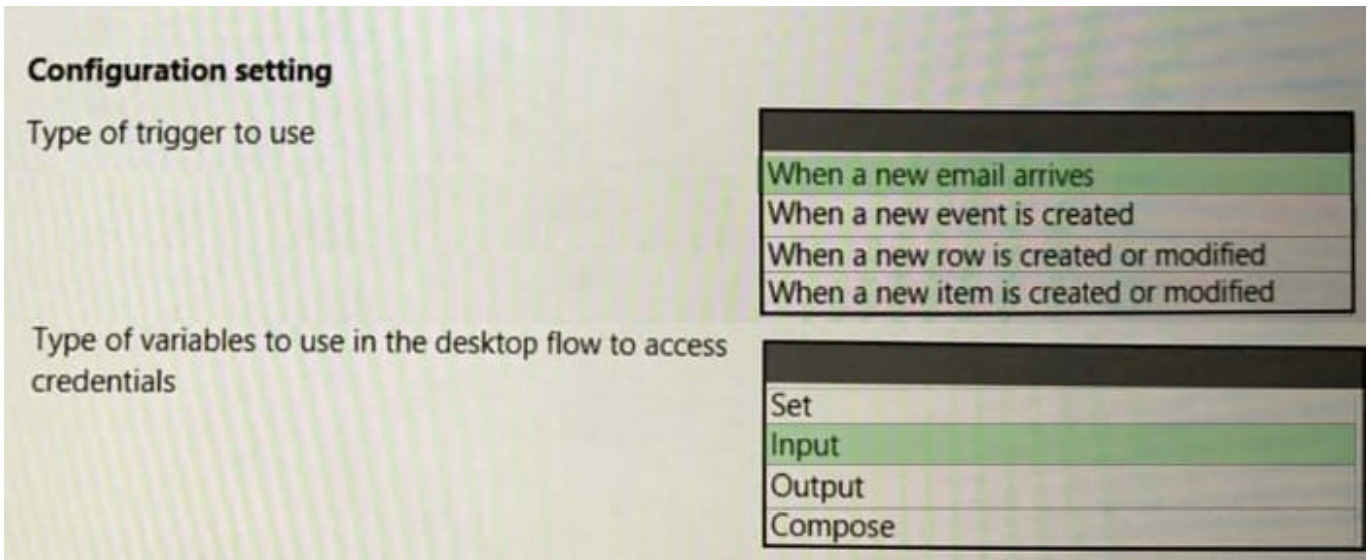
Which sharing methods should you use? To answer, select the appropriate options in the answer area.

NOTE: Each correct selection is worth one point.

Hot Area:



Correct Answer:



#### QUESTION 4

You have an automation solution that uses a desktop flow. The flow reads data from a file that is stored on a user's machine and writes the data to an application. You import the solution to an environment that is connected to another user's machine. The user reports that the flow fails. An alert indicates that the path to a file does not exist. You confirm that the file is present on the user's desktop. You need to resolve the issue.

What should you do?

- A. Move the file to the user's documents folder.
- B. Move the file to the user's OneDrive storage.
- C. Delete and recreate the file.



D. Change the location of the file to a specific path that is not dependent on the signed-in user.

Correct Answer: D

---

### QUESTION 5

You develop automation solutions for a company.

When a new record is added to a Microsoft Dataverse table, the solution must add the contents of the record to a Microsoft Word Online (Business) template. The solution must convert the template to a PDF document and email the PDF

document to a stakeholder.

You need to design the solution.

Which three actions should you perform? Each correct answer presents part of the solution. NOTE: Each correct selection is worth one point.

- A. Use the Convert Word Document to PDF and Send an email actions in a cloud flow.
- B. Use the Convert Word Document to PDF and Send an email actions in a desktop flow.
- C. Use the Populate a Microsoft Word Online (Business) template action in a desktop flow.
- D. Use the Populate a Microsoft Word Online (Business) template action in a cloud flow.
- E. Create a cloud flow that uses the When a row is added or modified trigger in Microsoft Dataverse.

Correct Answer: ADE

[PL-500 Study Guide](#)

[PL-500 Exam Questions](#)

[PL-500 Braindumps](#)