



QSSA2018^{Q&As}

Qlik Sense System Administrator Certification Exam

Pass QlikView QSSA2018 Exam with 100% Guarantee

Free Download Real Questions & Answers **PDF** and **VCE** file from:

<https://www.geekcert.com/qssa2018.html>

100% Passing Guarantee
100% Money Back Assurance

Following Questions and Answers are all new published by QlikView
Official Exam Center

-  **Instant Download** After Purchase
-  **100% Money Back** Guarantee
-  **365 Days** Free Update
-  **800,000+** Satisfied Customers





QUESTION 1

A company recently experienced a merger and needs to integrate new users into the Qlik Sense environment.

A system administrator must make sure that the system sizing and the tokens match the requirements for all employees in the future.

The system administrator learns the following information: 450 active Qlik Sense users before the merger 300 new Qlik Sense users 500 current token licenses Reloads must have the same performance as before the merger The number of apps will approximately double

Management requests an estimate from the system administrator about server resources and additional licenses.

Which set of tools should the system administrator use to meet these requirements?

- A. Performance Monitor, Reloads Monitor, Scalability Tools, and License Monitor
- B. Performance Monitor, License Monitor, Operations Monitor, and Scalability Tools
- C. Performance Monitor, Reloads Monitor, QlikCockpit, and License Monitor
- D. Performance Monitor, Reloads Monitor, Operations Monitor, and Scalability Tools

Correct Answer: B

QUESTION 2

A system administrator installs Qlik Sense Enterprise and is testing the product with a small team of 10 users.

The users report that the page is NOT trusted on their machines and they receive a certificate warning message. When the system administrator tries to validate this feedback on the server, the administrator does NOT see the same issue.

The system administrator completes the following steps in the proxy configuration: Opens all necessary ports Checks in MMC that there is a personal certificate on the server Creates a DNS entry for an easier URL Tries to connect with various Internet browsers on different machines including mobile devices Adds the page to trusted sites in the Internet configurations Installs OpenSSL in the environment

Which steps should the system administrator take to resolve this issue?

- A. 1. Generate a valid certificate for organizational needs using OpenSSL
- 2. Add the certificate to the personal certificate store of the Qlik Sense Service User
- 3. Add the thumbprint of the third-party certificate to the proxy configuration in the QMC
- B. 1. Acquire a third-party certificate from a trusted root certificate authority (CA)



2.

Add the certificate to the personal local computer certificate store

3.

Add the thumbprint of the third-party certificate to the proxy configuration in the QMC

C. 1. Acquire a third-party certificate from a trusted root certificate authority (CA)

2.

Add the certificate to the personal certificate store of the Qlik Sense Service User

3.

Add the thumbprint of the third-party certificate to the proxy configuration in the QMC

D. 1. Acquire a third-party certificate from a trusted root certificate authority (CA) including private key

2.

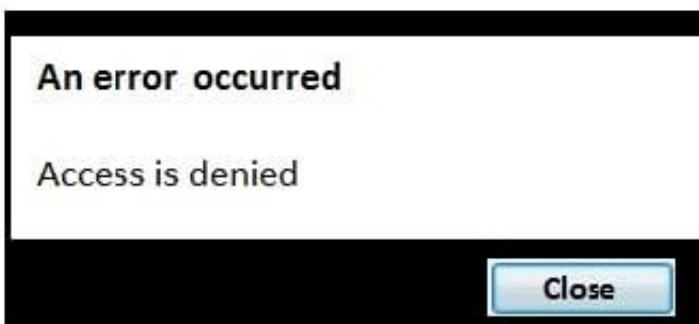
Add the certificate to the personal local computer certificate store

3.

Add the thumbprint of the third-party certificate to the proxy configuration in the QMC

Correct Answer: C

QUESTION 3



Refer to the exhibit.

A user from the HR department has access to the HR stream. The rule on the stream is:

```
((user.group!="Delivery" and user.group!="Account Manager" and user.userDirectory!="Externals"))
```

When the user tries to open the app in the HR stream, the error in the exhibit displays.

What is causing this error?



- A. The stream rule `user.userDirectory\` is excluding the user
- B. The app contains section access that does NOT include the HR stream security rule
- C. The HR group is NOT included in the rule to access the stream and the app
- D. The app contains section access that does NOT include the user

Correct Answer: C

QUESTION 4

A user owns an app that was previously published and wants to delete the app in the hub. The user is NOT able to delete the app.

What could be causing this issue?

- A. The app is open and is being accessed by another user
- B. Published apps can only be deleted from the QMC
- C. The user needs to be assigned the RootAdmin role
- D. The user needs to be assigned the ContentAdmin role

Correct Answer: B

Reference: https://help.qlik.com/en-US/sense/November2019/Subsystems/Hub/Content/Sense_Hub/Apps/delete-app.htm

QUESTION 5

A data architect creates an app in Qlik Sense Desktop with an ODBC data connection from Apache Hive using a single sign-on solution (SSO). When the app is published in the hub, the data connection fails.

A system administrator tests the login credentials for the ODBC connection on the server and is able to access the database. Why does the data connection fail?

- A. Qlik Sense Desktop is NOT allowing Qlik Sense server to use Apache Hive
- B. The data architect's account is NOT assigned the RootAdmin role
- C. The service account user is NOT part of the SSO solution in Apache Hive
- D. The Qlik Sense server does NOT support ODBC connections with Apache Hive

Correct Answer: C