



S10-210^{Q&As}

Storage Networking Management and Administration

Pass SNIA S10-210 Exam with 100% Guarantee

Free Download Real Questions & Answers **PDF** and **VCE** file from:

<https://www.geekcert.com/s10-210.html>

100% Passing Guarantee
100% Money Back Assurance

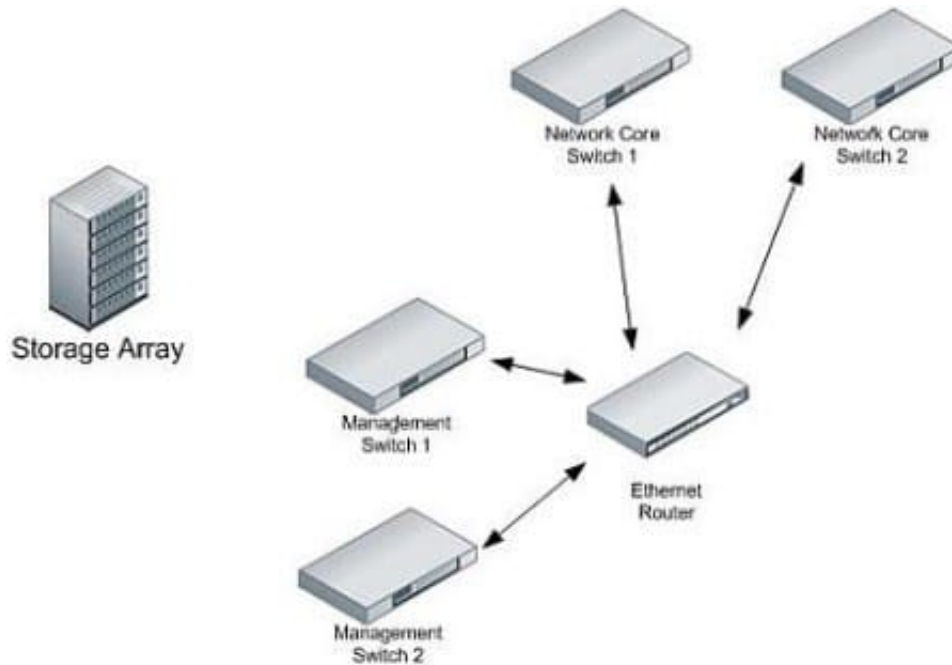
Following Questions and Answers are all new published by SNIA
Official Exam Center

- ⚙️ **Instant Download** After Purchase
- ⚙️ **100% Money Back** Guarantee
- ⚙️ **365 Days** Free Update
- ⚙️ **800,000+** Satisfied Customers



**QUESTION 1**

Click the Exhibit button.



Your company has purchased a new storage array that has dual management access network ports. You need to connect the array and provide maximum redundancy without affecting production traffic. Referring to the exhibit, where should the ports be attached?

- A. Cable one management access network port into management switch 1 and the other port into management switch 2.
- B. Cable both management access network ports into management switch 2.
- C. Cable one management access network port into core switch 1 and the other into core switch 2.
- D. Cable both management access network ports into management switch 1.

Correct Answer: A

QUESTION 2

Which protocol commonly uses CNA devices?

- A. FCIP
- B. iFCP
- C. FCoE
- D. FCR



Correct Answer: C

QUESTION 3

A storage networking device has experienced a failure that has "phone home" and opened a service request for a part that can be a customer replaceable unit (CRU). Your support vendor has dispatched a replacement part using a secure courier service.

According to SNIA Storage Security Best Current Practices, which statement is correct about the repair process?

- A. The support vendor's parts courier should have access to the secure data center to facilitate an unattended part swap-out bringing the fastest resolution to the failure.
- B. The data center operations staff should accept the part and place it in a secure staging area awaiting a qualified administrator to perform the installation.
- C. Any data center operator on-site should perform the part installation bringing the fastest resolution to the failure.
- D. The support vendors parts courier should coordinate with a field service staff person from your support vendor; both should have access to the secure data center to facilitate an unattended part swap-out.

Correct Answer: B

QUESTION 4

You want to visibly verify FC port initialization by reading an analyzer trace. Your objective is to find the frames associated with the initialization protocol to ensure that the FC device is operating correctly during the login process, to be recognized as part of the switched fabric, and appear in a directory of attached FC devices.

What must all Fibre Channel devices do to accomplish this?

- A. Log in using the Name server.
- B. Log in using the Fabric Controller.
- C. Log in using the Management server.
- D. Log in using the Fabric Login server.

Correct Answer: D

QUESTION 5

Your company's Service Level Agreement (SLA) requires that no more than one hour's worth of data be lost in case of a system crash. The data must also be restored within 10 hours.

Which two RTO/RPO combinations meet the SLA? (Choose two.)

- A. RTO 1 hour, RPO 10 hours
- B. RTO 10 hours, RPO 1 hour



C. RTO 9 hours, RPO 1 hour

D. RTO 1 hour, RPO 9 hours

Correct Answer: BC

[Latest S10-210 Dumps](#)

[S10-210 PDF Dumps](#)

[S10-210 VCE Dumps](#)