



UIPATH-ARDV1^{Q&As}

UiPath Advanced RPA Developer v1.0 Exam (UiARD)

Pass UiPath UIPATH-ARDV1 Exam with 100% Guarantee

Free Download Real Questions & Answers **PDF** and **VCE** file from:

<https://www.geekcert.com/uipath-ardv1.html>

100% Passing Guarantee
100% Money Back Assurance

Following Questions and Answers are all new published by UiPath
Official Exam Center

- ⚙️ **Instant Download** After Purchase
- ⚙️ **100% Money Back** Guarantee
- ⚙️ **365 Days** Free Update
- ⚙️ **800,000+** Satisfied Customers





QUESTION 1

A developer wants to pass a value of a variable to a workflow and modify it inside. However, after the workflow is finished, developer wants to use the original value of the variable. What should be the direction of the argument?

- A. In
- B. Reserved
- C. Out
- D. In/Out

Correct Answer: A

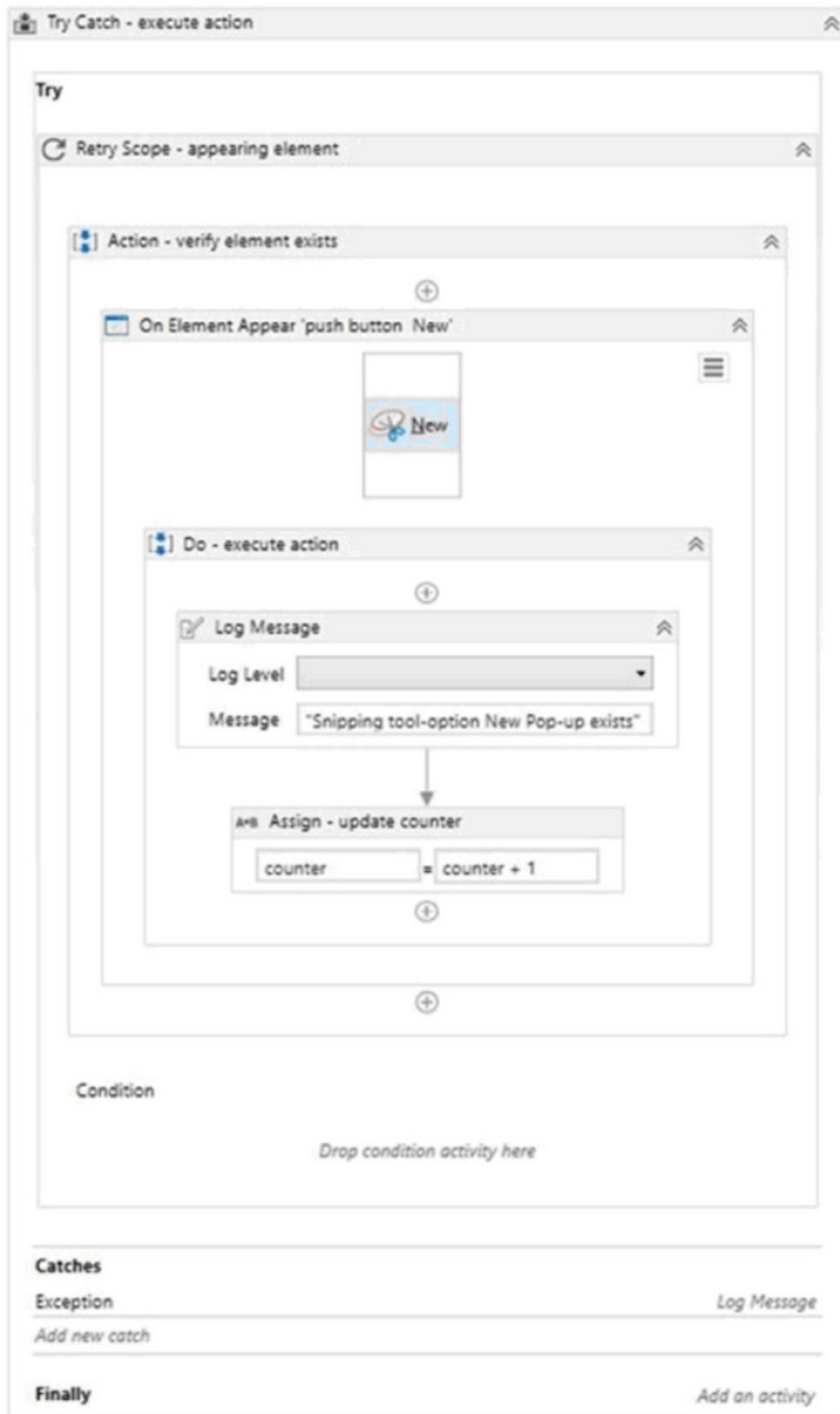
The following directions are available:

In the argument can only be used within the given project. If the variable is modified inside the workflow, its value is not changed in the main workflow. Out the argument can be used to pass data outside of a given project. In/Out

the arguments can be used both within and outside of a given project.

QUESTION 2

A developer created the following sequence:





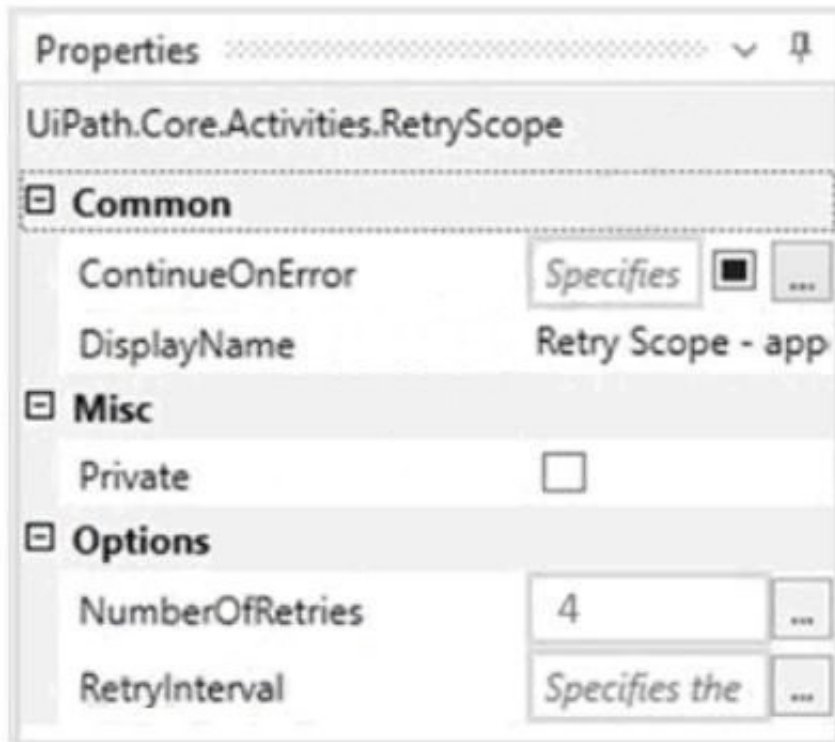
The following reflects the Catches block for the Try Catch activity:

The screenshot shows the 'Try Catch - execute action' block in the UiPath Studio interface. The 'Catches' tab is active, displaying a list of catch blocks. A single catch block is defined for the 'exception' type. Within this catch block, a 'Log Message' activity is added. The 'Log Level' is set to 'Error' (indicated by a red icon), and the 'Message' is set to 'Value of counter is: ' + counter.ToString'. The 'Finally' tab is visible at the bottom, with an 'Add an activity' button.

The Variable tab appears below:

| Name | Variable type | Scope | Default |
|-----------------|---------------|-------|---------|
| counter | Int32 | Main | 1 |
| Create Variable | | | |

The Properties for the Retry Scope activity are shown below:



The Properties for the On Element Appear activity are as follows:



Properties

UiPath.Core.Activities.OnUiElementAppear

Common

ContinueOnError

Specifies

☐

...

DisplayName

On Element Appea

Input

Target

Target

ClippingRegion

▼

Element

Enter a VB ex

...

Selector

"<wnd app=

...

Timeout (milliseconds)

5000

...

WaitForReady

Before pe

▼

...

Misc

Private

☐

Options

RepeatForever

True

...

WaitActive

When thi

☐

...

WaitVisible

True

☒

...

Output

FoundElement

The resulted

...



Based on the configurations shown in the exhibits, which output is displayed in the Output panel when the target exists at runtime and it is not visible on the screen?

- A. Snipping tool-option New Pop-up exists Snipping tool-option New Pop-up exists Snipping tool-option New Pop-up exists
- B. Snipping tool-option New Pop-up exists Snipping tool-option New Pop-up exists Snipping tool-option New Pop-up exists
- C. Value of counter is: 4
- D. Snipping tool-option New Pop-up exists Snipping tool-option New Pop-up exists Snipping tool-option New Pop-up exists Value of counter is: 4

Correct Answer: D

QUESTION 3

Review the following exhibit: Based on the exhibit, what is the result of the Write Line in the sequence?



A+B Assign

TestDictionary = New Dictionary(Of

New Dictionary(Of String, Object)

// Comment – Previous assignment

// TestDictionary = New Dictionary(Of
String, Object)

A+B Assign

TestDictionary("a") = 123

A+B Assign

TestDictionary("b") = "Hello"

A+B Assign

TestDictionary("a") = True

Write Line

Text TestDictionary("a").ToString



- A. 123
- B. True
- C. Hello
- D. 123True

Correct Answer: B

QUESTION 4

You are creating a Credential asset in Orchestrator as shown in the following exhibit.



Create Asset

Asset name *

SAP_Credential

Type

Credential



Description

Credential Store

Orchestrator Database



Global Value

Username *

SAPUserOne

Password *



When the global value is enabled every robot will receive it, unless specifically overridden in the table below.



ROBOT

VALUE

☰ Optionally you can also add robot values.

CANCEL

CREATE

Once the asset is created, what are you unable to edit using the default Orchestrator settings?

- A. Username
- B. Type
- C. Password
- D. Asset name

Correct Answer: B



QUESTION 5

A developer runs the process in Debug mode. Which panel allows to see, which activity will be executed next?

- A. The Immediate Panel
- B. The Call Stack Panel
- C. The Locals Panel
- D. The Watch Panel

Correct Answer: B

The Call Stack panel displays the next activity to be executed and its parent containers when the project is paused in debugging. The panel is displayed during execution in debug mode and it gets populated after using Step Into, Break, Slow Step, or after the execution was paused because an error or a breakpoint was encountered.

[UIPATH-ARDV1 PDF Dumps](#)

[UIPATH-ARDV1 Practice Test](#)

[UIPATH-ARDV1 Study Guide](#)