



UIPATH-ARDV1^{Q&As}

UiPath Advanced RPA Developer v1.0 Exam (UiARD)

Pass UiPath UIPATH-ARDV1 Exam with 100% Guarantee

Free Download Real Questions & Answers **PDF** and **VCE** file from:

<https://www.geekcert.com/uiopath-ardv1.html>

100% Passing Guarantee
100% Money Back Assurance

Following Questions and Answers are all new published by UiPath Official Exam Center

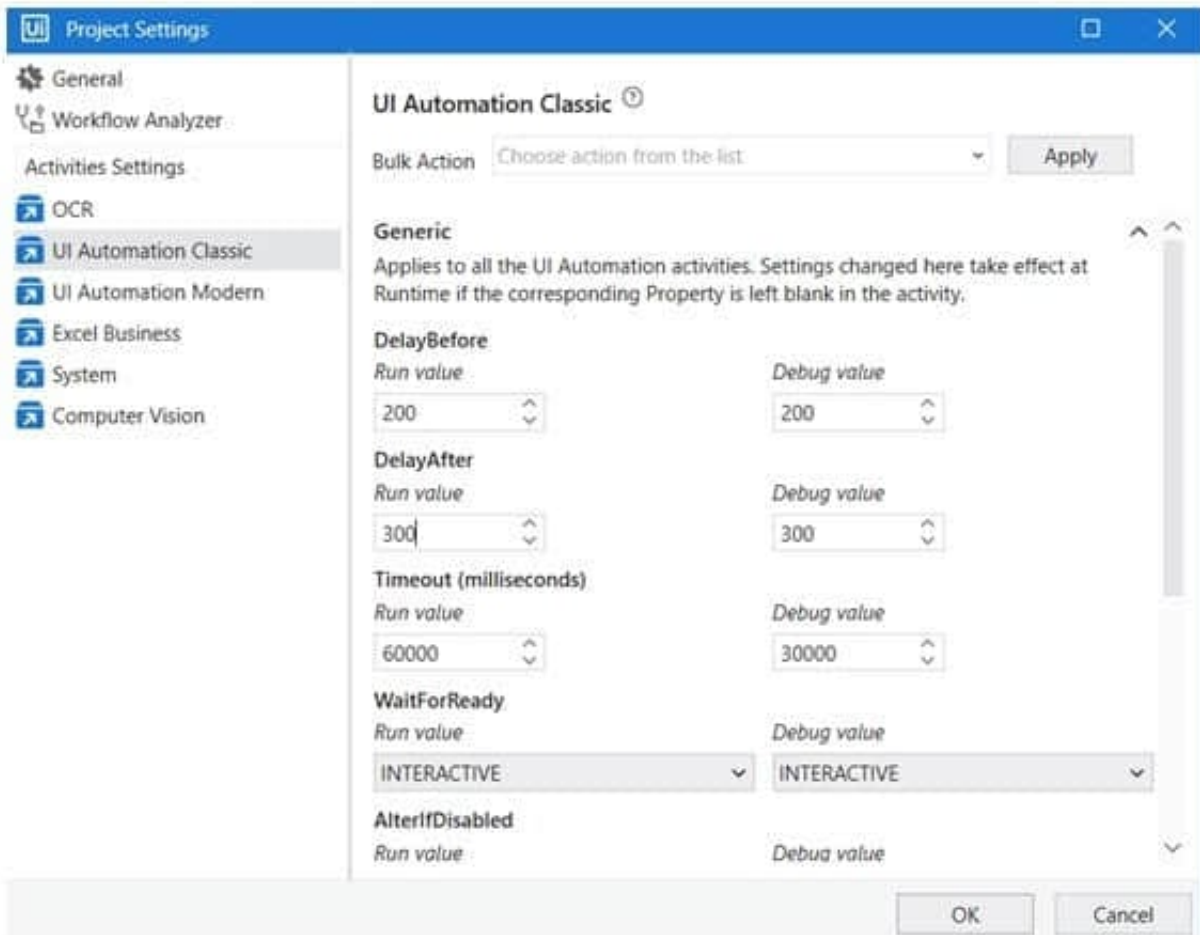
-  **Instant Download** After Purchase
-  **100% Money Back** Guarantee
-  **365 Days** Free Update
-  **800,000+** Satisfied Customers



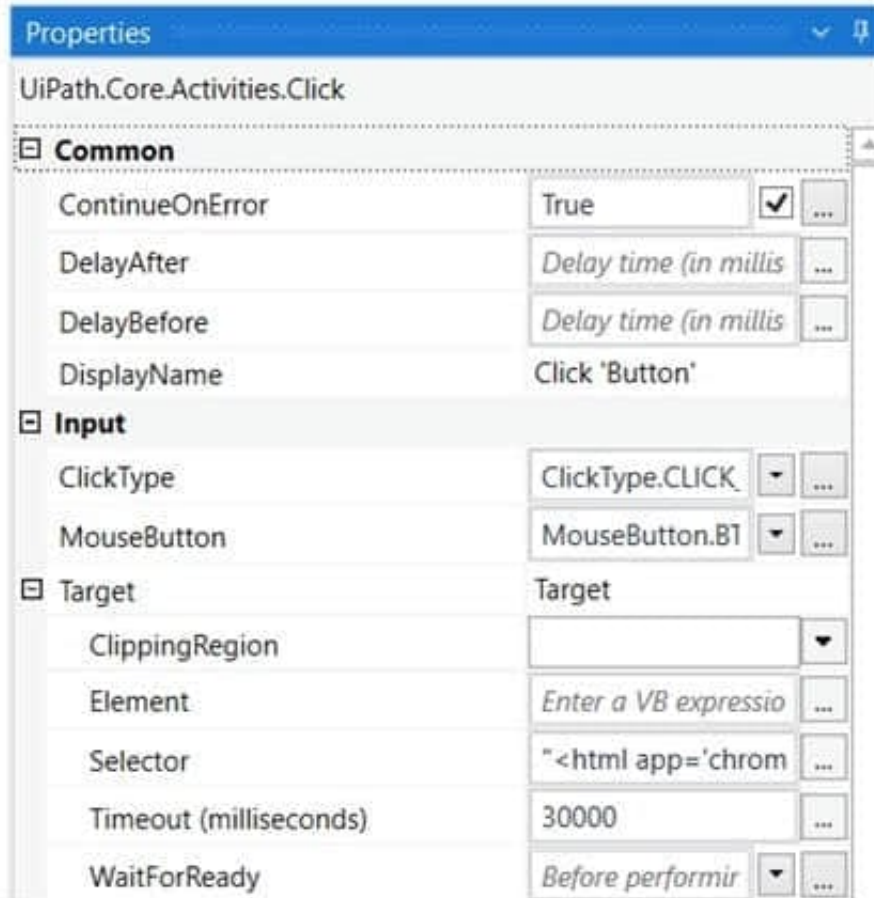


QUESTION 1

A developer has configured the Activity Project Settings for UI automation and a Click activity as shown below. The required selector does not exist. What Timeout value will be used by the robot once executed in Run Mode?



Please find the properties of the Click activity below.



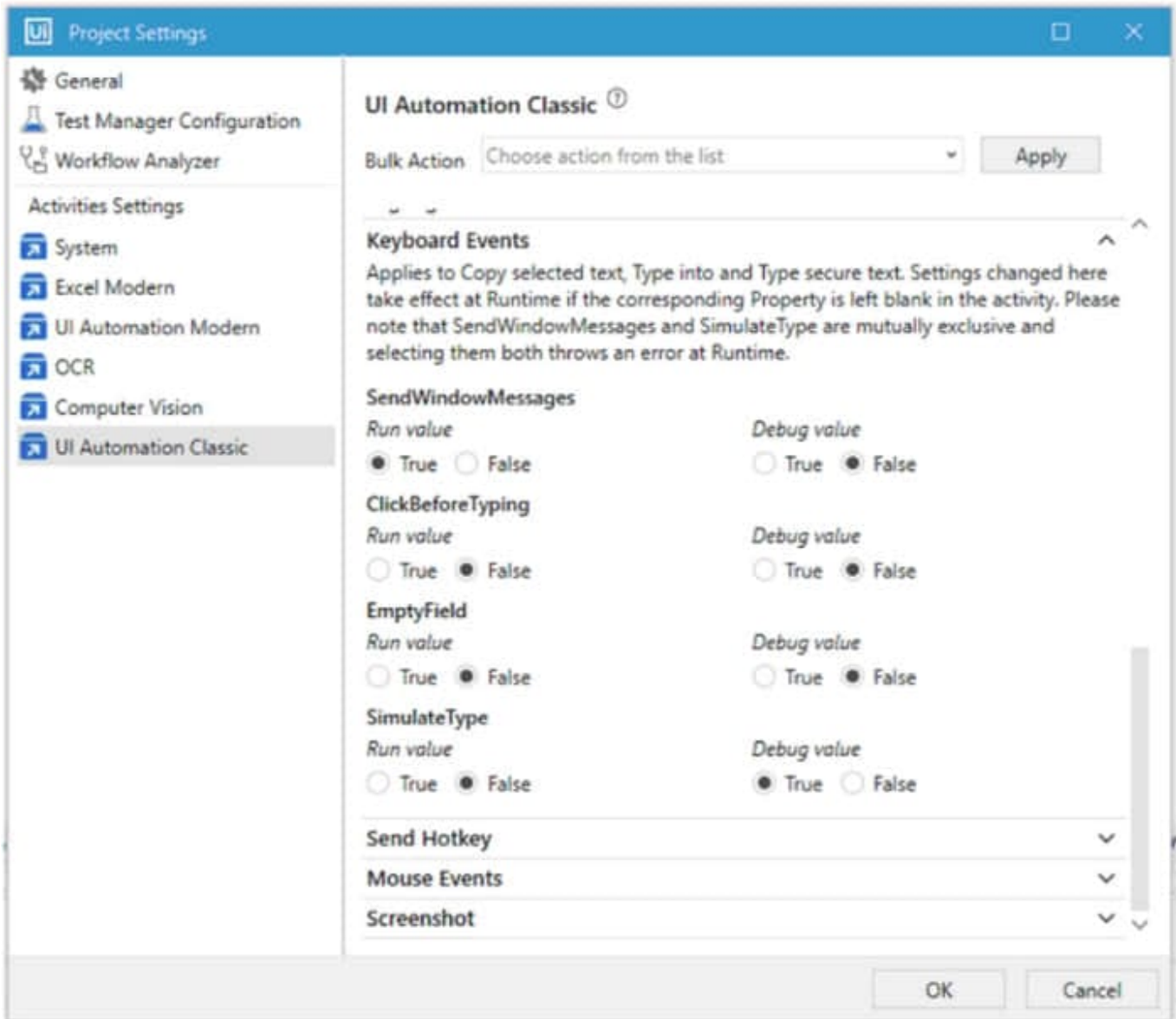
- A. 90 seconds
- B. 0 seconds
- C. 60 seconds
- D. 30 seconds

Correct Answer: D

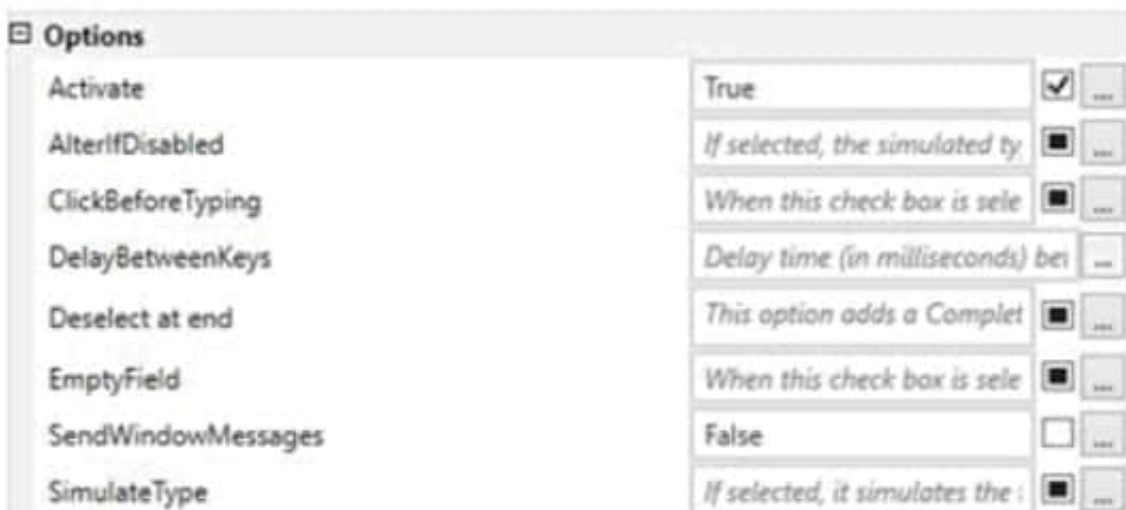
Settings changed in Project Settings take effect if the corresponding property is left blank in the activity. If in the same project an activity has the Timeout property manually set (even if the value 30000 milliseconds is the same as the default one), then the value set in the property panel overwrites any other value configured in the Activity Project Settings window.

QUESTION 2

A developer is building an automation which types text into the fields of a web page. The Activity Project Settings for UI Automation Classic activities are set as follows:



The developer has configured the properties of a Type Into activity as follows:





What is the behavior of the Type Into activity when executing the workflow?

- A. The activity will use SimulateType in Run mode and in Debug mode.
- B. The activity will use Default in Run mode and in Debug mode.
- C. The activity will use SendWindowMessages in Run mode and SimulateType in Debug mode.
- D. The activity will use Default in Run mode and SimulateType in Debug Mode.

Correct Answer: D

QUESTION 3

A developer creates a Dispatcher which extracts information from a Microsoft Excel file and uploads that information into an Orchestrator queue. What is the recommended way to avoid creating duplicate Queue Items?

- A. Set the "Unique Reference" of the queue to "No" Set "Auto Retry" of the queue to "Yes"
- B. Set the "Unique Reference" of the queue to "Yes" Add a descriptive "Reference" in the Add Queue Item activity
- C. Add a descriptive "Reference" in the Add Queue Item activity Check that it does not equal the "Reference" of the Queue Item last uploaded
- D. Create an Excel file of processed Queue Items Loop through the list to check if the current Queue Item to upload has been uploaded before

Correct Answer: B

QUESTION 4

Scheduling a process is done from:

- A. Orchestrator Server
- B. Not Possible
- C. UiPath Studio
- D. UiPath Robot

Correct Answer: A

QUESTION 5

A developer used title=\\1 writtenNotes-Notepad\\ as an attribute of a selector. The first character of the Notepad file name changes dynamically based on the .txt file used to open the file. If the developer wants the selector to identify the



Notepad by everything but the first character, how should title be replaced?

- A. title=\\'* writtenNotes-Notepad\\'
- B. title=\\'?-Notepad\\'
- C. title=\\'? writtenNotes-Notepad\\'
- D. title=\\'*-Notepad\\'

Correct Answer: C

Reference: <https://forum.uipath.com/t/notepad-selector/121952/2>

[Latest UIPATH-ARDV1 Dumps](#)

[UIPATH-ARDV1 VCE Dumps](#)

[UIPATH-ARDV1 Study Guide](#)