



# VCS-274<sup>Q&As</sup>

Administration of Veritas NetBackup 7.7

## Pass Veritas VCS-274 Exam with 100% Guarantee

Free Download Real Questions & Answers **PDF** and **VCE** file from:

<https://www.geekcert.com/vcs-274.html>

100% Passing Guarantee  
100% Money Back Assurance

Following Questions and Answers are all new published by Veritas  
Official Exam Center

-  **Instant Download** After Purchase
-  **100% Money Back** Guarantee
-  **365 Days** Free Update
-  **800,000+** Satisfied Customers





### QUESTION 1

An administrator needs to duplicate a backup that completed successfully earlier that same day. How can this be accomplished?

- A. locate the original backup from NetBackup Management> Reports > Images on Media, right click and select duplicate
- B. locate the policy for the original backup and initiate a manual backup
- C. locate the original backup in the activity monitor, right click and select restart
- D. locate the original backup from NetBackup Management> Catalog, right click and select duplicate

Correct Answer: D

---

### QUESTION 2

What are two possible causes for job failure when a Windows policy is configured to use Accelerator? (Select two.)

- A. client-side deduplication is disabled
- B. use of the NTFS Change Journal is disabled
- C. the backup target is AdvancedDisk
- D. insufficient space in the NetBackup installation directory
- E. the policy lacks a forced rescan schedule

Correct Answer: CD

---

### QUESTION 3

An administrator must recover an expired image from a tape where only one remaining copy exists and there are other unexpired images on the tape.

How should the administrator ensure the image is retained?

- A. run the Images on Tape report
- B. run an import on the tape
- C. duplicate the unexpired images
- D. verify the tape

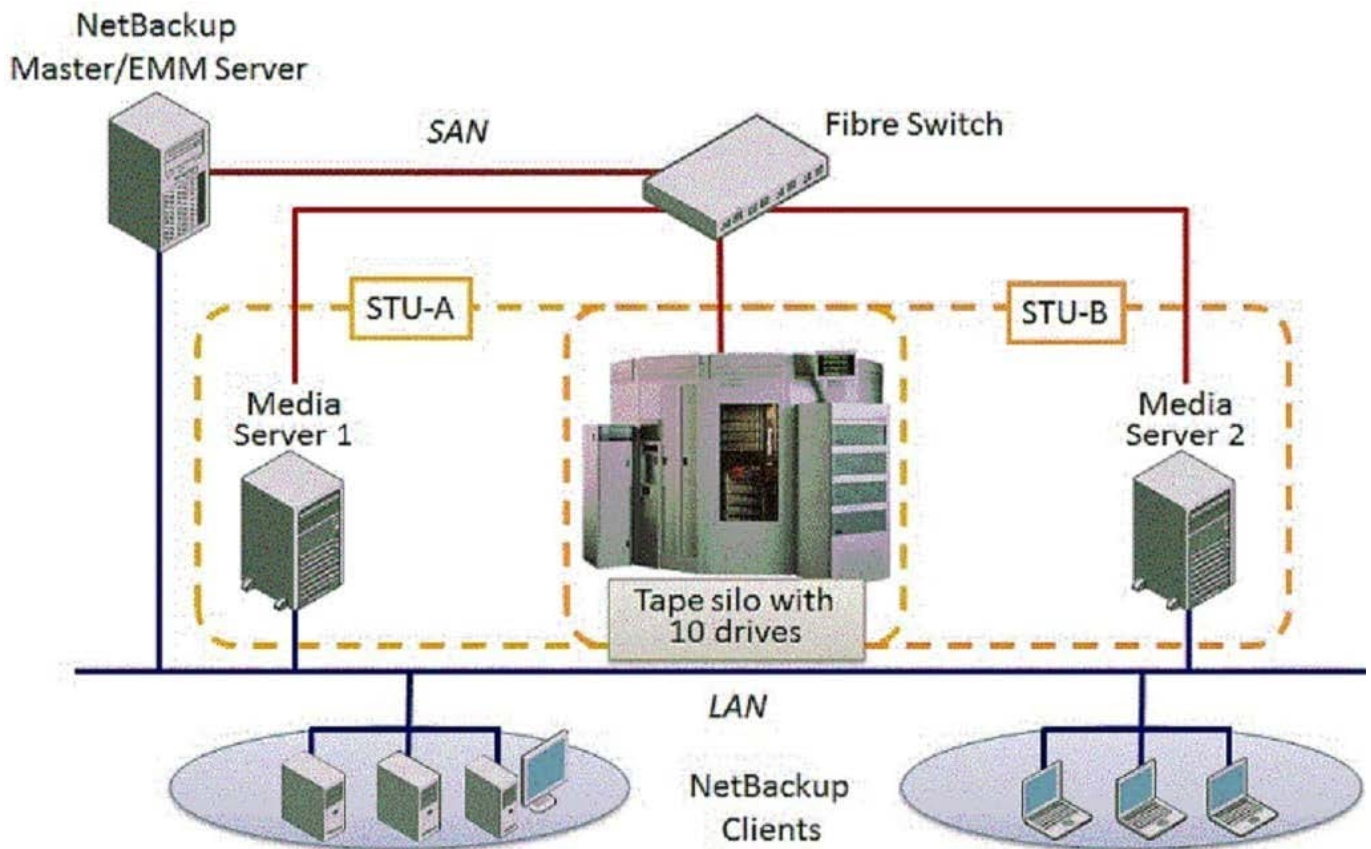
Correct Answer: B

---



#### QUESTION 4

Refer to the exhibit.



Two media servers, sharing a library with 10 tape drives, exist in the NetBackup 7.7 environment displayed in the exhibit. Both weekly full and daily differential incremental backups need to run for the clients and each schedule has a different retention period. Because of network topology, some clients back up to Media Server 1 and some back up to Media Server 2. The environment suffers from multiple status failures during the backup window. How can the administrator minimize the number of failures?

- A. increase the Media unmount delay
- B. configure media multiplexing
- C. enable backups to span tape media
- D. enable media sharing

Correct Answer: D

#### QUESTION 5

Which capability is provided by rebasing in an MSDP storage pool?

- A. garbage collection
- B. integrity checking



C. backup image defragmentation

D. image deletion

Correct Answer: C

[VCS-274 PDF Dumps](#)

[VCS-274 VCE Dumps](#)

[VCS-274 Exam Questions](#)