



# VCS-276<sup>Q&As</sup>

Administration of Veritas NetBackup 8.0

## Pass Veritas VCS-276 Exam with 100% Guarantee

Free Download Real Questions & Answers **PDF** and **VCE** file from:

<https://www.geekcert.com/vcs-276.html>

100% Passing Guarantee  
100% Money Back Assurance

Following Questions and Answers are all new published by Veritas  
Official Exam Center

- ⚙️ **Instant Download** After Purchase
- ⚙️ **100% Money Back** Guarantee
- ⚙️ **365 Days** Free Update
- ⚙️ **800,000+** Satisfied Customers





### QUESTION 1

To reduce network use by limiting the number of parallel backup streams, which cloud setting should be modified under the Scalable Storage host property?

- A. Metering > Metering interval
- B. Network Connections > Maximum concurrent jobs
- C. Throttling > Total available bandwidth
- D. Throttling > Sampling interval

Correct Answer: B

---

### QUESTION 2

Which two restore types must be initiated from a client system rather than the NetBackup Administration Console on the master server? (Select two.)

- A. Oracle
- B. MS-SharePoint
- C. MS-Exchange
- D. MS-SQL-Server
- E. VMware

Correct Answer: AE

---

### QUESTION 3

A NetBackup policy is configured to back up the following paths for a client:

D:\stage E:\data E:\home F:\production

Multi-streaming is enabled for the backups, and multiplexing is set to 4. Backup streams are running slowly.

Which step should the administrator consider to improve backup performance?

- A. increase the multiplexing level
- B. back up only one stream from each physical device on the client
- C. disable multistreaming
- D. increase the number of data buffers

Correct Answer: B

---

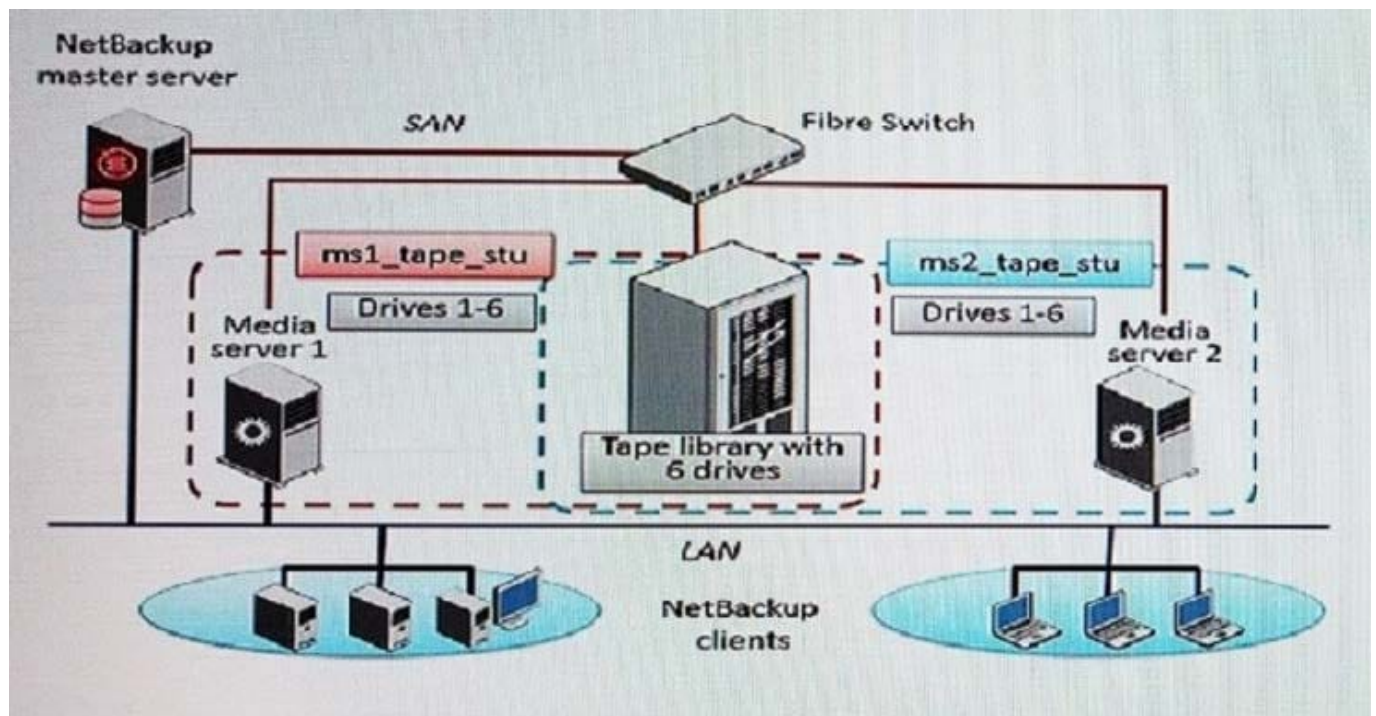


#### QUESTION 4

Refer to the exhibit.

Two media servers, sharing a library with 6 tape drives, exist in the NetBackup environment displayed in the exhibit. Both weekly full and daily differential incremental backups need to run for the clients and each schedule has a different retention period. Because of network topology, some clients back up to Media server 1 and some back up to Media server 2. The environment suffers from multiple status 96 failures during the backup window.

How can the administrator minimize the number of failures?



- A. increase the Media unmount delay
- B. configure media multiplexing
- C. enable backups to span tape media
- D. enable media sharing

Correct Answer: D

#### QUESTION 5

A NetBackup environment with a single tape storage unit is experiencing performance issues when running full backups of a Windows file server with over a million small files. Backups for all other clients on the same network are performing adequately.

What should the administrator modify to improve performance for the client?



- A. enable Windows Change Journal
- B. modify data buffer settings for the data path
- C. enable the Use Accelerator policy attribute
- D. use Flashbackup-Windows policy type

Correct Answer: D

[VCS-276 VCE Dumps](#)

[VCS-276 Practice Test](#)

[VCS-276 Braindumps](#)