



VCS-277^{Q&As}

Administration of Veritas NetBackup 8.0 and NetBackup Appliances 3.0

Pass Veritas VCS-277 Exam with 100% Guarantee

Free Download Real Questions & Answers **PDF** and **VCE** file from:

<https://www.geekcert.com/vcs-277.html>

100% Passing Guarantee
100% Money Back Assurance

Following Questions and Answers are all new published by Veritas
Official Exam Center

-  **Instant Download** After Purchase
-  **100% Money Back** Guarantee
-  **365 Days** Free Update
-  **800,000+** Satisfied Customers





QUESTION 1

After creating a NBU-Catalog backup policy, an administrator receives the following message:

DR file is on the same partition as your catalog and will be unusable in an actual disaster or disk failure.

Which two options are available to an administrator to ensure the DR file is available for future use? (Select two.)

- A. ensure the folder DR file is on a non-root volume
- B. ensure the DR file is created on a volume other than the NetBackup volume
- C. specify a user that has credentials to the volume that contains NetBackup binaries
- D. configure a valid email address of the administrator in the Send email option
- E. specify the NBU-Catalog backup policy as a critical policy

Correct Answer: BD

QUESTION 2

The MSDP catalog on a Media Server has become corrupted.

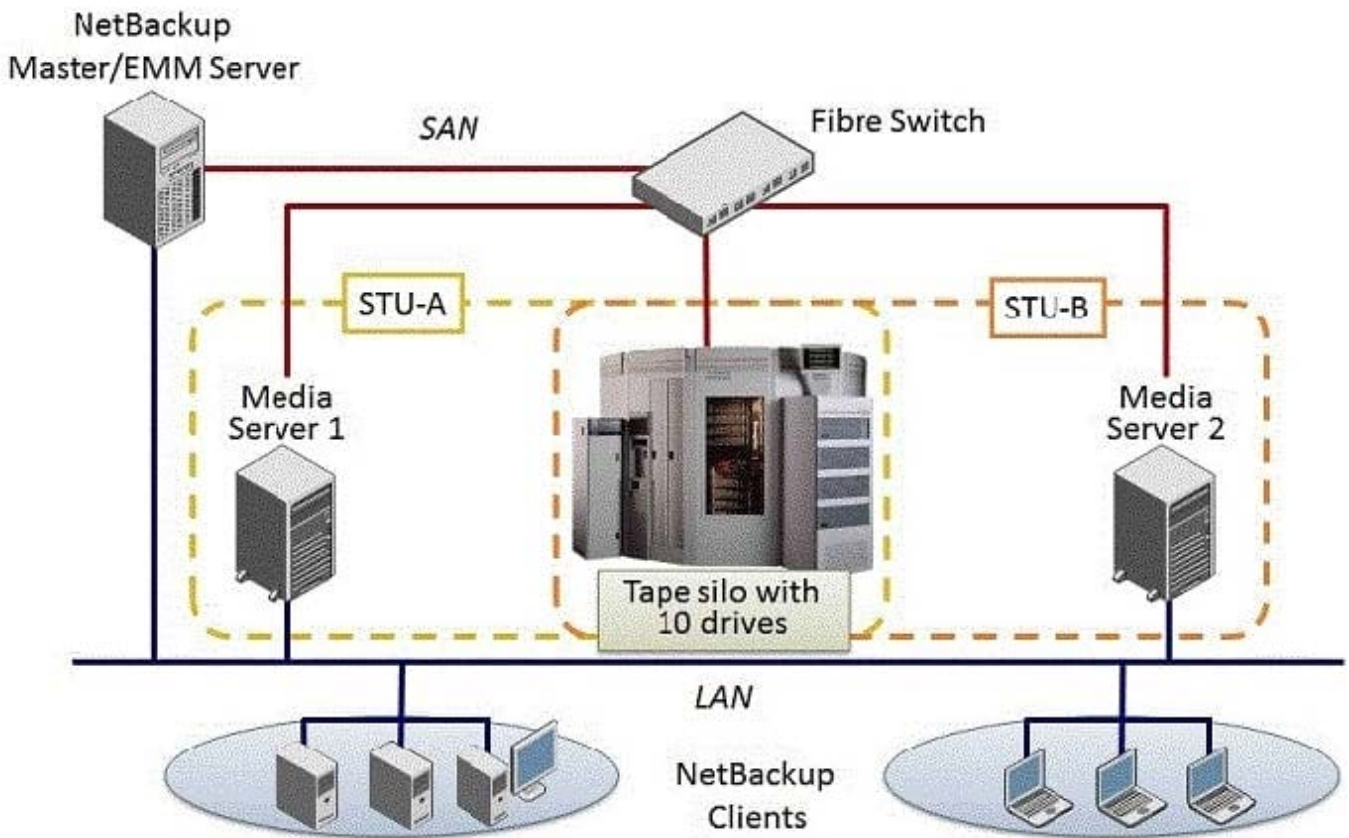
Which two methods are available to bring the MSDP pool back online? (Select two.)

- A. restore the MSDP catalog from the NetBackup catalog backup
- B. recover the MSDP catalog from the MSDP catalog backup
- C. repair the MSDP catalog using the crchk tool
- D. restore the MSDP catalog from an MSDP catalogshadow copy
- E. repair the MSDP catalog using the recoverCR tool

Correct Answer: BD

QUESTION 3

Refer to the exhibit.



Two media servers, sharing a library with 10 tape drives, exist in the NetBackup 8.0 environment displayed in the exhibit. Both weekly full and daily differential incremental backups need to run for the clients and each schedule has a different retention period. Because of network topology, some clients back up to Media Server 1 and some back up to Media Server 2. The environment suffers from multiple status 96 failures during the backup window.

How can the administrator minimize the number of failures?

- A. increase the Media unmount delay
- B. configure media multiplexing
- C. enable backups to span tape media
- D. enable media sharing

Correct Answer: D

QUESTION 4

Refer to the exhibit.

A backup job configured with a retention level of 2 and Policy volume pool set to the server_tapes is failing due to Status Code 96: Unable to allocate media for backup. See the output of the available_media command below:



media ID	media type	robot type	robot #	robot slot	side/face	ret level	size KBytes	status/multiplexed
NetBackup pool								
E02002	HCART2	TLD	0	2	-	2	819552	ACTIVE
E02003	HCART2	TLD	0	3	-	-	-	AVAILABLE
None pool								
C11201	HC_CLN	TLD	0	22	-	-	-	AVAILABLE
scratch_pool pool								
server_tapes pool								
E02007	HCART2	TLD	0	7	-	1	16416	ACTIVE
E02008	HCART2	TLD	0	8	-	3	819552	ACTIVE
E02006	HCART2	TLD	0	6	-	1	606496	FROZEN
E02005	HCART2	TLD	0	5	-	1	4081344	FULL
E02004	HCART2	TLD	0	4	-	2	4081344	FULL/FROZEN

Which task in the NetBackup Administration Console should the administrator perform to resolve the status code 96 error?

- A. Change volume C11201 to the scratch_pool volume pool
- B. Change volume E02002 to the scratch_pool volume pool
- C. Change volume E02004 to the scratch_pool volume pool
- D. Change volume E02003 to the scratch_pool volume pool

Correct Answer: C

QUESTION 5

Which feature is enabled after adding a master server to the Trusted Master Servers tab?

- A. backup of clients in other master server domains
- B. remote console to another master server
- C. targeted Auto Image Replication
- D. remote catalog backups

Correct Answer: C

[VCS-277 PDF Dumps](#)

[VCS-277 VCE Dumps](#)

[VCS-277 Exam Questions](#)