



# VCS-279<sup>Q&As</sup>

Administration of Veritas NetBackup 8.1.2 and NetBackup Appliances  
3.1.2

**Pass Veritas VCS-279 Exam with 100% Guarantee**

Free Download Real Questions & Answers **PDF** and **VCE** file from:

<https://www.geekcert.com/vcs-279.html>

100% Passing Guarantee  
100% Money Back Assurance

Following Questions and Answers are all new published by Veritas  
Official Exam Center

-  **Instant Download** After Purchase
-  **100% Money Back** Guarantee
-  **365 Days** Free Update
-  **800,000+** Satisfied Customers





#### QUESTION 1

Which port is used by Smart Meter?

- A. 22
- B. 443
- C. 1556
- D. 21

Correct Answer: B

---

#### QUESTION 2

Which command should an administrator run on each appliance as part of completing the pre-upgrade tasks?

- A. Support > Cleanup
- B. Manage > Software > UpgradeStatus
- C. Support > Test Software
- D. Manage > NetBackupCLI > List

Correct Answer: B

---

#### QUESTION 3

Where can an administrator add or list the service providers for cloud storage?

- A. NetBackup Management > Host Properties > Media Servers > Scalable Storage
- B. NetBackup Management > Host Properties > Master Servers > Scalable Storage
- C. NetBackup Management > Host Properties > Master Servers > Cloud Storage
- D. NetBackup Management > Host Properties > Media Servers > Cloud Storage

Correct Answer: C

---

#### QUESTION 4

An administrator configures a policy to perform file system backups of multiple client systems using the "Allow multiple data streams" feature. All other policy attributes are at default settings.

Which master server host property must be configured to enable the backup job from all clients to run concurrently?

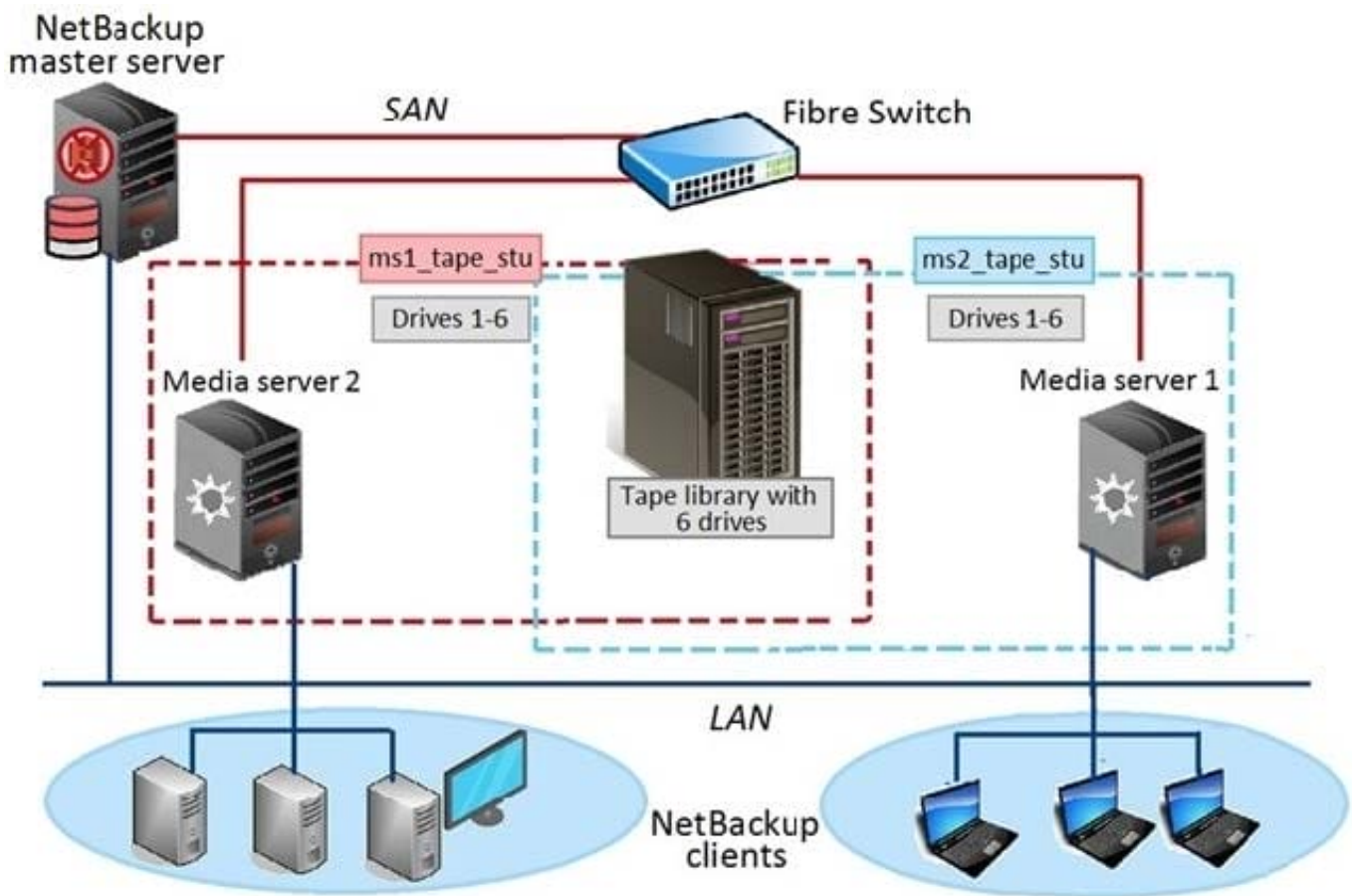


- A. Policy storage unit > Maximum concurrent jobs
- B. Global Attributes > Maximum jobs per client
- C. Client Attributes > Maximum data streams
- D. Policy storage unit > Enable multiplexing

Correct Answer: B

### QUESTION 5

Refer to the exhibit.



Two media servers, sharing a library with 6 tape drives, exist in the NetBackup environment displayed in the exhibit. Both weekly Full and daily Differential Incremental backups need to run for the clients and each schedule has a different retention period. Because of network topology, some clients back up to Media server 1 and some back up to Media server 2. The environment suffers from multiple status 96 failures during the backup window.

How can the administrator minimize the number of failures?

- A. increase the "Media unmount delay"
- B. configure media multiplexing



C. enable backups to span tape media

D. enable media sharing

Correct Answer: D

[VCS-279 PDF Dumps](#)

[VCS-279 Practice Test](#)

[VCS-279 Exam Questions](#)