



100-105^{Q&As}

Interconnecting Cisco Networking Devices Part 1 (ICND1)

Pass Cisco 100-105 Exam with 100% Guarantee

Free Download Real Questions & Answers **PDF** and **VCE** file from:

<https://www.geekcert.com/100-105.html>

100% Passing Guarantee
100% Money Back Assurance

Following Questions and Answers are all new published by Cisco
Official Exam Center

- ⚙️ **Instant Download** After Purchase
- ⚙️ **100% Money Back** Guarantee
- ⚙️ **365 Days** Free Update
- ⚙️ **800,000+** Satisfied Customers





QUESTION 1

In which two circumstances are private IPv4 addresses appropriate? (Choose two)

- A. on internal hosts that stream data solely to external resources
- B. on hosts that communicates only with other internal hosts
- C. on the public-facing interface of a firewall
- D. on hosts that require minimal access to external resources
- E. to allow hosts inside an enterprise to communicate in both directions with hosts outside the enterprise

Correct Answer: BD

QUESTION 2

All protocols on a network are using their default administrative distances with no redistribution. In which two different ways can you modify them so that OSPF and RIPv2 learned routes are preferred over EIGRP-learned routes? (Choose two.)

- A. Change the OSPF administrative distance to 5.
- B. Change the RIP administrative distance to 70.
- C. Change the EIGRP administrative distance to 70.
- D. Change the RIP administrative distance to 100.
- E. Change the EIGRP administrative distance to 100.

Correct Answer: AB

QUESTION 3

Which protocol allows VLANs to be dynamically configured between multiple switches?

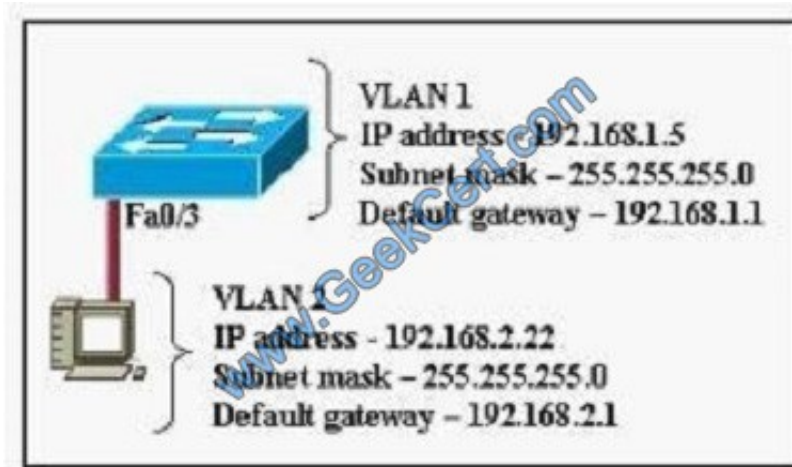
- A. IGMP
- B. STP
- C. VTP
- D. 802.1Q

Correct Answer: C

QUESTION 4



Refer to the exhibit. A host is connected to switch port fa0/3. The host and switch have been fully configured for IP connectivity as shown. However, the indicator LED on switch port fa0/3 is not on, and the host cannot communicate with any other hosts including those connected to VLAN 2 on the same switch. Based on the given information, what is the problem?



- A. switch port fa0/3 is not configured as a trunk port
- B. there is a bad cable
- C. the switch has been assigned an incorrect subnet mask
- D. switch port fa0/3 has been blocked by STP
- E. the switch and the host must be in the same subnet

Correct Answer: B

QUESTION 5

DRAG DROP Drag and drop the show cdp commands from the top onto the output they generate below

Select and Place:



show cdp neighbor detail	show cdp neighbor ethernet 1/1	show cdp	show cdp traffic												
command 1	Global CDP information: Sending CDP packets every 60 seconds Sending a holdtime value of 180 seconds Sending CDPv2 advertisements is enabled														
command 2	CDP counters: Total packets output: 19, Input: 16 Hdr syntax: 0, Chksum error: 0, Encaps failed: 0 No memory: 0, Invalid packet: 0, Fragmented: 0 CDP version 1 advertisements output: 0, Input: 0 CDP version 2 advertisements output: 19, Input: 16														
command 3	Device ID: R2 Entry address(es): IP address: 192.168.1.2 Platform: Cisco 7206VXR, Capabilities: Router Interface: Ethernet1/1, Port ID (outgoing port): Ethernet1/1 Holdtime: 174 Version: Cisco IOS Software, 7200 Software (C7200-ADVIPSERVICESK9-M), Version 12.4(2)T, RELEASE SOFTWARE (fc1) Advertisement version: 2 Duplex: Half														
command 4	Capability Codes: R – Router, T – Trans Bridge, B – Source Route Bridge S – Switch, H – Host, I – IGMP, r – Repeater <table><tr><th>Device ID</th><th>Local Interface</th><th>Holdtime</th><th>Capability</th><th>Platform</th><th>Port ID</th></tr><tr><td>R2</td><td>Eth 1/1</td><td>162</td><td>R</td><td>7206VXR</td><td>Eth 1/1</td></tr></table>			Device ID	Local Interface	Holdtime	Capability	Platform	Port ID	R2	Eth 1/1	162	R	7206VXR	Eth 1/1
Device ID	Local Interface	Holdtime	Capability	Platform	Port ID										
R2	Eth 1/1	162	R	7206VXR	Eth 1/1										

Correct Answer:



show cdp

Global CDP information:
Sending CDP packets every 60 seconds
Sending a holdtime value of 180 seconds
Sending CDPv2 advertisements is enabled

show cdp traffic

CDP counters:
Total packets output: 19, Input: 16
Hdr syntax: 0, Chksum error: 0, Encaps failed: 0
No memory: 0, Invalid packet: 0, Fragmented: 0
CDP version 1 advertisements output: 0, Input: 0
CDP version 2 advertisements output: 19, Input: 16

show cdp neighbor detail

Device ID: R2
Entry address(es):
IP address: 192.168.1.2
Platform: Cisco 7206VXR, Capabilities: Router
Interface: Ethernet1/1, Port ID (outgoing port): Ethernet1/1
Holdtime: 174
Version:
Cisco IOS Software, 7200 Software (C7200-ADVIPSERVICESK9-M),
Version 12.4(2)T, RELEASE SOFTWARE (fc1)
Advertisement version: 2
Duplex: Half

show cdp neighbor
ethernet 1/1

Capability Codes: R – Router, T – Trans Bridge, B – Source Route Bridge
S – Switch, H – Host, I – IGMP, r – Repeater

Device ID	Local Interface	Holdtime	Capability	Platform	Port ID
R2	Eth 1/1	162	R	7206VXR	Eth 1/1

QUESTION 6

Click on the correct location or locations in the exhibit.

**Instructions**

You can click on the grey buttons below to view the different windows.

Each of the windows can be minimized by clicking on the [-]. You can also reposition a window by dragging it by the title bar.

The "Tab" key and most commands that use the "Control" or "Escape" keys are not supported and are not necessary to complete this simulation.

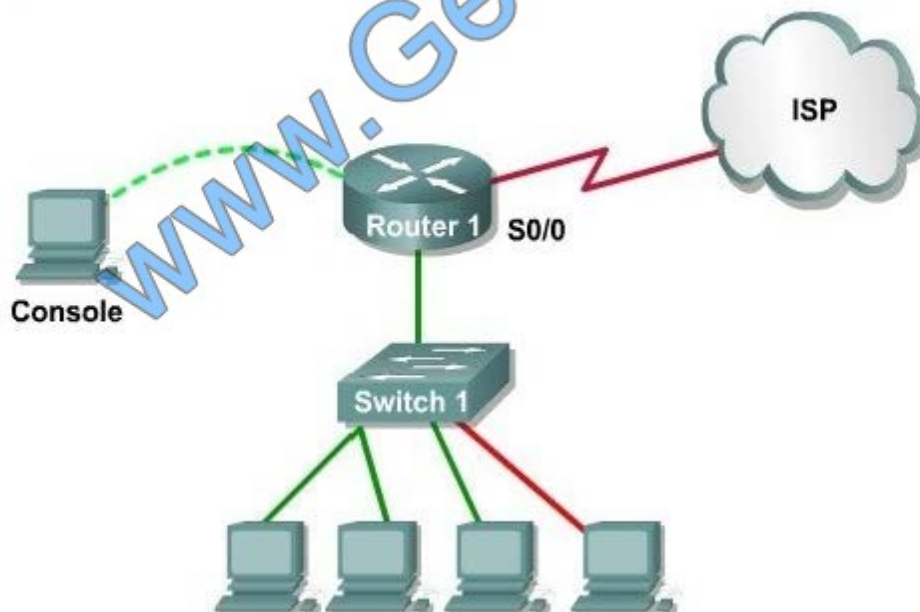
Scenario

This task requires the use of various **show** commands from the CLI of Router1 to answer four multiple-choice questions. This task does **not** require any configuration.

NOTE: The show running-configuration and the show startup-configuration commands have been disabled in this simulation.

To access the multiple-choice questions, click on the numbered boxes on the right of the top panel.

There are 4 multiple-choice questions with this task. Be sure to answer all 4 questions before leaving this item.

Topology

What is the bandwidth on the WAN interface of Router?

- A. 16 Kbit/sec
- B. 32 Kbit/sec
- C. 64 Kbit/sec
- D. 128 Kbit/sec



E. 512 Kbit/sec

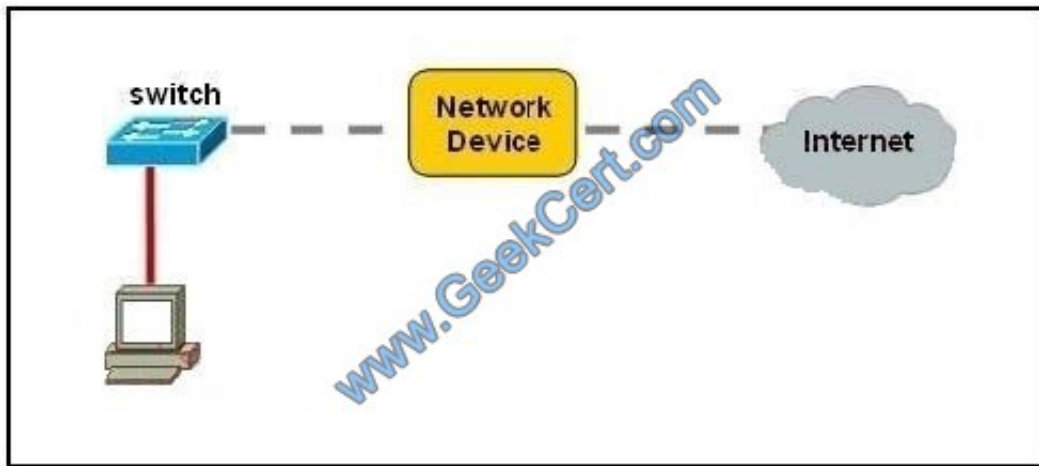
F. 1544 Kbit/sec

Correct Answer: E

Use the "show interfaces serial 0/0" command

QUESTION 7

Refer to the exhibit.



A network device needs to be installed in the place of the icon labeled Network Device to accommodate a leased line attachment to the Internet. Which network device and interface configuration meets the minimum requirements for this installation?

- A. a router with two Ethernet interfaces
- B. a switch with two Ethernet interfaces
- C. a router with one Ethernet and one serial interface
- D. a switch with one Ethernet and one serial interface
- E. a router with one Ethernet and one modem interface

Correct Answer: C

Only a router can terminate a leased line attachment access circuit, and only a router can connect two different IP networks. Here, we will need a router with two interfaces, one serial connection for the line attachment and one Ethernet interface to connect to the switch on the LAN.

QUESTION 8

After the shutdown command has been issued on the serial 0/0 interface, what will be displayed when the show interface serial 0/0 command is issued by the administrator?



- A. Serial0/0 is administratively down, line protocol is down
- B. Serial0/0 is down, line protocol is down
- C. Serial0/0 is up, line protocol is down
- D. Serial0/0 is administratively down, line protocol is administratively down
- E. Serial0/0 is up, line protocol is up
- F. Serial0/0 is down, line protocol is up

Correct Answer: A

QUESTION 9

Which two statements about RIPv2 are true? (Choose two)

- A. It must be manually enabled after RIP is configured as the routing protocol
- B. It uses multicast address 224.0.0.2 to share routing information between peers
- C. its default administrative distances 120
- D. It is a link-state routing protocol
- E. It is an EGP routing protocol

Correct Answer: AC

QUESTION 10

Under which circumstance should a network administrator implement only outgoing NAT towards an ISP?

- A. when traffic that originates inside the network must be routed to internal hosts
- B. when the network has few public IP addresses and many private IP addresses that require outside access
- C. when the network must route UDP traffic
- D. when traffic that originates outside the network must be routed to internal hosts

Correct Answer: B

QUESTION 11

Drag and Drop Question

Drag and drop the IPv6 IP addresses from the left onto the correct IPv6 address types on the right.

Select and Place:



..	modified EUI-64
2020:10D8:0:0:85AB:800:52:7348	multicast
D8:FC:93:FF:FE:D8:05:0A	unicast
FF01::1	unspecified

Correct Answer:

	D8:FC:93:FF:FE:D8:05:0A
	FF01::1
	2020:10D8:0:0:85AB:800:52:7348
	..

QUESTION 12

Which component of an Ethernet frame supports error detection?

- A. EtherType
- B. frame check sequence
- C. 802.1Q tag
- D. preamble

Correct Answer: B

QUESTION 13

Refer to the exhibit.



```
interface vlan 1
ip address 192.168.17.253 255.255.255.240
no shutdown
exit
ip default-gateway 192.168.17.1
line vty 0 15
password cisco
login
exit
```

A network administrator has configured a Catalyst 2950 switch for remote management by pasting into the console the configuration commands that are shown in the exhibit. However, a Telnet session cannot be successfully established from a remote host. What should be done to fix this problem?

- A. Change the first line to interface fastethernet 0/1.
- B. Change the first line to interface vlan 0/1.
- C. Change the fifth line to ip default-gateway 192.168.17.241.
- D. Change the fifth line to ip route 0.0.0.0 0.0.0.0 192.168.17.1.
- E. Change the sixth line to line con 0.

Correct Answer: C

The default gateway for remote session is 192.168.17.241 and not the one given in the exhibit.

QUESTION 14

What is the purpose of the switchport command?

Switch(config-if)# switchport port-security maximum 1 Switch(config-if)# switchport port-security mac-address 0018.DE8B.4BF8

- A. It ensures that only the device with the MAC address 0018.DE8B.4BF8 will be able to connect to the port that is being configured.
- B. It informs the switch that traffic destined for MAC address 0018.DE8B.4BF8 should only be sent to the port that is being configured.
- C. It will act like an access list and the port will filter packets that have a source or destination MAC of 0018.DE8B.4BF8.
- D. The switch will shut down the port of any traffic with source MAC address of 0018.DE8B.4BF8.

Correct Answer: A



QUESTION 15

What is the maximum number of bits that can be borrowed to create subnets if a Class B network address is being used?

- A. 2
- B. 6
- C. 8
- D. 14
- E. 16

Correct Answer: D

[100-105 Practice Test](#)

[100-105 Study Guide](#)

[100-105 Braindumps](#)



To Read the [Whole Q&As](#), please purchase the [Complete Version](#) from [Our website](#).

Try our product !

100% Guaranteed Success

100% Money Back Guarantee

365 Days Free Update

Instant Download After Purchase

24x7 Customer Support

Average 99.9% Success Rate

More than 800,000 Satisfied Customers Worldwide

Multi-Platform capabilities - Windows, Mac, Android, iPhone, iPod, iPad, Kindle

We provide exam PDF and VCE of Cisco, Microsoft, IBM, CompTIA, Oracle and other IT Certifications.
You can view Vendor list of All Certification Exams offered:

<https://www.geekcert.com/allproducts>

Need Help

Please provide as much detail as possible so we can best assist you.

To update a previously submitted ticket:



 One Year Free Update Free update is available within One Year after your purchase. After One Year, you will get 50% discounts for updating. And we are proud to boast a 24/7 efficient Customer Support system via Email.	 Money Back Guarantee To ensure that you are spending on quality products, we provide 100% money back guarantee for 30 days from the date of purchase.	 Security & Privacy We respect customer privacy. We use McAfee's security service to provide you with utmost security for your personal information & peace of mind.
---	---	--

Any charges made through this site will appear as Global Simulators Limited.

All trademarks are the property of their respective owners.

Copyright © geekcert, All Rights Reserved.