



1Y0-301^{Q&As}

Deploying Citrix XenDesktop 7.6 Solutions

Pass Citrix 1Y0-301 Exam with 100% Guarantee

Free Download Real Questions & Answers **PDF** and **VCE** file from:

<https://www.geekcert.com/1y0-301.html>

100% Passing Guarantee
100% Money Back Assurance

Following Questions and Answers are all new published by Citrix
Official Exam Center

- ⚙️ **Instant Download** After Purchase
- ⚙️ **100% Money Back** Guarantee
- ⚙️ **365 Days** Free Update
- ⚙️ **800,000+** Satisfied Customers





QUESTION 1

Which two components are required to run the Streamed VM Setup Wizard in the Provisioning Services Console to create a Windows 7 virtual machine? (Choose two.)

- A. A vDisk in Standard mode
- B. XenDesktop Controller address
- C. Windows 7 virtual machine template
- D. A resealed Windows 7 master image

Correct Answer: AC Section: (none)

QUESTION 2

A Citrix Engineer needs to restart the _____ after enabling offline database support in the Provisioning Services Console. (Choose the correct option to complete the sentence.)

- A. SQL Service
- B. target devices
- C. DHCP Service
- D. Stream Service

Correct Answer: D Section: (none)

QUESTION 3

CORRECT TEXT

Scenario: A Citrix Engineer at CCH needs to provide Help Desk administrators with delegated administrative rights without impacting site functionality.

Help Desk administrators need permissions to do the following:

Perform any tasks within Citrix Director Perform power operations on Windows Desktop machines Add and remove machines and applications from Maintenance Mode View Site Logs View Machine Catalogs View Policies

Permissions should be specifically granted to the CCH\HelpDeskAdmins group. Tasks:

1.

Create a custom role for Help Desk administrators.

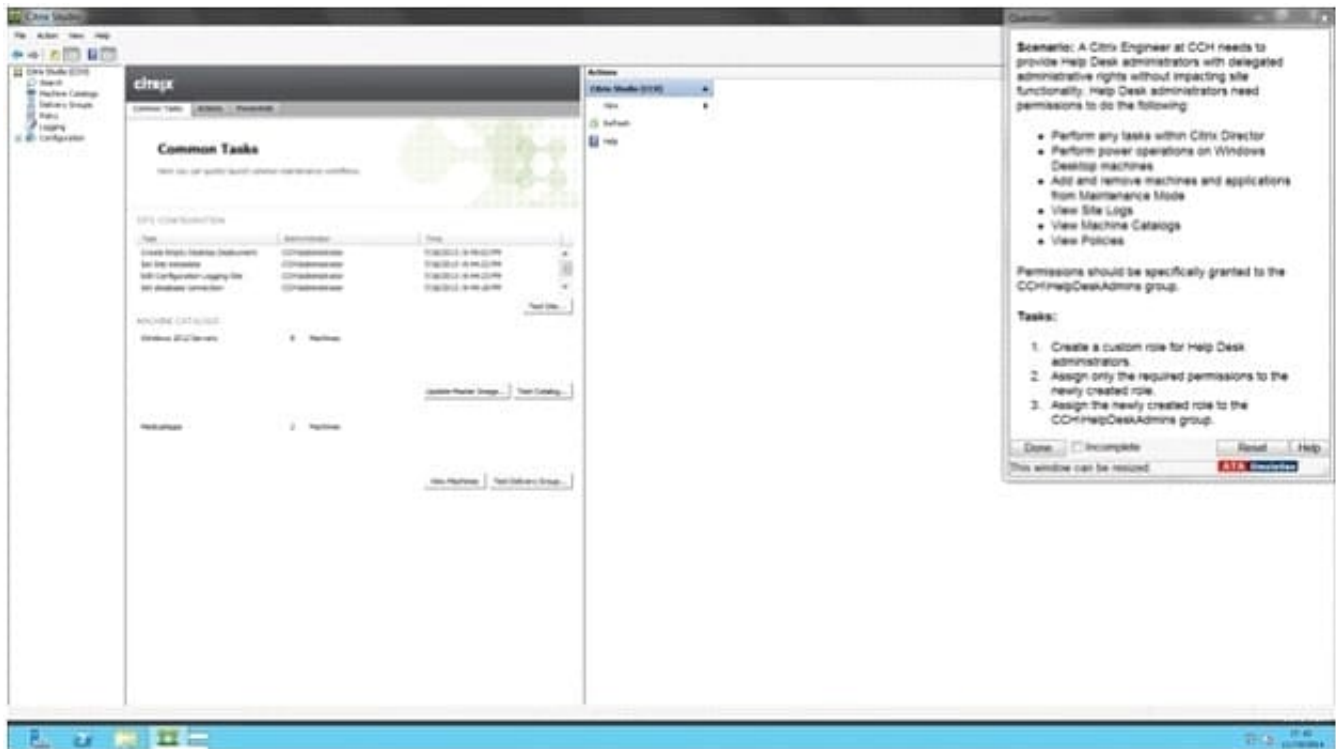
2.

Assign only the required permissions to the newly created role.



3.

Assign the newly created role to the CCH\HelpDeskAdmins group.



A.

Correct Answer: A Section: (none)

Answer: Find the solution with all steps below.

To create a custom role

In Studio, click Configuration > Administrators in the left pane, then click the Roles tab in the middle pane.

A list of existing roles appears.

In the Actions pane, click Create new Role.

Type a name and description for the role.

HelpDeskAdmins

For each object type that you want this role to have permissions for, select the object type, then select the permissions.



- Perform any tasks within Citrix Director
- Perform power operations on Windows Desktop machines
- Add and remove machines and applications from Maintenance Mode
- View Site Logs
- View Machine Catalogs
- View Policies

Click Save.

To create a scope

In Studio, click Configuration > Administrators in the left pane, then click the Scopes tab in the middle pane. A list of existing scopes appears.

In the Actions pane, click Create new Scope.

Type a name (for example, '\\Sales\\') and a description (for example, '\\Delivery Groups used by Sales\\') for the scope.

HelpDeskAdmins

Select object types or specific objects:

Click Save.

QUESTION 4

Scenario: A XenDesktop deployment with 200 virtual desktops has a host connection to a single XenServer pool configured for thin provisioning. A Citrix Engineer has been instructed to implement IntelliCache.

Which steps must the engineer take to meet the requirements stated in the scenario?

- A. Modify the existing host connection and enable IntelliCache.
- B. Create a new resource using the existing host connection and enable IntelliCache.
- C. Delete the existing resource, create a new one with the same name and enable IntelliCache.
- D. Delete the existing host connection, create a new connection to the same pool and enable IntelliCache.

Correct Answer: B Section: (none)

QUESTION 5

Which Group Policy setting should a Citrix Engineer set during the installation of Provisioning Services (PVS) to help prevent trust relationship failures between PVS targets and the Active Directory domain?

- A. Enable Windows NTP Client



- B. Disable NTLMv2 authentication
- C. Disable machine account password changes
- D. Allow cryptography algorithms compatible with Windows NT 4.0

Correct Answer: C Section: (none)

QUESTION 6

Scenario: Citrix Profile Management is deployed in a XenDesktop environment. A Citrix Engineer set up group policies and configured the .INI file on Desktop OS machines for Citrix Profile Management.

What will take precedence if there is a conflict?

- A. Local Policy
- B. Group Policy
- C. UPMPolicyDefaults_All.ini
- D. XenDesktop Policy set in Citrix Studio

Correct Answer: B Section: (none)

QUESTION 7

Scenario: A Citrix Engineer needs to deploy Citrix Receiver using a custom Client Name value. The engineer uses the install command CitrixReceiver /CLIENT_NAME=Terminal. A user later renames the computer and the custom client name is lost.

Which additional install parameter could the engineer have used to prevent the custom client name from being lost?

- A. SELFSERVICEMODE=FALSE
- B. ALLOW_CLIENTHOSTEDAPPSURL
- C. CLIENT_NAME=%COMPUTERNAME%
- D. ENABLE_DYNAMIC_CLIENT_NAME=NO

Correct Answer: D Section: (none)

QUESTION 8

A Citrix Engineer must change the write cache method from '\\Cache on device hard drive\\' to '\\Cache in device RAM with overflow on hard disk\\'.

To assist in determining the appropriate amount of RAM cache required, what would the engineer need to check to



determine the current write cache size?

- A. The size of the local pagefile
- B. The size of the writecache file in the vDisk store
- C. The size of the .vdiskcache file on the device hard disk
- D. The size of the RAM and Pagefile combined in Task Manager

Correct Answer: C Section: (none)

QUESTION 9

Which XenDesktop feature will reduce the likelihood of application or desktop disruption during a database outage?

- A. Session lingering
- B. Session Reliability
- C. Connection leasing
- D. Session pre-launch

Correct Answer: C Section: (none)

QUESTION 10

Scenario: After configuring high availability for StoreFront servers on the same VLAN, users report intermittent issues accessing Receiver for Web. The NetScaler monitors show both StoreFront servers in an UP state.

What could be causing the issue?

- A. The Citrix XML monitor is misconfigured.
- B. NetScaler is using a ping monitor to check the status of the StoreFront servers.
- C. The StoreFront servers are configured for SSL, but NetScaler is using HTTP monitor.
- D. Routing issues are preventing NetScaler from reaching one of the StoreFront servers.

Correct Answer: B Section: (none)

QUESTION 11

When should a Citrix Engineer implement the Remote PC Access FlexCast model?

- A. When users need to bring their own non-domain device (BYOD).
- B. When users need to use the Remote Desktop Protocol (RDP) to connect to existing desktops.



- C. When users need to connect to existing desktops in the environment with specialized hardware installed.
- D. When users need to connect to WiFi-connected laptops in the environment with specialized software installed.

Correct Answer: C Section: (none)

QUESTION 12

Which step can a Citrix Engineer take to reduce logon times when using Citrix Profile Management?

- A. Use offline files
- B. Use Personal vDisk
- C. Disable profile streaming
- D. Implement folder redirection

Correct Answer: D Section: (none)

QUESTION 13

Which two other database server permissions are required in a Provisioning Services farm in addition to \\execute permissions on the stored procedures\\'? (Choose two.)

- A. db_owner
- B. db_datawriter
- C. db_datareader
- D. db_accessadmin
- E. db_securityadmin

Correct Answer: BC Section: (none)

QUESTION 14

Which two settings could a Citrix Engineer configure on NetScaler Gateway to ensure that connections are utilizing ICA Proxy? (Choose two.)

- A. SSL Bridge
- B. Basic Mode
- C. SSL Offload
- D. Content Switching
- E. SmartAccess Mode



Correct Answer: BE Section: (none)

QUESTION 15

CORRECT TEXT

Scenario: A Citrix Engineer at CCH needs to provide owners of a specific application with delegated administrative rights to perform specific tasks on their application and the servers hosting their application. The application owners need permissions to do the following: Add and remove the application from a Delivery Group Create and delete applications Edit application properties Add and remove the application from Maintenance Mode Perform power operations on Windows Server machines

Permissions should be specifically granted to the CCH\MedAppAdmins group and assigned to a custom scope.

Tasks:

1.

Create a custom role named MedAppAdmins.

2.

Assign only the required permissions to the newly created role.

3.

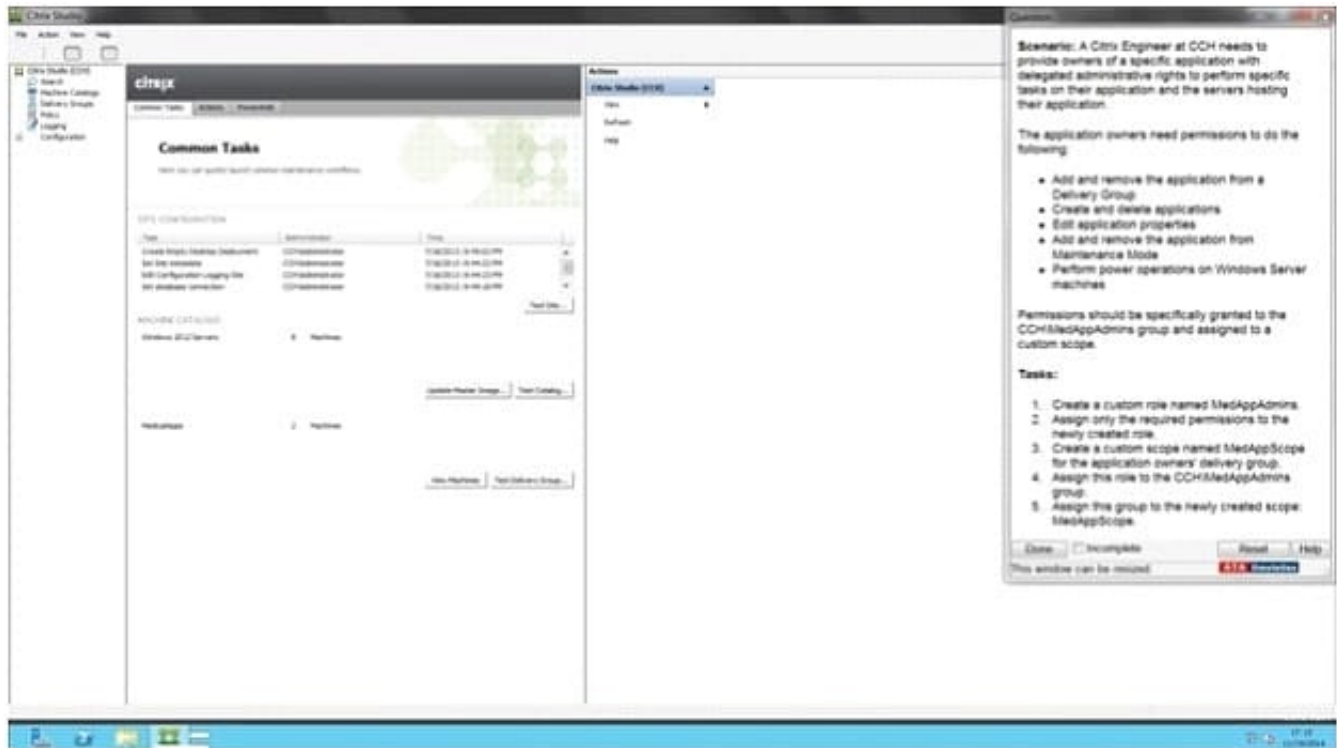
Create a custom scope named MedAppScope for the application owners\' delivery group.

4.

Assign this role to the CCH\MedAppAdmins group.

5.

Assign this group to the newly created scope: MedAppScope.



A.

Correct Answer: A Section: (none)

Answer: Find the solution with all steps below. To create a custom role

1.

In Studio, click Configuration > Administrators in the left pane, then click the Roles tab in the middle pane. A list of existing roles appears.

2.

In the Actions pane, click Create new Role.

3.

Type a name and description for the role.

4.

For each object type that you want this role to have permissions for, select the object type, then select the permissions.

- Add and remove the application from a Delivery Group
- Create and delete applications
- Edit application properties
- Add and remove the application from Maintenance Mode
- Perform power operations on Windows Server machines



1. Click Save. To create a scope

1.

In Studio, click Configuration > Administrators in the left pane, then click the Scopes tab in the middle pane. A list of existing scopes appears.

2.

In the Actions pane, click Create new Scope.

3.

Type a name (for example, '\\Sales\\') and a description (for example, '\\Delivery Groups used by Sales\\') for the scope.

4.

Select object types or specific objects:

a.

To select all objects of a particular type (for example, Delivery Groups), select the object type.

b.

To select specific objects, expand the type, then select the individual objects (for example, individual Delivery Groups used by the Sales team).

5. Click Save.

[1Y0-301 PDF Dumps](#)

[1Y0-301 Study Guide](#)

[1Y0-301 Exam Questions](#)