



351-080^{Q&As}

CCIE Data Center Written

Pass Cisco 351-080 Exam with 100% Guarantee

Free Download Real Questions & Answers **PDF** and **VCE** file from:

<https://www.geekcert.com/351-080.html>

100% Passing Guarantee
100% Money Back Assurance

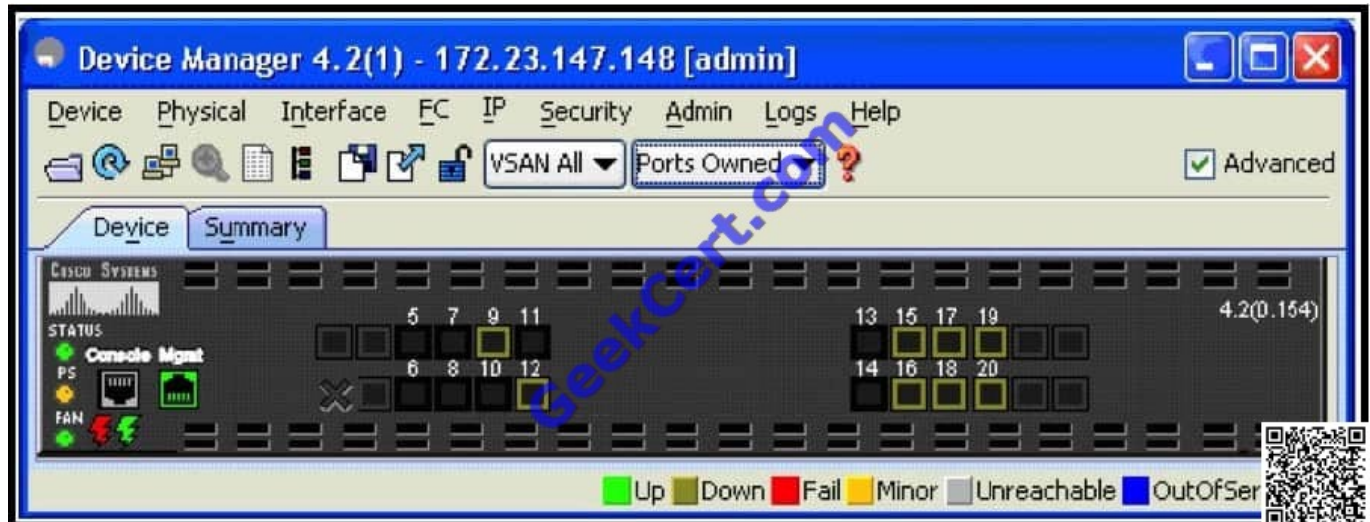
Following Questions and Answers are all new published by Cisco
Official Exam Center

- ⚙️ **Instant Download** After Purchase
- ⚙️ **100% Money Back** Guarantee
- ⚙️ **365 Days** Free Update
- ⚙️ **800,000+** Satisfied Customers



**QUESTION 1**

Refer to the exhibit.



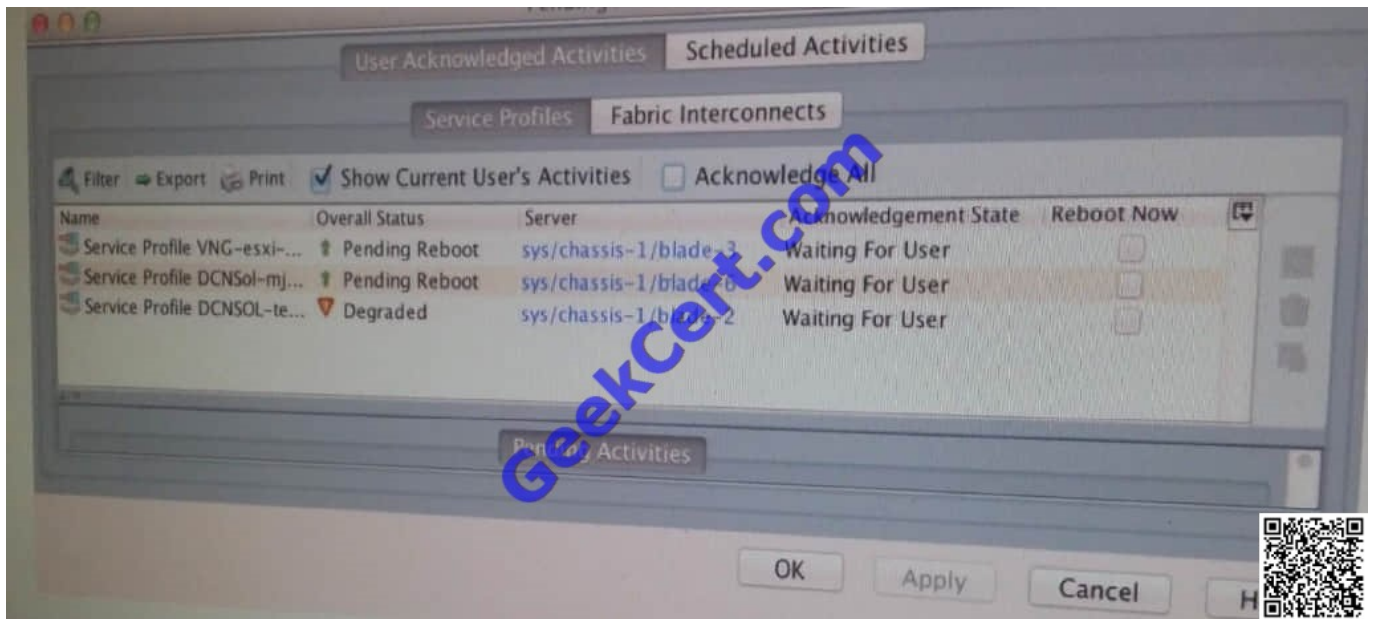
How is the VLAN configuration accomplished in the Device Manager?

- A. This configuration is done under the IP selection.
- B. This configuration is done under Interface selection.
- C. This configuration cannot be done in Device Manager.
- D. This configuration is done by clicking the VSAN drop-down list and choosing VLAN All.

Correct Answer: C

QUESTION 2

Refer to the exhibit.



Which statement is not true?

- A. Chassis 1 in blade 2 has a major fault.
- B. Those service profiles have a user acknowledge maintenance policy configured.
- C. If you check Acknowledge All and click Apply, the blades reload.
- D. Any user can acknowledge the reload

Correct Answer: D

Explanation: Ref: Cisco UCS Manager 2.2 Guide

QUESTION 3

In a virtual port channel (vPC) configuration, VRRP exhibits which characteristic?

- A. VRRP does not work with vPC due to industry standard requirements
- B. VRRP works with vPC in traditional active/standby modes
- C. VRRP works with vPC in an active/active mode
- D. VRRP work with vPC as long as vPC peer-gateway is configured to address non- standard replies to the physical MAC address

Correct Answer: C

QUESTION 4

Which three statements best describe multicast operation on Cisco Nexus switches in a data center? (Choose three.)



- A. Cisco NX-OS Software does not support PIM dense mode.
- B. The command `ip multicast-routing` must be enabled in Cisco NX-OS Software before any multicast configuration is possible on the switch.
- C. PIM CLI configuration and verification commands are not available until you enable the PIM feature with the `feature pim` command.
- D. Cisco NX-OS Software supports multicast routing per Layer 3 VRF instance.
- E. The default PIM operational mode on the Cisco Nexus 7000 switch is SSM.

Correct Answer: ACD

QUESTION 5

When it comes to creating pooled WWN objects, it is important to understand that a Cisco UCS WWN pool can include only WWNNs or WWPNNs from which value of ranges?

- A. from 10:00:00:00:00:00:00:00 to 10:FF:FF:FF:FF:FF:FF:FF
- B. from 20:00:00:00:00:00:00:00 to 20:FF:FF:FF:FF:FF:FF:FF
- C. from 30:00:00:00:00:00:00:00 to 30:FF:FF:FF:FF:FF:FF:FF
- D. from 40:00:00:00:00:00:00:00 to 40:FF:FF:FF:FF:FF:FF:FF

Correct Answer: B

QUESTION 6

Regarding disk scrub, which two of these occur to the data on any local drives upon disassociation? (Choose two.)

- A. If disk scrub is enabled, all BIOS settings for the server are erased.
- B. If disk scrub is enabled, all the data access on any local drives is destroyed.
- C. If disk scrub is enabled, the LSI active RAID is destroyed but data is still preserved.
- D. If disk scrub is disabled, all data on any local drives is preserved, including the local storage configuration.
- E. If disk scrub is enabled, all data on any local drives is preserved, including the local storage configuration.

Correct Answer: BD

QUESTION 7

Refer to the exhibit.



```
IGMP Snooping information for vlan 1
IGMP snooping enabled
Optimised Multicast Flood (OMF) disabled
IGMP querier none
Switch-querier disabled
IGMPv3 Explicit tracking enabled
IGMPv2 Fast leave disabled
IGMPv1/v2 Report suppression enabled
IGMPv3 Report suppression disabled
Link Local Groups suppression enabled
Router port detection using PIM Hellos, IGMP Queries
Number of router-ports: 1
Number of groups: 0
VLAN vPC function enabled
Active ports:
  Eth1/32    Pol

IGMP Snooping information for vlan 106
IGMP snooping enabled
Optimised Multicast Flood (OMF) disabled
IGMP querier present, address: 7.7.7.1, version: 2,
i/f Pol
Switch-querier disabled
IGMPv3 Explicit tracking enabled
IGMPv2 Fast leave disabled
IGMPv1/v2 Report suppression enabled
IGMPv3 Report suppression disabled
Link Local Groups suppression enabled
Router port detection using PIM Hellos, IGMP Queries
Number of router-ports: 2
Number of groups: 0
VLAN vPC function enabled
Active ports:
  Pol

IGMP Snooping information for vlan 201
IGMP snooping disabled
Optimised Multicast Flood (OMF) disabled
IGMP querier none
Switch-querier disabled
IGMPv3 Explicit tracking enabled
IGMPv2 Fast leave disabled
IGMPv1/v2 Report suppression enabled
IGMPv3 Report suppression disabled
Link Local Groups suppression enabled
Router port detection using PIM Hellos, IGMP
Queries
Number of router-ports: 0
Number of groups: 0
VLAN vPC function disabled
Active ports:
  Pol Pol500
```



Which configuration command (or commands) will produce the output that is shown in the exhibit?

- A. no feature igmp
- B. no feature igmp snooping
- C. vlan 201 no ip igmp snooping
- D. vlan configuration 201 no ip igmp snooping
- E. interface vlan 201 no ip igmp snooping

Correct Answer: D

QUESTION 8

Where is a typical request in the Cisco UCS XML API placed in the data management engine, and, after the request is confirmed, what is updated?

- A. The request is placed in the transactor queue in FIFO order and the management information tree is updated.
- B. The request is placed in the replicator and persistifier and the store is updated.
- C. The request is placed in the data management engine and the application gateway is updated.
- D. The request is placed in the buffer queue and the commit buffer queue is updated.

Correct Answer: A



QUESTION 9

After configuring FabricPath, the following appears in the syslog:

%STP-2-L2GW_BACKBONE_BLOCK: L2 Gateway Backbone port inconsistency blocking port port-channel100 on VLAN0010.

What is the cause of this message?

- A. STP must be disabled; message indicates that STP is enabled.
- B. STP is misconfigured; root guard must be disabled.
- C. An inferior BPDU is received on a Cisco FabricPath edge port.
- D. A superior BPDU is received on a Cisco FabricPath edge port.

Correct Answer: D

QUESTION 10

Which two FEX connection modes are correct? (Choose two.)

- A. hard-pinning mode
- B. soft-pinning mode
- C. port channel mode
- D. physical-pinning mode
- E. vlan pinning mode

Correct Answer: AC

QUESTION 11

Consistency checks and compatibility checks are performed before a vPC is created. During a compatibility check, one vPC peer conveys configuration information to the other vPC peer to verify that vPC member ports can actually form a port channel. Which two statements about virtual port channel graceful consistency checks are true? (Choose two.)

- A. Graceful consistency check is enabled by default.
- B. When graceful consistency check is enabled, only the links on the secondary peer device are suspended.
- C. Graceful consistency check is disabled by default. To enable this feature, use the graceful consistency-check command under the vPC domain configuration mode.
- D. When graceful consistency check is enabled, only the inconsistent VLANs on the secondary peer device are suspended.



E. Graceful consistency check is disabled by default.

Correct Answer: AB

QUESTION 12

Which four statements about SNMP implementation on the Cisco Nexus 7000 Series switch are true? (Choose four.)

- A. Cisco NX-OS supports one instance of the SNMP per virtual device context.
- B. By default, Cisco NX-OS uses the default VDC for SNMP.
- C. SNMP supports multiple MIB module instances and maps them to logical network entities.
- D. SNMP is VRF aware. You can configure SNMP to use a particular VRF to reach the SNMP notification host receiver.
- E. Only SNMP version 3 is supported on NX-OS.
- F. Cisco NX-OS supports one instance of the SNMP per switch.
- G. Each VDC can have multiple SNMP sessions configured in it.

Correct Answer: ABCD

QUESTION 13

Which statement about soft pinning is incorrect?

- A. It is the default behaviour in Cisco UCS manager.
- B. When the VLAN validation fails, a VLAN mismatch fault with a severity of warning appears.
- C. Cisco UCS manager pins the vNIC to an uplink Ethernet port or port channel according to VLANmembership criteria.
- D. If no uplink Ethernet port or ether channel is configured with all VLANS on the vNIC, Cisco UCS manager drops the traffic for all of the VLANS on the vNIC.

Correct Answer: B

QUESTION 14

Refer to the exhibit.

```
UCS-B# scope eth-uplink
UCS-B /eth-uplink # scope fabric b
UCS-B /eth-uplink/fabric # create interface 2 1
UCS-B /eth-uplink/fabric/interface* # commit-buffer
```

Assume that the Cisco UCS 6200 Series Fabric Interconnects are equipped with 16 port expansion modules. What is



the impact of the last command in the exhibit?

- A. Fabric interconnect B will reboot.
- B. The expansion module on fabric interconnect B will reload.
- C. The command will generate an error.
- D. Both fabric A and B expansion modules will reload.
- E. The expansion module on fabric interconnect B will reload according to the maintenance policy that is set by Cisco UCS Manager.

Correct Answer: C

QUESTION 15

Overlay Transport Virtualization (OTV) overlay interface is a logical multi access and multicast-capable interface that must be explicitly defined by the user and where the entire OTV configuration is applied.

Which statements are true about OTV overlay interface? (Choose two.)

- A. When an OTV edge device receives a Layer 2 frame destined for a remote data center site, the frame is logically forwarded to the overlay interface.
- B. The OTV edge device performs the dynamic OTV encapsulation on the Layer 2 packet and sends it to the join interface toward the routed domain.
- C. When the OTV edge device receives a Layer 2 frame destined for a remote data center site, the frame is logically forwarded to the join interface.
- D. The OTV edge device performs the dynamic OTV encapsulation on the Layer 2 packet and sends it to the overlay interface toward the routed domain.

Correct Answer: AB

[351-080 PDF Dumps](#)

[351-080 Study Guide](#)

[351-080 Exam Questions](#)



To Read the [Whole Q&As](#), please purchase the [Complete Version](#) from [Our website](#).

Try our product !

100% Guaranteed Success

100% Money Back Guarantee

365 Days Free Update

Instant Download After Purchase

24x7 Customer Support

Average 99.9% Success Rate

More than 800,000 Satisfied Customers Worldwide

Multi-Platform capabilities - [Windows](#), [Mac](#), [Android](#), [iPhone](#), [iPod](#), [iPad](#), [Kindle](#)

We provide exam PDF and VCE of Cisco, Microsoft, IBM, CompTIA, Oracle and other IT Certifications.
You can view Vendor list of All Certification Exams offered:

<https://www.geekcert.com/allproducts>

Need Help

Please provide as much detail as possible so we can best assist you.

To update a previously submitted ticket:



 One Year Free Update Free update is available within One Year after your purchase. After One Year, you will get 50% discounts for updating. And we are proud to boast a 24/7 efficient Customer Support system via Email.	 Money Back Guarantee To ensure that you are spending on quality products, we provide 100% money back guarantee for 30 days from the date of purchase.	 Security & Privacy We respect customer privacy. We use McAfee's security service to provide you with utmost security for your personal information & peace of mind.
---	---	--

Any charges made through this site will appear as Global Simulators Limited.

All trademarks are the property of their respective owners.

Copyright © geekcert, All Rights Reserved.