



642-515^{Q&As}

Securing Networks with ASA Advanced

Pass Cisco 642-515 Exam with 100% Guarantee

Free Download Real Questions & Answers **PDF** and **VCE** file from:

<https://www.geekcert.com/642-515.html>

100% Passing Guarantee
100% Money Back Assurance

Following Questions and Answers are all new published by Cisco
Official Exam Center

- ⚙️ **Instant Download** After Purchase
- ⚙️ **100% Money Back** Guarantee
- ⚙️ **365 Days** Free Update
- ⚙️ **800,000+** Satisfied Customers





QUESTION 1

Which three statements correctly describe protocol inspection on the Cisco ASA adaptive security appliance? (Choose three.)

- A. The protocol inspection feature of the security appliance securely opens and closes negotiated ports and IP addresses for legitimate client-server connections through the security appliance.
- B. For the security appliance to inspect packets for signs of malicious application misuse, you must enable advanced (application layer) protocol inspection.
- C. If inspection for a protocol is not enabled, traffic for that protocol may be blocked.
- D. If you want to enable inspection globally for a protocol that is not inspected by default or if you want to globally disable inspection for a protocol, you can edit the default global policy.

Correct Answer: ACD

QUESTION 2

Which options can a clientless SSL VPN user access from a web browser without port forwarding, smart tunnels, or browser plug-ins?

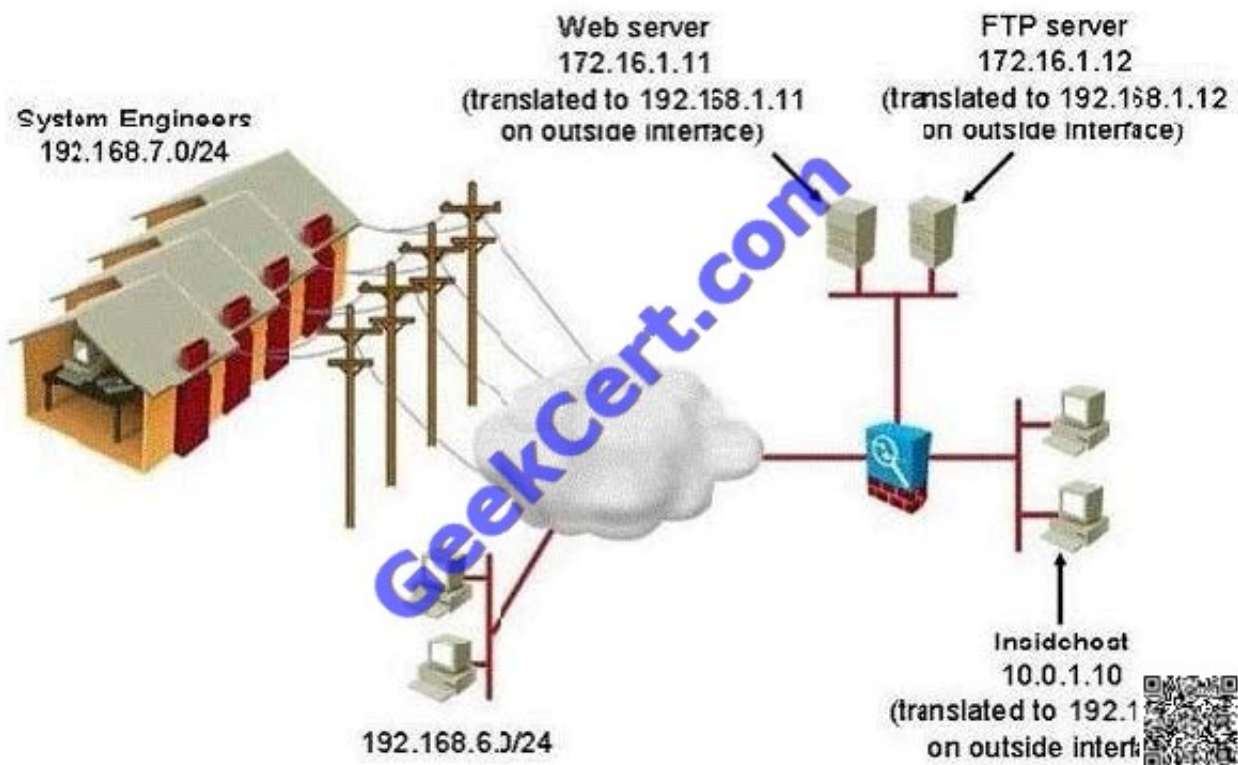
- A. web-enabled applications
- B. Microsoft Outlook Web Access
- C. files on the network, via FTP or the CIFS protocol
- D. internal websites

Correct Answer: ABCD

QUESTION 3

You work as a network security administrator for your company. Now, you are asked to configure the corporate Cisco ASA security appliance to take the following steps on its outside interface:

--rate limit all IP traffic from telecommuting system engineers to the inside host --drop all HTTP requests from the Internet to the web server that have a body length greater than 1000 bytes --prevent users on network 192.168.6.0/24 from using the FTP PUT command to store .exe files on the FTP server In order to achieve this objective, which set of Modular Policy Framework components will be included?



- A. one Layer 7 class map, one Layer 7 policy map, three Layer 3/4 class maps, one Layer 3/4 policy map
- B. two Layer 7 class maps, one Layer 7 policy map, three Layer 3/4 class maps, one Layer 3/4 policy map
- C. one Layer 7 class map, two Layer 7 policy maps, three Layer 3/4 class maps, one Layer 3/4 policy map
- D. three Layer 7 policy maps, one Layer 3/4 class map, one Layer 3/4 policy map

Correct Answer: C

QUESTION 4

Observe the exhibit carefully. You are asked to review the configuration of the clientless SSL VPN connection profile, which was created by a junior administrator. Which authentication method is configured in the clientless profile?



- A. The Cisco ASA security appliance requires AAA authenticate to the external AAA server LOCAL if the remote user does not have an identity certificate for authentication.

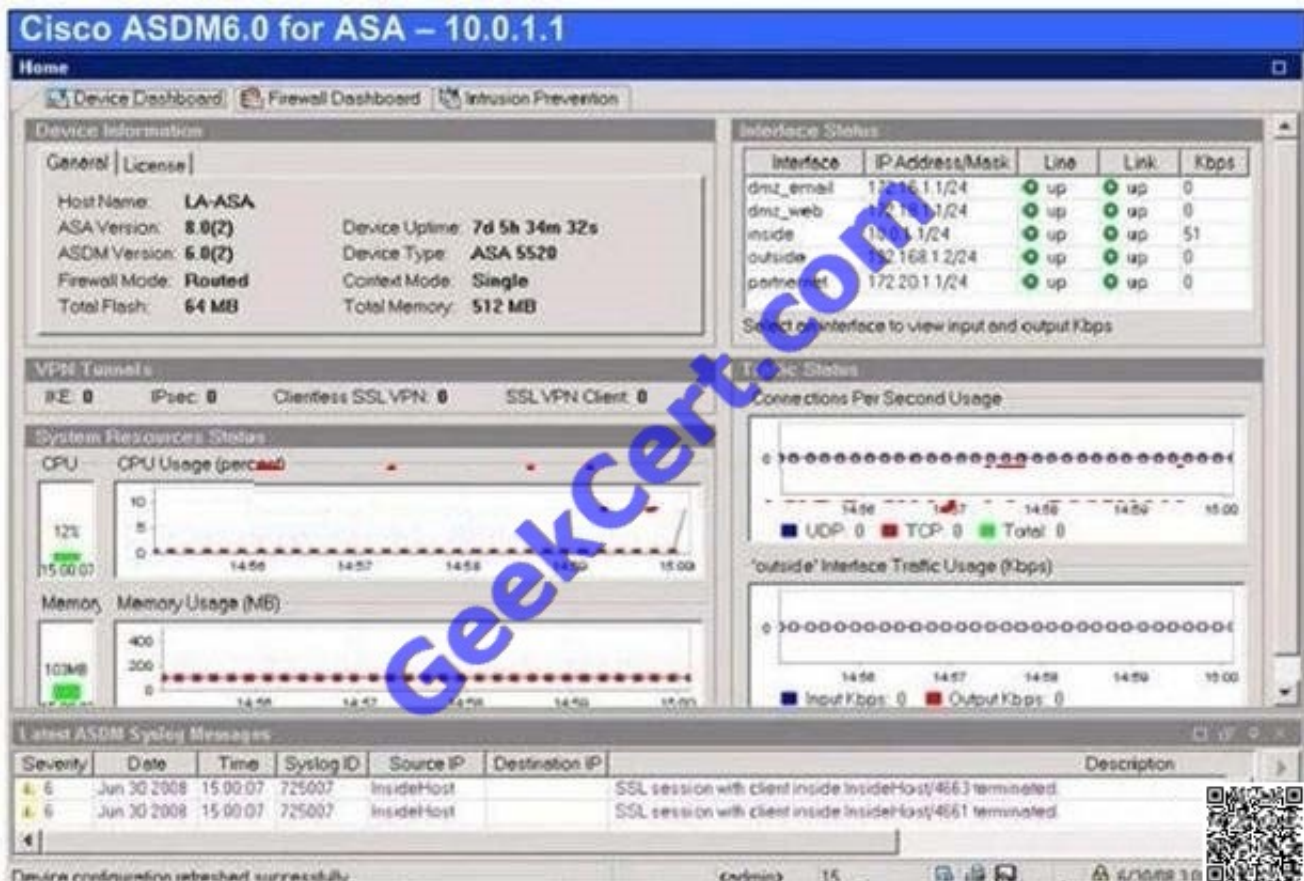


- B. The Cisco ASA security appliance requires a username and password if the remote user does not have an identity certificate for authentication.
- C. The Cisco ASA security appliance accepts an identity certificate or a username and password for authentication of remote users, but not both.
- D. The Cisco ASA security appliance requires both an identity certificate and username and password for authentication of remote users.

Correct Answer: D

QUESTION 5

Reverse route injection (RRI) is the ability for static routes to be automatically inserted into the routing process for those networks and hosts protected by a remote tunnel endpoint. These protected hosts and networks are known as remote proxy identities. Study the following exhibit carefully. What does Reverse Route Injection enable in this configuration?



- A. The Cisco ASA security appliance will advertise its default routes to the distant end of the site-to-site VPN tunnel.
- B. The Cisco ASA security appliance will advertise routes that are at the distant end of the site-to-site VPN tunnel.
- C. The Cisco ASA security appliance will advertise routes that are on its side of the site-to-site VPN tunnel to the distant end of the site-to-site VPN tunnel.
- D. The Cisco ASA security appliance will advertise routes from the dynamic routing protocol that is running on the Cisco ASA security appliance to the distant end of the site-to-site VPN tunnel.



Correct Answer: B

QUESTION 6

Study the following exhibit carefully. You have been tasked to administrate a new Cisco ASA security appliance with a Cisco ASA CSC-SSM. You are using the CSC Setup Wizard from within Cisco ASDM to configure the CSC-SSM for traffic selection. In the process of the configuration of traffic selection, the CSC Setup Wizard asks If CSC card fails and provides two options. What will each of these options do if chosen? (Choose two.)



- A. The Permit option allows traffic that is configured for CSC inspection to continue through the Cisco ASA security appliance, if the CSC card fails.
- B. The Close option allows traffic that is configured for CSC inspection to bypass the CSC if the CSC card fails.
- C. The Permit option allows the Cisco ASA security appliance to apply the CSC inspection configuration through the Cisco Modular Policy Framework, even if the CSC card fails.
- D. The Close option does not allow traffic that is configured for CSC inspection to continue when the CSC card fails.
- E. The Permit option allows traffic to continue to flow to the CSC for inspection, even when a hardware failure has been detected.
- F. The Close option does not allow any traffic that is traversing the Cisco ASA security appliance to continue when the CSC card fails.

Correct Answer: AD

QUESTION 7

Which two of these choices are types of queues available on the Cisco ASA security appliance when implementing QoS? (Choose two.)

- A. Weighted fair queue
- B. Last in first out queue



- C. Policing queue
- D. Low latency queue
- E. Custom queue
- F. Best effort queue
- G. Round robin queue

Correct Answer: DF

QUESTION 8

Refer to the following internal channels , which two can be used for communication between the Cisco ASA AIP-SSM and the Cisco ASA security appliance? (Choose two.)

- A. Control channel
- B. Promiscuous channel
- C. Inline channel
- D. Data channel
- E. Session channel
- F. Command channel

Correct Answer: AD

QUESTION 9

Recently, a branch office of your company has upgraded its network by changing the network topology of the branch, and the site-to-site VPN tunnel that runs between the branch and the corporate office has been reconfigured to perform Reverse Route Injection to accommodate the recent change. You are performing OSPF between the corporate Cisco ASA security appliance and routers on the internal network. Assume that the VPN configuration is correct, which step will be taken on the corporate Cisco ASA security appliance to make sure that these new routes are visible to internal routers running OSPF?

- A. Reverse Route Injection uses RIP, so you must add a RIP process and redistribute the learned RIP routes into OSPF.
- B. Reverse Route Injection requires that you configure a new OSPF process that will add these routes to the Cisco ASA security appliance routing table.
- C. Reverse Route Injection uses static routes, so you must configure OSPF to redistribute the static routes.
- D. Reverse Route Injection uses EIGRP, so you must add an EIGRP process and redistribute the learned EIGRP routes into OSPF.
- E. Reverse route injection requires that you add a static route for each branch-office network to the Cisco ASA security appliance routing table.



QUESTION 10

The screenshot displays the Mikrotik WinBox Firewall configuration interface, specifically the 'Configuration > Firewall > Objects > Regular Expressions' section. The interface is divided into three main panels:

- Regular Expressions:** This panel allows configuring regular expressions for use in pattern matching. It includes a table with columns 'Name' and 'Value'. The table contains three entries: 'WebServer1' with value 'example1.com', 'WebServer2' with value 'example2.com', and '_default_GoTo...' with value 'machinekey'. A fourth entry, '_default_GoTo...' with value '([A]erc[A]Poll', is highlighted. To the right of the table are buttons for 'Add', 'Edit', and 'Delete'.
- Regular Expression Classes:** This panel allows configuring regular expression classes using the regular expressions defined above. It includes a table with columns 'Name', 'Match Conditions', and 'Description'. The table contains one entry: 'WebServers' with match conditions 'WebServer2' and 'WebServer1'. To the right of the table are buttons for 'Add', 'Edit', and 'Delete'.
- Configuration > Firewall > Objects > Class Maps > HTTP:** This panel allows configuring HTTP class maps. It includes a table with columns 'Name', 'Match Conditions', and 'Value'. The table contains one entry: 'INBOUND_HTTP' with match conditions 'Request Method' and 'Request Header Field (host)'. To the right of the table are buttons for 'Add', 'Edit', and 'Delete'.

The 'Edit HTTP Inspect Map' dialog box is also visible, showing the 'Name' as 'HTTP_POLICY' and the 'Description' field. The 'Parameters' tab is selected, showing a table with columns 'Match Type', 'Criterion', 'Value', 'Action', and 'Log'. The table contains one entry: 'Class' with value 'INBOUND_HTTP', action 'Drop Connection', and log 'Yes'.

- A. Drops and logs HTTP request messages for which the request method is put or the request header host field contains either the string example1.com or the string example2.com
- B. Drops and logs HTTP request messages for which the request method is put and the request header host field contains either the string example1.com or the string example2.com
- C. Drops and logs HTTP request messages for which the request method is put and the request header host field contains the strings example1.com and example2.com
- D. Drops and logs HTTP request messages for which the request method is put or the request header host field



contains the strings example1.com and example2.com

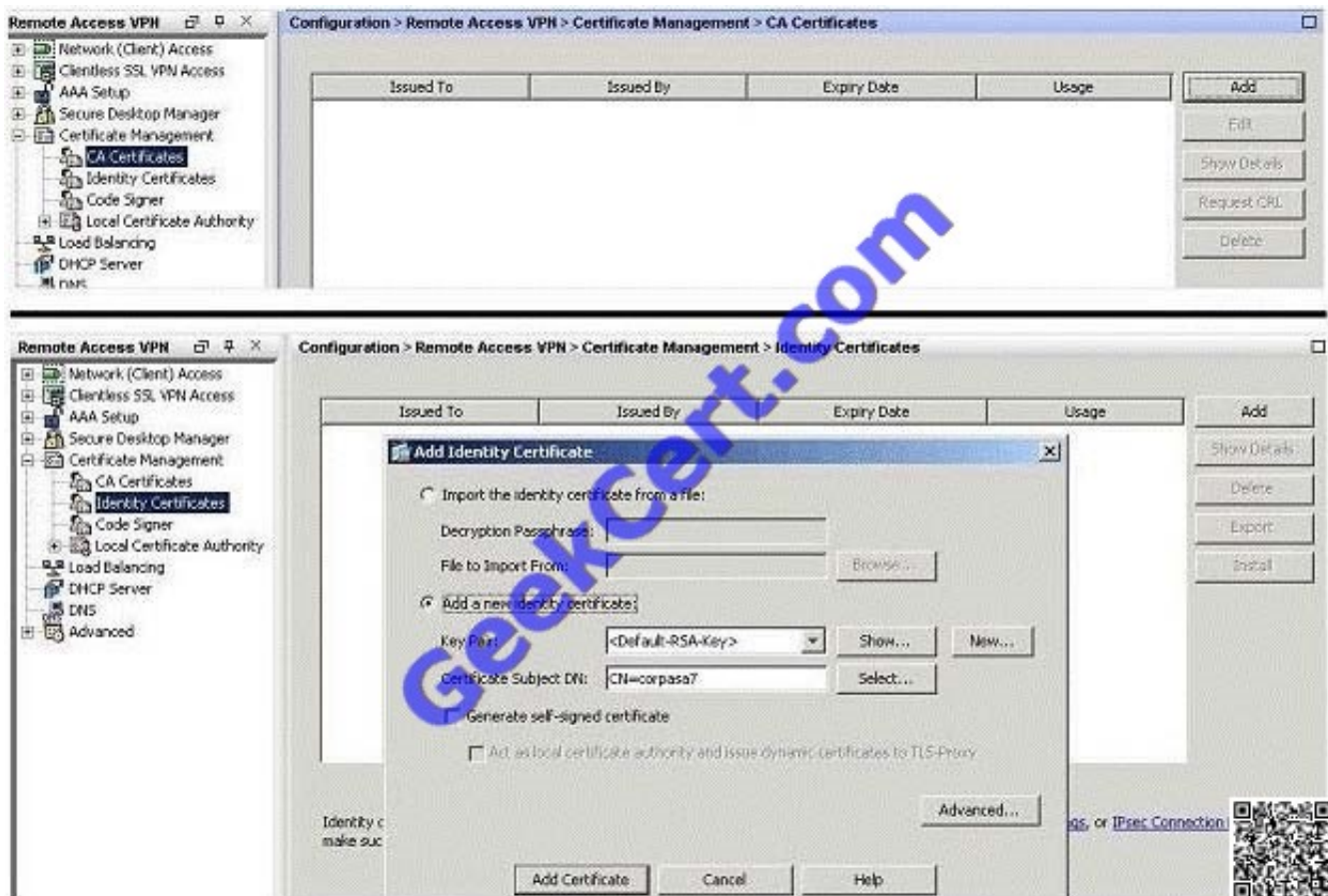
E. Drops HTTP request messages for which the request method is put, and logs HTTP request messages for which the request header host field contains either the string example1.com or the string example2.com

F. Logs HTTP request messages for which the request method is put, and drops HTTP request messages for which the request header host field contains either the string example1.com or the string example2.com

Correct Answer: B

QUESTION 11

You are a senior Cisco ASA security appliance administrator. Now, a new employee of your company asks you to help to configure a Cisco ASA security appliance for an identity certificate to be used for IPsec VPNs. Refer to the two Cisco ASDM configuration screens presented, which is a requirement for configuring the Cisco ASA security appliance for an identity certificate?



A. To retrieve an identity certificate, the Cisco ASA security appliance must have the certificate of the CA.

B. Because of the lack of a CA certificate, the administrator must import the identity certificate from a file.

C. To retrieve an identity certificate, the common name must be an FQDN.

D. The Cisco ASA security appliance doesn't need to retrieve an identity certificate. It can use a self-signed identity certificate for IPsec.



E. To retrieve an identity certificate, a new pair of RSA keys must be created.

Correct Answer: A

QUESTION 12

While using IPsec VPN tunnels, which primary benefit is provided by digital certificates?

- A. Scalability
- B. Obfuscation
- C. Resiliency
- D. Simplification

Correct Answer: A

QUESTION 13

As the administrator of a Cisco ASA security appliance, you have been tasked to configure SSL VPNs to require digital certificates.

Which four configuration options are available on the Cisco ASA security appliance for digital certificate management for SSL VPNs ? (Choose four.)

- A. The Cisco ASA security appliance can be configured to have a local CA that is subordinate to an external CA.
- B. The subordinate local CA on the Cisco ASA security appliance can issue certificates to users who require a certificate for their SSL VPN connections.
- C. The Cisco ASA security appliance can generate a self-signed certificate to be used as its identity certificate for SSL VPN connections.
- D. The Cisco ASA security appliance can be configured to retrieve its identity certificate from an external CA.
- E. The Cisco ASA security appliance can be configured as a standalone local CA.
- F. The local CA on the Cisco ASA security appliance can issue certificates to users who require certificates for SSL VPN connections.
- G. An external CA must be used for SSL VPN users who require certificates for their SSL VPN connections.
- H. The Cisco ASA security appliance must be configured to retrieve its identity certificate from an external CA.

Correct Answer: CDEF

QUESTION 14

Which two statements correctly describe the local user database in the security appliance? (Choose two.)



- A. You can create user accounts with or without passwords in the local database.
- B. You cannot use the local database for network access authentication.
- C. You can configure the security appliance to lock a user out after the user meets a configured maximum number of failed authentication attempts.
- D. The default privilege level for a new user is 15.

Correct Answer: AC

QUESTION 15

Cisco ASA 5500 Series Adaptive Security Appliances are easy-to-deploy solutions that integrate world-class firewall, Unified Communications (voice/video) security, SSL and IPsec VPN, intrusion prevention (IPS), and content security services in a flexible, modular product family. You are asked to configure a Cisco ASA 5505 Adaptive Security Appliance as an Easy VPN hardware client. In the process of configuration, you defined a list of backup servers for the security appliance to use. After several hours of being connected to the primary VPN server, the security appliance fails. You notice that your Easy VPN hardware client has now connected to a backup server that is not defined within the configuration of the client. Where did your Easy VPN hardware client get this backup server?

Configuration > Remote Access VPN > Easy VPN Remote

Configure this feature to enable the ASA to act as an Easy VPN Remote device. The ASA can then establish a VPN tunnel to a Cisco VPN 3000 Concentrator, IOS-based router, or firewall acting as an Easy VPN Server.

☒ Enable Easy VPN Remote

Mode

☒ Client mode ☐ Network extension mode

☐ Auto connect

Group Settings

☐ Pre-shared Key

Group Name:

Group Password: Confirm Password:

☒ X.509 Certificate

Select Certificate: ☐ Send certificate chain

To configure certificates, go to [Identity Certificates](#).

User Settings

Username:

User Password: Confirm Password:

Easy VPN Server To Be Added

Name or IP Address:

Add >>

<< Remove

Easy VPN Server(s)

192.168.8.2
192.168.28.2
192.168.48.2

Move Up

Move Down



- A. The backup servers that you listed were no longer available, so the Easy VPN hardware client used the list of backup servers that it retrieved from the primary server.
- B. The connection profile that was configured on the primary VPN server was pushed to your Easy VPN hardware client and overwrote the list of backup servers that you had configured.
- C. The backup servers that you listed were not configured as VPN servers, so the Easy VPN hardware client used the list of backup servers retrieved from the primary server.
- D. The group policy that was configured on the primary VPN server was pushed to your Easy VPN client and overwrote the list of backup servers that you had configured.

Correct Answer: D

[642-515 Practice Test](#)

[642-515 Study Guide](#)

[642-515 Braindumps](#)



To Read the [Whole Q&As](#), please purchase the [Complete Version](#) from [Our website](#).

Try our product !

100% Guaranteed Success

100% Money Back Guarantee

365 Days Free Update

Instant Download After Purchase

24x7 Customer Support

Average 99.9% Success Rate

More than 800,000 Satisfied Customers Worldwide

Multi-Platform capabilities - [Windows](#), [Mac](#), [Android](#), [iPhone](#), [iPod](#), [iPad](#), [Kindle](#)

We provide exam PDF and VCE of Cisco, Microsoft, IBM, CompTIA, Oracle and other IT Certifications. You can view Vendor list of All Certification Exams offered:

<https://www.geekcert.com/allproducts>

Need Help

Please provide as much detail as possible so we can best assist you.

To update a previously submitted ticket:



 One Year Free Update <p>Free update is available within One Year after your purchase. After One Year, you will get 50% discounts for updating. And we are proud to boast a 24/7 efficient Customer Support system via Email.</p>	 Money Back Guarantee <p>To ensure that you are spending on quality products, we provide 100% money back guarantee for 30 days from the date of purchase.</p>	 Security & Privacy <p>We respect customer privacy. We use McAfee's security service to provide you with utmost security for your personal information & peace of mind.</p>
---	---	--

Any charges made through this site will appear as Global Simulators Limited.

All trademarks are the property of their respective owners.

Copyright © geekcert, All Rights Reserved.